

ART 100 BOSTON offers affordable artwork in time for the holidays

BY MICHELE D. MANISCALCO

Approximately 500 people packed the Piano Craft Gallery at 793 Tremont Street on Friday night, December 2, to browse a diverse array of visual art, sip cocktails and meet the artists at the opening of the third annual ART 100 BOSTON, an exhibit and sale encompassing the works of over 60 artists, with



"Oops, I stepped on a piece of art!" by Remi Picó.
Photo by Michele Maniscalco

Continued on page 3

Thanksgiving at the Pine Street Inn



(Left) Guests are served a traditional Thanksgiving meal at Pine Street Inn. (Right) Pine Street Inn President Lyndia Downie looks on as Boston Police Commission Bill Evans, Senate President Stan Rosenberg and Mayor Marty Walsh carve turkeys. Pine Street Inn prepared and served close to 2,000 holiday meals.

Give A Little, Get A Little

A Special Holiday Shopping Event

SoWa Artists Guild members invite you to Give A Little, Get A Little, our special holiday shopping event on Thursday December 15, 4:00 PM - 8:00 PM at 450 Harrison Avenue in the SoWa Art and Design District.

Visit studios, meet the artists, discover unique and beautiful fine art paintings, sculpture, photography, handcrafted jewelry and loads more, perfect for your shopping list and available for purchase directly from the artists of SoWa Artists Guild.

When you shop, we give! SoWa Artists Guild will Give A Little, and donate 5% of your total purchases to our neighbor, The Pine Street Inn.

Shoppers will Get A Little, a 10% discount on all eligible purchases. Free admission and the event is open to the public.

MBTA Orange line to New England Medical Center or Silver Line to Union Park Street or East Berkeley Street. Parking is available. For more information please visit <http://sowaartists.com> and Give a Little, Get a Little

News from...

South End Business Alliance

Annual Meeting

Thursday, December 15th
10:00 - 11:00 a.m.
South End Buttery
314 Shawmut Ave., Boston, 02118

You are invited to attend the Annual Meeting of the South End Business Alliance. The Board will make brief comments on activities and initiatives, and coffee and pastries will be served.

South End Community Appreciation Night

Wednesday, December 14th
7:00 - 9:30 p.m.

Capital One Cafe invites you to an evening of celebration of the South End Community. Socialize and network with others in the community and meet our non-profit community partners in the South End (SEBA, More Than Words, Peter's Park, Animal Rescue League and ABCD). The event will be hosted in partnership with the Ink Block Apartments in their lobby community space. Enjoy complimentary local food and beverages. Must be 21 and older to attend. Registration is required and space is limited so an early registration is recommended.

<http://www.sebaboston.com>

ASK DOG LADY



Advice on Pets, Life, Love

BY MONICA COLLINS

"Ask Dog Lady" is not shy about dispensing advice for caring for our dogs. You ask like crazy, but, really, our dogs ask for nothing—except food, regular walks and old moldy tennis balls. In their simplicity, dogs leave so much to our imagination about how else we can pamper these beloved innocent animals.

The holidays provide the ideal excuse to bestow gifts—above and beyond the daily walk and bowl of

kibble. If Dog Lady could be Santa to dogs (and their humans), here are perfect presents—from the practical to whimsical—she would stuff down the chimney. What you will not find on this list are coats and clothes as Dog Lady is still an old-fashioned girl and believes all dogs— even those with short-haired coats—are happy nudists. If you have any question about your dog in the cold, make sure to ask your veterinarian:

- Fabulous Beds. Every dog has its day and its bed. Sure, an old blanket thrown on the floor will suffice but you should create a comfy niche for your pack animal. Well-behaved dogs need their space—as much as they want to share yours.

During this era of canine indulgence, every purveyor of pooch products sells dog beds but nobody does dog beds like Orvis, the country

Continued on page 4

Online

Follow us online!
twitter.com/SouthEndNews
facebook.com/SouthEndNews
mysouthend.com

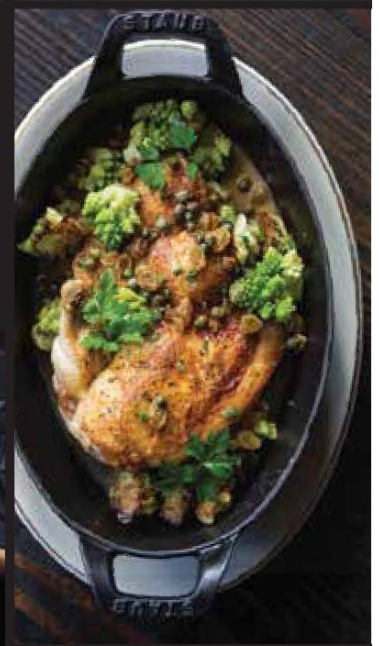
Online



9 of Boston's
Best Restaurants
1 Perfect Card



FREE \$20
Meal Certificate for every
\$100 in gift cards you buy*
*promo ends 12/31/16.
meal certificates valid 1/1/17 through 3/31/17



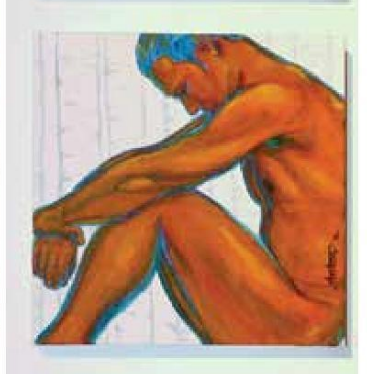
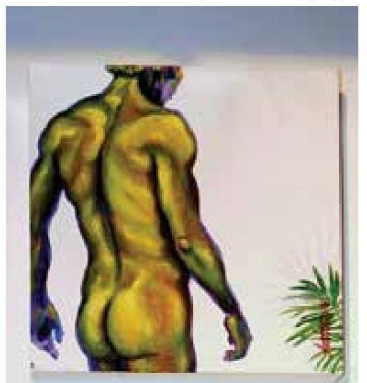
WWW.AQUITAINEGROUP.COM
Metropolis • Aquitaine Boston • Aquitaine Chestnut Hill • Aquitaine Dedham •
Cinquecento • Gaslight Boston • Gaslight Lynnfield • Greenlight Cafe • La Motta's

ART 100

Continued from page 1

each piece priced at \$100. According to Pares Mallis, gallery director and founder/curator of ART 100 BOSTON, 300 pieces were sold on opening night netting a total of approximately \$3,000. "I was very happy with the turnout on Friday night. There was a good crowd over the weekend, but I expected more than 20 visitors a day," Mallis said in a follow-up e-mail. Cocktails flowed courtesy of sponsor Bombay Sapphire Gin and co-sponsor Bark Thin provided chocolaty snacks.

In addition to the exhibiting artists and their friends and families, longtime residents of the Piano Factory including photographer and jazz musician Arni Cheatham, artist/illustrator and Piano Factory historian Thom Donovan and abstract painter James DeCrescentis mixed and mingled. Former resident David Mynott II offers a collection of delicate nature images in the show. Mallis envisioned ART 100 BOSTON as a win-win for artists and for art enthusiasts. "In 2014 I created ART 100 BOSTON as an alternative to the established art market. Concurrently, I felt it would address the artist's need to experiment with ideas, materials and styles without commercial pressure. Each of the works exhibited is priced at the symbolic value of \$100 during the exhibition to encourage art collection and to monetarily



Continued on page 5

(Top Left) Susan Kommit's "dust bunnies" (Top Center) Elizabeth Boates, center and her spaceships (Bottom Left) Works by Antoinette Marcoux (Bottom Center) Photographer Hank Hauptmann, right. Photos by Michele Maniscalco



OFFICE VISIT SPECIAL \$39⁹⁹

Now
OPEN 7 DAYS A WEEK

617-427-2210
www.bostonanimalhosp.com

For first time visit • expires 1/31/17



617-427-2220




617-427-2230

Your One-Stop Pet Center Conveniently Located
All Under One Big WOOF!
274 Southamptn St., Boston (South Bay area)

REAL ESTATE

in case of fire.....
Your association insurance won't cover your personal belongings



Condo owners need personal condominium insurance
Apartment renters need renters insurance
Make sure you're covered *when you need to be*

JJBodner

Insurance Agency of Boston
8 Clarendon St Boston, MA 02116 617-437-9400
www.jjbodner.com

CAN'T WAIT UNTIL THURSDAY FOR THE NEXT ISSUE OF THE SOUTH END NEWS? HEAD OVER TO MYSOUTHEND.COM

PARKER HILL APARTMENTS

The Style, Comfort and Convenience you Deserve!

- Heat and Hot water always included
- Modern laundry facilities
- Private balconies/some with city views
- Push wall to wall carpet
- Adjacent to New England Baptist Hospital
- Secured Entry
- Elevator Convenience
- Private Parking
- Near Public Transportation and much more...

1 Bedroom available for \$1,600

Call today for more details and to schedule a visit: 888-789-8813

ASK ABOUT OUR MOVE-IN SPECIAL & NO SECURITY DEPOSIT PROGRAM

Letters to the Editor

Location 101

Recently, a press release from Boston Parks & Recreation and the Mayor's Office of Neighborhood Services inviting the public to a meeting about improvements to Ramsay Park located in the South End. Constantly, as in city press release, Ramsay Park at Jim Rice Field is identified as being in Boston's South End, it is not.

Perhaps, the City of Boston has been misinformed because this park was dedicated to Capt. David L. Ramsay who came from Sterling Street which is now Melnea Cass Boulevard in Lower Roxbury.

Lower Roxbury often gets lost at City Hall. I grew up in this neighborhood and know it

well. It is not the South End and David L. Ramsay, a Vietnam War hero was killed in battle on August 17, 1970 was from Roxbury. The official address of the park is 1999 Ball Street another street that disappeared under the park.

Today, the zip code for my old neighborhood is 02118 a South End zip code but it is still Lower Roxbury even without being 02119. anymore.

I never knew Captain Ramsay a decorated USAF fighter pilot but I attended that dedication of this park back on November 20, 1999 because I was a Lower Roxbury person and came to honor his service and sacrifice

for his country.

It is well past time to correctly identify David L. Ramsay Park at Jim Rice Field as being in Lower Roxbury. It is also well past time for the City of Boston to recognize who Ramsay was and why he is honored in his hometown of Lower Roxbury.

How can the city rehab this park if they don't even know where it is located? I am proud of my Lower Roxbury roots in my old St. Philip's Parish.

I am also proud of Dave Ramsay, the man, a hero from Roxbury.

-Sal Giarratani

Dog Lady

Continued from page 1

lifestyle catalogue. Bolster, chew-resistant, therapeutic, monogrammed, nest, corner, and folding beds—Orvis' "The Dog Book" is full of luxe lounges in all sizes and colors.

Prices start at \$75 for small "Tough Chew" nests and go up to \$589 for extra-large memory foam loungers. Visit www.orvis.com or call 866-531-6188.

- **Bow (Wow) Clown Collar.** Your dog does not want to dress up as Santa, the elf or a reindeer for the holiday party. Dogs are miserable in funny hats and clothing. If you must dude up your darling, choose a holiday-colored collar because neckwear doesn't bother them. Your angel could be a harlequin in a stretchy elastic jester's collar with tiny bells. A neat red and green harlequin collar festooned with jingle bells is available at www.entirelypets.com for the sale price of \$3.99.

- **Classic Collar.** The real deal in dog collars is one embroidered with the dog's name and phone number so you can dispense with the jangling hard-to-read tags (of course, you can keep the license readily available). Dog Lady's dog wears a personalized collar and

his life has been saved because of it. Can't recommend these highly enough even though there are those who say a dog's name shouldn't be easily displayed. Still, when everybody knows your dog's name and number, your pet is a lot safer. Prices start at \$18.95 at www.dogidcollar.com.

- **Healthy Grub.** Poisoned pet food scares and regular recalls heighten awareness about dog food ingredients. Many of us don't want to serve the same old slop, which means boutique brands, such as Evanger's, have thrived. The Polka Dog Bakery, the best purveyor of pet products in the Boston area, carries Evanger's canned dinners, game meats and organic chicken. Polka Dog also carries Lotus canned, hand-packed dog stews.

Prices start at \$1.50 and change. Polka Dog Bakery's flagship store is in the South End at 256 Shawmut Avenue, Boston, 617-338-5155. Other locations are in Jamaica Plain, Chestnut Hill, Lynnfield; a new Polka Dog just opened in the North End at 61 Salem Street.

- **Cleanliness Is Next To Dogliness.** After a winter walk in snow and ice, wash off your dog's salty, dirty paws in tepid water one paw at a time. Keep an old pot filled by the door. Dry off darling with a highly absorbent

microfiber "dirty dog shammy" (\$14.99 at www.entirelypets.com).

- **Treat Di Tutti Treats.** Dog Lady's bribes of choice are freeze-dried liver chunks. Trainers propel these tidbits into the mouths of champions. This all-natural goody will coax your recalcitrant rover to sit up and pay attention. Dog Lady trained her puppy to go potty outside in a week with liver chunks. A bucket of them will last a long time, especially if you cut each chunk into tiny pieces. Stewart (used to be Gimboom) is the best known brand. These are pricey but worth the investment. Available widely at Petco, Petsmart, Amazon.com.

- **Accidents Will Happen.** When they mess – as they will because they're dogs not robots – you can clean up with Nature's Miracle, the enzymatic solvent that cleanses away all scents so they won't return to the scene of the crime. Nature's Miracle (Simple Solution is another brand name) is non-toxic, non-flammable, non-caustic and a "must" for wiping away bad memories in any pet home. Give yourself a gallon.

Visit askdoglady.com and read the new blogs, "Shorty Knows" and "The Dexter Diaries."

Toys for Children in Need

Coldwell Banker collecting toys

The Coldwell Banker Residential Brokerage offices in Boston's Back Bay, Beacon Hill and South End neighborhoods are collecting donations of toys and other gifts for The Home for Little Wanderers' Big Wishes Gift Drive. Big Wishes is one of the Boston area's oldest and largest toy drives, supporting children and families who are living in at-risk circumstances and are served by The Home's programs across Boston and Eastern Massachusetts.

Coldwell Banker Residential Brokerage encourages members of the community to drop off new unwrapped toys at the Coldwell Banker Residential Brokerage offices located at 137 Newbury St., Back Bay; 84 Chestnut

St., Beacon Hill; 505 Tremont St., South End (formerly Hammond Residential); and 633 Tremont St., South End. Coldwell Banker offices are accepting donations now through Tuesday, December 13, 2016.

"We are proud to continue this annual tradition during the season of giving. Our neighbors have generously donated toys and other gifts in the past, and we hope they will do so again this year. Their contributions will help bring holiday cheer to children and families that are facing difficult times," said Merit McIntyre, president of Coldwell Banker Residential Brokerage in New England. "We are so appreciative of any donations."

The Home needs gifts for children ranging in age from birth to 22-years, with an urgent need for gifts for the 14- to 18-year-old teenagers in its care. To help meet the chal-

lenge of providing suitable holiday gifts for the teens that The Home serves, Coldwell Banker Residential Brokerage also welcomes donations of gift cards from major retail stores, as well as online retailers, for personal care items, electronics, sporting goods and other items.

Additionally, Coldwell Banker Residential Brokerage is donating a \$60 gift card for every touchdown the Boston College Eagles scored during the 2016 football season to Big Wishes.

Every year, dozens of Coldwell Banker Residential Brokerage offices throughout Massachusetts collect donations for Big Wishes. The company's charitable foundation, Coldwell Banker Residential Brokerage Cares, has been a consistent supporter of The Home for

Continued on page 5

37 / 48

Publishers:

Jeff Coakley [ext. 202]
Sue O'Connell [ext. 215]

Editor-in-Chief:

Sue O'Connell [ext. 215]
sue.southendnews@gmail.com

Editorial Design Manager:

Daniel J. Raps
danielj.raps@gmail.com

Contributing Writers:

C.D. Hermelin
Michele D. Maniscalco
Jack Maypole, MD
Dog Lady

Display Advertising:

Jeff Coakley [ext. 202]
jcoakley@southendnews.com

Classified Advertising:

classifiedads@southendnews.com

Letters to the editor:

letters@southendnews.com

Calendar listings:

sencalendar@southendnews.com

© 2015 South End News Inc.

PO BOX E14,
Boston, MA 02127
(617) 464-7280; FAX (617) 464-7286

The South End News is a copyrighted publication. Any stories or photos contained herein may not be reproduced in whole or in part without the express written permission of the publisher. The South End News will not assume financial responsibility for typographical errors in advertisements. Questions or complaints regarding advertising must be sent in writing to the billing department within seven days of publication in order for adjustments to be made to the account. We reserve the right to use our discretion in accepting or rejecting advertising copy. South End News is not responsible for damages due to typographical errors, except for the cost of replacing ads that have typographical errors caused by our negligence. South End News is published every Thursday.

www.southendnews.com

[Facebook.com/SouthEndNews](https://www.facebook.com/SouthEndNews)



Letters policy

To be considered for publication, letters must be no longer than 500 words; refrain from extreme personal attacks; be signed and include an address and daytime telephone number. Writers should refrain from making incorrect statements since they may be barred from future issues. Deadline is noon Tuesday for Thursday's paper. To send us letters: Mail to 46 Plympton St., 5th floor, Boston, MA 02118; FAX to 617.464.7286; E-mail: letters@southendnews.com

LIQUOR LAND

BEST OF BOSTON WINNER

**FREE PARKING
LARGEST SELECTION
CASE DISCOUNTS**

**500 FEET FROM SOUTH BAY SHOPPING CENTER
1033 MASS. AVE., BOSTON • 617.445.0560**

It's Holiday Gift Giving Season!

**We have a Wonderful Holiday Selection of
Pre-Packaged Gift Sets**

SAMPLING OF

GIFT SETS

AND

SPECIALTY ITEMS

PATRON Anejo 750ml Cocktail Set
GREY GOOSE Vodka 750ml w/Glasses
REMY MARTIN V.S.O.P. 750ml w/Glasses
REMY MARTIN XO 750ml Gift Set
CHIVAS REGAL 12yr 750ml w/Glasses
JOHNNIE WALKER BLACK 750ml w/Glasses
JOHNNIE WALKER 200ml Sample 4/pk
ST GERMAINE 750ml w/Carafe
CROWN ROYAL 750ml w/Glasses
DALMORE 15yr 750ml w/Glasses
GLENLIVET 12yr 750ml Gift Set
BELVEDERE Vodka 750ml w/Glasses
JACK DANIELS 1.0L w/Bruin's Glasses
KNOB CREEK 9yr 750ml w/Glasses
BAILEY'S Irish Cream 750ml w/Glasses
PERRIER JOUET Belle Epoque 750ml w/Flutes
AMARETTO DI SARONNO Etro 750ml w/Glasses
HENNESSY VSOP and XO 750ml w/Glasses
COURVOISIER VS and VSOP 750ml w/Glasses
GRAND MARNIER 750ml w/Glasses

(all 750ml unless otherwise noted)

REMY MARTIN LOUIS XIII Cognac
GLENFIDDICH 19yr Age of Discovery and 21yr
MACALLAN Single Malt 25yr and Rare
CIROC X TEN Vodka 1.0L Bottle
PIERRE FERRAND Abel and Ancestrale
PATRON Burdeos and Platinum
HIGHLAND PARK Loki and Thor
MIDDLETON Very Rare and Barry Crocket
DEWARS SIGNATURE
JOHNNIE WALKER Blue, Platinum, Green and Gold
REMY MARTIN 1989 and Centaure
DON JULIO 1942
GLENLIVET 21yr and 25yr
GRAND MARNIER Centenaire, 1800 and Quintessence
HENNESSY 250TH CELEBRATION 1.0L Bottle

CHECK OUT OUR SHOWCASES CONTAINING OVER 250 ITEMS

SINGLE MALT SCOTCH	BLENDED SCOTCH
BOURBON	RYE
NEW AMERICAN WHISKEY	CANADIAN WHISKEY
IRISH WHISKEY	JAPANESE WHISKEY
COGNAC	RUM
MEZCAL	TEQUILA

We also have an extensive selection of Rums from the Carribean Islands, Central America, South America, and Cape Verde. Come and visit our Rum wall!

**GIFT BAGS AVAILABLE.
SHOP EARLY FOR
BEST SELECTION.**

Check out our Fantastic Christmas Specials in the next issue

Toys

Continued from page 4

Little Wanderers.

To learn more about how to help The Home this holiday season, including how to pledge a gift from a child's personal wish list or shop from a general list and have the gift delivered free of charge directly to The Home's Toy Room, please visit www.thehome.org/bigwishes.

ART 100

Continued from page 3

inspire the artist to continue to explore new concepts and mediums," Mallis explained.

The works on display and sale represent a wide array of media and moods. Eva Mallis exhibits colorful street-life photos and artist Kamal Sen, whose main focus is painting, said that architectural forms came to remind him of abstract painting, which led him to paint on top of photos of architectural structures. Fanciful works include Remi Picó's installation, "Oops! I stepped on a piece of art", a series of shoes with black and white geometric designs painted on the soles that is mounted directly on the wall; Anthony Astone's satirical shadow-boxes; Michael Cames's LPs painted with brightly colored, psychedelic designs and Antoinette Marcoux's quintet of copies of iconic works such as Vincent Van Cogh's self-portrait, Grant Wood's "American Gothic" and James MacNeill Whistler's "Arrangement in Grey and Black No. 1", popularly known as "Whistler's Mother", all with horse's heads. Elizabeth Boates offers a collection of colorful, miniature rocketships conceived while she was planning a birthday party for her son.

Sober and provocative works include a series of photographs of climatological phenomena such as floods and storm surges that artist Morel Orta describes as "threats to society. These things don't happen normally, but they are going to happen more in the future," he said. Hank Hauptmann, whose photographs of ordinary street scenes have unusual twists, will donate 75 per cent of the proceeds of his sale to the Standing Rock Sioux tribe. He said, "[The DAPL pipeline] was rejected by people who are living in Bismarck because it is unsafe so the Army Corps of Engineers moved it south, near the reservation. These people are fighting for something and they got rejected. Because winter's coming soon and they need supplies and money and I think they should get that." He continued, "But that's what my donation is about, that is not what my work is about. I'm a photographer, and a lot of these pictures were made over the course of 8 or 9 hours a day, and it can take 1,000 to 1,200 pictures to get one good one."

The exhibit and sale runs through December 17 with hours from 4:00-8:00 PM Tuesday through Friday and 12:00 noon-5:00 PM Saturdays and Sundays.

Get local and advertise your property in the *South End News*.

Call Jeff at (617) 464-7200 ext. 202 or email: sales@southendnews.com

Follow South End News on twitter
 go to twitter.com/SouthEndNews

South End News is now on facebook!

facebook.com/southendnews

Find us on Facebook

The Law Offices of Donald E. Green

EVERYONE IS GOING GREEN!

For all your legal needs, call The Law Offices of Donald E. Green.

We concentrate in **personal injury** matters as well as **criminal defense, civil rights, immigration matters, family/probate issues, bankruptcy, real estate and sexual harassment** claims.

Please call **Attorneys Don or Annette Green** at (617) 442-0050 or toll free at 1-877-DON-GREEN or email dgreen@donaldegreen.com or agreen@donaldegreen.com

Conveniently located on the South Shore and in Dudley Square:

- 500 North Main St, Unit B, Suite 2 in Randolph, MA 02368
- 2235 Washington Street in Roxbury (walk-ins welcome)

Home visits provided



DON GREEN

GO GREEN FOR
YOUR LEGAL
NEEDS!



ANNETTE HILL GREEN

PLAYFUL
CLOTHES AND
ACCESSORIES
FOR BABIES,
KIDS, AND
TWEENS

DESIGNERS HAND-SELECTED
FOR THEIR ETHICS AND
BUSINESS PRACTICES

NOW OPEN IN BOSTON AND ONLINE
579 TREMONT STREET, BOSTON, MA 02118
617.936.3808 | @KODOMOBOSTON
KODOMOBOSTON.COM

kodomo



Pet of the Week



Gleason

ANIMAL
RESCUE
LEAGUE
of BOSTON

Helping animals since 1979
10 Chandler Street
Boston, MA 02116

Gleason is a 2 year old pit bull mix looking for his forever family! He loves going on long walks, playing in the yard, and anything that keeps him moving! Gleason can get rambunctious at times, so a home with older children and/or just adults would be best. He's still a puppy in some ways, so obedience classes would be a plus. He also enjoys playing with some dogs but would need a companion that can keep up with him. Gleason is a playful, enthusiastic dog that will certainly keep up with any activity you throw at him. Come visit him at the center today! If you are interested in meeting Gleason, or any of the other animals currently residing at the Animal Rescue League of Boston, please contact us at 617.226.5602. The shelter is open Tuesday through Thursday 1-7pm & Friday through Sunday 1-4pm, excluding some holidays.

Also, be sure to check out our:
WEBSITE: www.arlboston.org
BLOG: arlbostonblog.wordpress.com
TWITTER: @ARLBostonRescue
FACEBOOK: [facebook.com/AnimalRescueLeagueofBoston](https://www.facebook.com/AnimalRescueLeagueofBoston)

SCT
STEVEN
COHEN
TEAM
SOUTH END
REAL ESTATE
SPECIALISTS



Steven Cohen
Pet of the Week
Series Sponsor

NOW TWO LOCATIONS

House of Siam

Open for Lunch & Dinner
Come Experience our Beautiful Dining Room and the
Freshest Thai Cuisine in Boston

592 Tremont Street (near Dartmouth Street)
Take out is available from 11:30 a.m. to 11:00 p.m. daily

617.267.7426

542 Columbus Avenue

617.267.1755

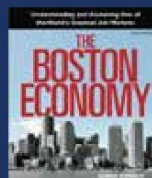


Cambridge
College



Understanding and Accessing One of the World's
Greatest Job Markets

with
George Donnelly, author of
The Boston Economy



Book Signing and Discussion

Thursday, December 15, 2016
6:00 pm – 7:30 pm

1000 Massachusetts Avenue Gallery
Room 152 Cambridge, MA

Join us for a discussion and book-signing with author George Donnelly on Boston's thriving economy and the emerging career opportunities available to graduating students. "The Boston Economy" is a local roadmap to help students understand the full scope of the opportunities available in one of the world's greatest economies.

George Donnelly has 30 years of experience as journalist in the Boston area, most recently as editor-in-chief at the Boston Business Journal. He is Vice President at Northwind Strategies where he brings his extensive knowledge of media and communications strategy.

Space is limited!

RSVP to Alexa.Shola@cambridgecollege.edu

For inquiries please contact the Office of Public Relations at 617.873.0621

This complimentary event is sponsored by the Office of the President.



cambridgecollege.edu
1.800.877.4723

#CCTalks
#mylifemycollege

SERVICE GUIDE

PLUMBING • HEATING • HVAC

S.G. Harold Plumbing, Heating & AC

Specializing in Viessman Boiler
Home Heating Repairs & Service
Unico Air Conditioning • Radiant Floor Heating

Boston 617-522-1000
Unprecedented Service Tailored To You
MA Lic # 10589

CLEANING SERVICES



Greater Boston Area
Spring Cleaning
For All Seasons

- Trustworthy cleaning services to meet your needs
- Houses, apartments and commercial
- Schedule that works best for you, weekly, bi-weekly, or monthly
- All routine housework, plus special clean-up jobs
- Owner supervised cleaning crew and ensures quality
- Excellent references and competitive rates

Cleaning by Judy 617-501-9645

V.I.P. CLEANING SERVICES

RESIDENTIAL & COMMERCIAL
(houses • apartments • offices • stores • clinics • buildings • etc)
• POST-CONSTRUCTION • POST-PARTY
• MOVE-INS / MOVE-OUTS
• WEEKLY, BI-WEEKLY, MONTHLY, ONE-TIME
• GOOD REFERENCES AND RATES
• 15 YEARS OF EXPERIENCE
PLUS: PAINTING SERVICES

Alex Hipolito: 617 309 0261

ROOFING

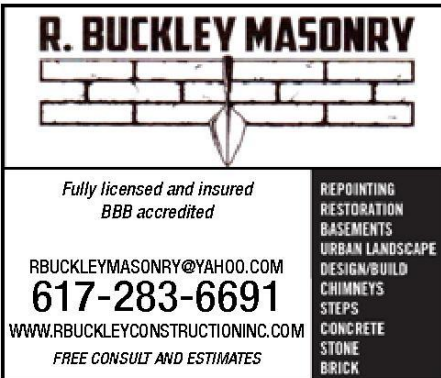


McDonnell Roofing Co.
Roofing Specialist

Fully Insured
Slate and Copper Work - Rubber Roof Systems
Shingles and Gutters - Repairs - Lic. Contractor Reg. #100100

617-288-3448
Free Estimates • Over 40 years of experience
McDonnellRoofingBoston.com

Masonry



R. BUCKLEY MASONRY

*Fully licensed and insured
BBB accredited*

REPOINTING
RESTORATION
BASEMENTS
URBAN LANDSCAPE
DESIGN/BUILD
CHIMNEYS
STEPS
CONCRETE
STONE
BRICK

RBUCKLEYMASONRY@YAHOO.COM
617-283-6691
WWW.RBUCKLEYCONSTRUCTIONINC.COM
FREE CONSULT AND ESTIMATES

BRUNO GUERRIERO CONSTRUCTION, INC.

Water Proofing Solutions
Basements • Facades • Chimneys



Emergency Repairs
Roofs & Walls • Clean Outs

COMPLETE MASON CONTRACTOR
Custom Brick, Stone Work & Brick Pavers
ALL TYPES OF REPAIRS AND RESTORATIONS

Flood Damage Repair • Brownstone Repair • Stairs Restored • Foundations

BrunoGuerrieroConstruction.com • Brunosworld@comcast.net

MENTION THIS AD, GET 10% OFF

HIC
REG#
268196

FULLY INSURED

(800) 444-5476

FREE ESTIMATES



MASONRY



P. Stones Contracting, Inc.

Specializing in Historic Restoration,
Brick Repointing, Brick, Block, Stone,
Basement Floors, Caulking & Waterproofing.

Ornamental window sills, window headers and moldings.

Fully licensed and insured. 15 years of satisfied customers and referrals.

Office: 781-848-6922 • Fax: 781-848-6923

Cell: 617-592-0850 • pstonescontracting@hotmail.com

CONSTRUCTION • GENERAL • REMODELING

The Dependable Handyperson

FINE PAINTING AND REFINISHING
SMALL REPAIRS AND RENOVATIONS
DECK AND GARDEN WORK

Call Jean at 617-236-1795
dependablehandy@aol.com

PRECISION WOODWORKING & GENERAL CONTRACTING

Commercial and Residential Builders

KITCHENS • BATHROOMS • ROOFING • DECKING • PAINTING
MASONRY • TILING • WINDOWS & DOORS • BUILDING RESTORATION
Finish Carpentry • Historic Windows • Slate and Copper Work

20 Years experience in the South End • Licensed & Insured
John O'Shea: 617-590-6650

WALDRON CONTRACTING SERVICES, INC.

ROOFING • SHINGLES • SLATE • COPPER
MASONRY • BRICK POINTING • HISTORICAL RESTORATION
COMPLETE BUILDING ENVELOPE REPAIR



PLEASE CALL MARK
OFFICE: 781-963-4300
CELL: 617-699-7922
FREE ESTIMATES • FULLY INSURED
LICENSE
#CS89674
LICENSE
#HIC 13872

MASONRY

Rynne Masonry, Inc

20 Years of Experience Working with Clients in the South End
Specializing in all types of Brownstone Restoration

Brickwork • Repointing
Step Repair (Rebuild, Restore and Resurface)
Chimney Repair • Basement Flood Repairs

Fully Insured and licensed. Please call for references and work samples.
Francis Rynne 617-510-2775 or 617-783-0516

ELECTRICAL



D'S ELECTRIC

PROVIDING QUALITY
ELECTRICAL SERVICES
to the BOSTON AREA

Residential & Commercial
Free Estimates
24 Hour Service

Dedicated to Customer Service Since 1971

617.542.2000
www.ds-electric.com

Mass Licence #14580A

South End News

Service Guide Ads Get Results.

617.464.7280 • sales@southendnews.com



THE TAKE
WITH SUE O'CONNELL

SHE HAS A LOT TO SAY...
SO DO HER GUESTS

WEEKDAYS AT 6PM
nech



WE NEVER WANT ANOTHER FIRE
SO WE WENT SMOKE-FREE.

Justin
—Cruz Management Corporation

Go smoke-free
www.BostonSmokeFreeHomes.org


Building a Healthy Boston
Mayor Martin J. Walsh

Boston REACH: Partners In Health and Housing & Let's Get Healthy, Boston!
Made possible by funding from the Centers for Disease Control and Prevention