

## CDC Approves BSL-4 Labs at Biolab

Submitted by  
Community  
Relations for the BU  
Medical Campus

On Monday, December 20, 2016, the Centers for Disease Control and Prevention (CDC) approved

Boston University's application to operate the Biosafety Level 4 (BSL-4) laboratories at the NEIDL. This approval comes after a rigorous two-year review by the CDC of the University's application, submitted in September 2014, to activate its state-of-the-art BSL-4 research space.

The University is now awaiting

approval from the Boston Public Health Commission (BPHC) for its BSL-4 laboratory permit application, which was submitted in October 2015 and is currently still under review.

Continued on page 2

## New Year at Cathedral

Cardinal O'Malley rang in the new year celebrating Mass for Boston's Haitian community on Sunday,

January 1. New Year's Day is also Haitian Independence Day.

More Photos on page 6



Photo by Patrick O'Connor

## Capt. Ivens last Roll Call

SUBMITTED BY BPD

On, December 31, 2016 at 4:00 PM, retiring Captain Paul Ivens led the final roll call of his career at District D-4 (South End). In addition to the first half shift officers, also in attendance were Police Commissioner William Evans, Captain Ivens' wife and family, and dozens of officers who had the privilege of



Captain Ivens' (in red), Commissioner Evans (in blue) and the first half shift officers

Continued on page 2

## ASK DOG LADY



### Advice on Pets, Life, Love

BY MONICA COLLINS

Dear Dog Lady,

I've heard Donald Trump does not have a dog. He's the first president in my memory not to have a pet. I also hear he doesn't like dogs.

I further understand, much to my horror, that he's appointed a man to be the Agriculture Secretary who believes in farming animals and is a defender of puppy mills. What's your advice about how to keep our dogs safe during a Trump administration?

—Geraldo

Dear Geraldo,

Don't feel helpless and hopeless. Give to an organization fighting puppy mills—to wit, any animal welfare organization such as the MSPCA, the Animal Rescue League or the Humane Society of the United States. Grab your doggies and hold them close. Stay sealed into liberal Massachusetts, which just voted overwhelmingly for a farm animal welfare proposition.

Geez, what can "Ask Dog Lady" say about this revolvin' development except to try and keep a sense of humor about everything,

although it's so difficult. The Trump minions have much bigger fish to fry than animal issues, although you never know what the man will do from one moment to the next. This is one incoming president whose empathic response could be helped by the company of a pet.

Dear Dog Lady,

I have a one-year-old Shipoo. Normally, she is a loving, goofy, puppy. But when you give her a certain kind of bone and you try to go near her, she growls and will show her teeth. Last night, I tried moving her while she had her bone and she bit me and broke the skin. As soon as the bone is removed, she is back to her old self.

—Mary

Continued on page 2

## Warm Up with SEBA & Commerce Bank

Commerce Bank is the Platinum Sponsor of the "Warm in the Winter" business expo presented by the South End Business Alliance (SEBA), which will be held on Saturday, February 4 from 12:30 p.m. to 6:30 p.m. at the Boston Center for the Arts Cyclorama at 539 Tremont Street in Boston. Pictured

at \$1,000 check for the expo are, from left: Brendan Ahern, Assistant Vice President and Manager of Commerce Bank's South End office and SEBA secretary; SEBA President Eve Ward; and SEBA board member Kristi Keefe.

"Warm in the Winter" will

Continued on page 5



## Recycle Your Christmas Trees, Catalogs and Wrapping Paper

Boston residents can place their Christmas trees curbside for composting January 13th.

Please remove ornaments, decorations, and stands from Christmas trees. Do not put trees in plastic bags.

Place trees at the curb by 7:00 am on recycling collection day. Christmas trees will be recycled during these two weeks only. If you have two recycling days per week, Christmas trees will be collected on your first recycling day of the week. Residents are also

reminded to recycle their holiday and wrapping paper. For more information please visit <https://www.boston.gov/trash-and-recycling-guide>



**Biolab**

*Continued from page 1*

Boston University will continue to make every effort to keep you and the community updated as the NEIDL moves forward with

the BSL-4 research approval process. Providing regular updates to the public and elected officials, and community leaders on the permitting process and operations of the NEIDL has been – and will continue to be – Boston University’s continuous practice.

**Ivens**

*Continued from page 1*

working with the Captain over his 37 year career. Among many notable assignments, the Captain spent time in the Explosive Ordinance Unit and was the commander at the

Marathon Finish Line in 2013. Yesterday in front of a packed house, he had the honor of calling his daughter’s name, as she just graduated with the last class from the Boston Police Academy and is currently assigned at District D-4. To Captain Ivens, we say, “Thank you for your dedicated service to the City of Boston,

**Dog Lady**

*Continued from page 1*

Dear Mary,

*It doesn't matter whether a dog is a cute Shih-poo (Shih Tzu/poodle mix) or a large Akita, the dog's primordial instincts can flare in an instant when protecting food.*

*Please don't make light of the bite. Whenever our dogs draw blood, the situation is serious and the need for training becomes urgent. You have to live with your puppy for many years to come. You should never feel intimidated or fearful of this hairy heap – as cute as she may be. Tell your veterinarian what happened and ask him or her for a reference to a trainer. Your dog is “food aggressive” and professional training could benefit both of you.*

*Whatever you do, you have to always let her know who's in charge. When you give her regular meals, hand out the kibble and canned meat in controlled dollups. Make her sit, stay and focus on you before she gets anything.*

Dear Dog Lady,

I have a pug (one year, four months) named Clara. I enjoy walking her and having one-on-one time with her. But I'm not a sit-and-pose kind of guy who enjoys the doggie park scene. We share quality time together walking, playing and occasionally seeing other pugs. The problem is that I have a friend who has Clara on the weekends and he is more into the park scene. I feel like I'm being judged for not taking Clara to the doggy group.

—Clara’s Daddy

Dear Clara’s Daddy,

*Do not worry what others think of you because your pug certainly doesn't care. She's not into "scenes." If anyone asks again why you avoid the park, assure the snoopy one that you and Clara create magic together.*

*Visit askdoglady.com and read the new blogs, "Shorty Knows" and "Dex and the City."*

**Bridging the food gap**

**BPHC Partners with Community Health Centers and Non-Profits to Increase Food Access for Residents**

**SUBMITTED BY THE BOSTON PUBLIC HEALTH COMMISSION**

The Boston Public Health Commission (BPHC) today announced community health center and food organization collaborations that will help bring healthy food to communities that need it the most.

BPHC will award \$120,000 in grant funding to four community health centers that will work directly with non-profits to increase food access by scaling up programs at health centers near public housing developments and connecting public housing residents with information on where to find affordable and nutritious food.

"Food insecurity is a real threat to many Boston families. With the holidays right around the corner, many of us are thinking about how to give back and to support the most vulnerable members of our community," said Monica Valdes Lupi, JD, MPH. "We're grateful to be partnering with community health centers to support these non-profits who work in that spirit year round, increasing access to nutritious foods to help residents thrive in all aspects of their lives."

In 2013 and 2015, public and rental assisted housing residents were nearly three times more likely than other Boston residents to report that they were hungry but did not eat because they could not afford

enough food, according to the Boston Behavioral Risk Factor Surveillance Survey, a biennial telephone survey administered by the Boston Public Health Commission to Boston residents.

Each of the community health centers funded by this grant has committed to introducing screening for food insecurity and to beginning a program of referrals for food resources located in the patient's community.

The Fresh Truck, a non-profit mobile fruit and vegetable market was awarded \$10,000 for operational costs associated with expanding their food offerings. The Fresh Truck reaches neighborhoods with limited access to affordable and healthy foods. The grant will make it possible to offer additional foods including milk, meats and fish to their offerings and to operate year round.

The work to increase access to healthy foods builds on existing partnerships between BPHC and the South End Community Health Center, the Southern Jamaica Plain Health Center, the Upham's Corner Health Center, and Whittier Street Health Center. With this partnership, the community health centers have already seen measurable success at reaching populations that are vulnerable to the threat of food insecurity.

Upham's Corner Health Center in Dorchester has integrated food insecurity screenings and referrals into its social services department to better connect its patients with food resources, including Fair Foods.

Southern Jamaica Plain Health Center has created a video with youth from South Street Housing Development that addresses residents' challenges with accessing healthy and affordable food and highlights

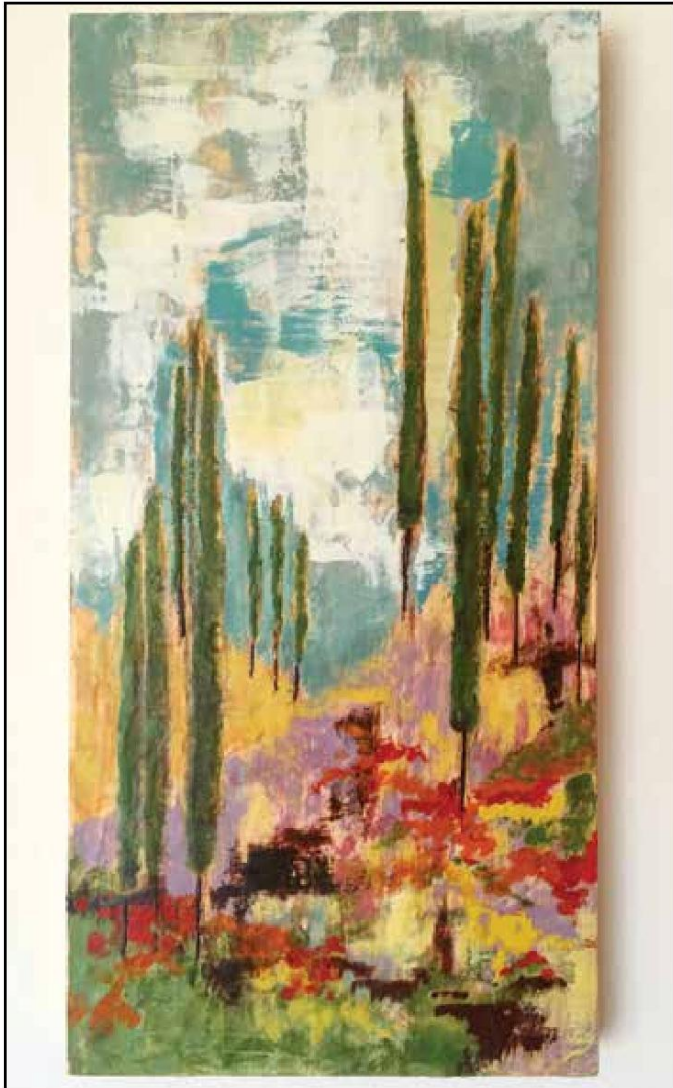
*Continued on page 3*

# SoWa First Friday

January 6, 5-9 pm.

At the center of the SoWa Arts District, meet artists in their studios and experience a wide variety of contemporary art. Over 70 artists' studios open to the public. Free and

open to the public. MBTA Orange line to New England Medical Center, Silver line to Union Park Street or East Berkeley Street. Parking is available. For more information, please visit <http://www.sowaartists.com> and <http://facebook.com/SoWaArtistsGuild>.



Cypress 2, by SoWa Artists Guild member Patricia Busso

## Food

Continued from page 2

some of the strategies the residents employ. The video will be used to educate health center staff on the issue as they integrate food insecurity screening and referral into their system.

Whittier Street Health Center in Roxbury involved youth from nearby housing developments in a health and job readiness program that included working in the health center's garden. The participating youth were able to share the garden produce with their families.

With the receipt of a parking waiver from the Boston Transportation Department, the South End Community Health Center was able to bring the Fresh Truck to the health center, benefiting residents of the many surrounding public housing developments, other patients and neighbors. With the service expanded from two hours a month to twelve, residents were able to purchase nearly five times more produce, making it the most trafficked Boston location.

"It's very important for us to work with our patients to not only address medical issues, but also social determinants of health," said South End Community Health Center Chief Operations Officer Karen van Unen. "The Fresh Truck is a key component to help our patients access healthy eating and healthy foods."

# BPD Seeking Public's Help

## Can you ID Person of Interest Wanted in Connection to Package Theft in Dorchester

SUBMITTED BY BOSTON POLICE

BPD Seeking Public's Help in Effort to ID Person of Interest Wanted in Connection to Package Theft in Dorchester: Detectives from District C-11 (Dorchester) are asking for your help in efforts to identify the individual pictured in relation to a package stolen in the area of Harborview Street on December 7, 2016 at about 1:00pm.

The Boston Police Department is actively reviewing the facts and circumstances surrounding this incident. Anyone with information related to this incident is asked to call detectives assigned to District C-11 at (617) 343-4335.

Community members wishing to assist this investigation anonymously can do so by calling the CrimeStoppers Tip Line at 1 (800) 494-TIPS or by texting the word 'TIP' to CRIME (27463). The Boston Police Department will stringently guard and protect the identities of all those who wish to help



Photo courtesy BPD

this investigation in an anonymous manner. The men and women of the Boston Police Department are on call 24/7/365.

## Pet of the Week

**Hammer**

**ANIMAL RESCUE LEAGUE of BOSTON**

Helping animals since 1999

10 Chandler Street  
Boston, MA 02116

Meet **Hammer**, a 3 year old plott hound mix, who is a sweet and playful boy that loves being outside. **Hammer** cannot see very well, so he would do best in a quiet home with adults and probably no other pets. **Hammer** loves being around people and tries to jump into any lap that he can find. **Hammer** may also need regular veterinary treatment throughout his life. **Hammer** will need regular eye check-ups and could receive surgery to correct his vision. The shelter budget does not allow such a costly procedure, and this is a lot to ask of a potential adopter. If you are interested in meeting **Hammer**, or any of the other animals currently residing at the Animal Rescue League of Boston, please contact us at 617.226.5602. The shelter is open Tuesday through Thursday 1-7pm & Friday through Sunday 1-4pm, excluding some holidays.

Also, be sure to check out our:  
**WEBSITE:** [www.arlboston.org](http://www.arlboston.org)  
**BLOG:** [arlbostonblog.wordpress.com](http://arlbostonblog.wordpress.com)  
**TWITTER:** [@ARLBostonRescue](https://twitter.com/ARLBostonRescue)  
**FACEBOOK:** [facebook.com/AnimalRescueLeagueofBoston](https://facebook.com/AnimalRescueLeagueofBoston)

**STEVEN COHEN**  
TEAM  
SOUTH END  
REAL ESTATE  
SPECIALISTS

**Steven Cohen**  
Pet of the Week  
Series Sponsor

**NOW TWO LOCATIONS**

# House of Siam

Open for Lunch & Dinner  
Come Experience our Beautiful Dining Room and the  
Freshest Thai Cuisine in Boston

**592 Tremont Street (near Dartmouth Street)**  
Take out is available from 11:30 a.m. to 11:00 p.m. daily  
**617.267.7426**

**542 Columbus Avenue**  
**617.267.1755**

# The Year in Review

## Blackstone/Franklin Square Neighborhood Association

**SUBMITTED BY ERIC HUANG**  
PRESIDENT, BLACKSTONE/FRANKLIN SQUARE  
NEIGHBORHOOD ASSOCIATION

As 2016 draws to a close, we'd like to take a look back at all the exciting things that have happened throughout the year. At our annual Heart of Gold scholarship fundraiser in February, we raised enough money to award \$19,000 in college scholarships to ten of the South End's best and brightest graduating high school seniors.

We hosted the Halloween Festival in Blackstone Square, bringing together over 500 humans and dogs from the community for a day of pumpkin decorating, spooky music and storytelling, ice cream and face painting, and even a dog costume contest!

In December, we held our annual Christmas Tree Sale and Holiday Event. Santa was a big hit with the kids!

This year our neighborhood was abuzz with plans to redevelop dormant spaces and build entirely new ones. We reviewed each project to ensure it would positively impact and enhance the neighborhood. Highlights include redevelopment of Immaculate Conception Church as apartments, redevelopment of 46 Wareham as a mixed-use project, and the proposal for hundreds of apartments at Harrison Albany Block.

We were also pleased to enthusiastically support new businesses coming to Washington Street, including Anoush'ella, a fine casual Mediterranean restaurant, and BARRE3, a fitness studio.

We held numerous catered social events at Estragon and Elephant Walk for neighbors to enjoy each other's company.

We have been vigilant with public safety



Scholarship recipients at Heart of Gold fundraiser.

issues. Last December, we launched the effort that resulted in a South End-wide community meeting to express concerns about increased gun violence in the neighborhood, which led to focused police attention to area hot spots. In collaboration with IBA and St. Stephen's Church, we launched the Friends of O'Day Park, whose mission is to bring positive activity to a known problem area.

We provided input on numerous quality of life issues, including the impact of the opioid epidemic on our neighborhood. We vetted a proposal for a medical marijuana dispensary in the neighborhood, which was ultimately scrapped.

Last winter, we collaborated with Washington Gateway Main Street to bring a whimsical art and light installation to the parks. (Stay tuned for a new winter light installation coming soon!)

The Friends of Blackstone & Frank-

lin Squares held numerous park cleanups throughout the year and teamed with local businesses, including Endurance Pilates, Public Body, and Jenny Leopold, to bring fitness activities to Franklin Square.

The Friends also welcomed EMERGENCE: What Does Hope Look Like?, a colorful sculpture by local artist Chanel Thevil, to Franklin Square.

What a year it has been! All of this would not be possible without the help of our tireless board, generous volunteers from the neighborhood, and your financial support.

We depend on contributions from folks like you to support our work. Please consider supporting us as you think about your end-of-year giving. We are a 501(c)(3) organization and all donations are tax deductible.

Cheers to our lovely neighborhood and kind neighbors. Happy New Year!

**Publishers:**  
Jeff Coakley [ext. 202]  
Sue O'Connell [ext. 215]

**Editor-in-Chief:**  
Sue O'Connell [ext. 215]  
sue.southendnews@gmail.com

**Editorial Design Manager:**  
Daniel J. Raps  
danielj.raps@gmail.com

**Contributing Writers:**  
C.D. Hermelin  
Michele D. Maniscalco  
Jack Maypole, MD  
Dog Lady

**Display Advertising:**  
Jeff Coakley [ext. 202]  
jcoakley@southendnews.com

**Classified Advertising:**  
classifiedads@southendnews.com

**Letters to the editor:**  
letters@southendnews.com

**Calendar listings:**  
sencalendar@southendnews.com

© 2017 South End News Inc.  
PO BOX E14,  
Boston, MA 02127  
(617) 464-7280; FAX (617) 464-7286

The South End News is a copyrighted publication. Any stories or photos contained herein may not be reproduced in whole or in part without the express written permission of the publisher. The South End News will not assume financial responsibility for typographical errors in advertisements. Questions or complaints regarding advertising must be sent in writing to the billing department within seven days of publication in order for adjustments to be made to the account. We reserve the right to use our discretion in accepting or rejecting advertising copy. South End News is not responsible for damages due to typographical errors, except for the cost of replacing ads that have typographical errors caused by our negligence. South End News is published every Thursday.

[www.southendnews.com](http://www.southendnews.com)  
[Facebook.com/SouthEndNews](https://www.facebook.com/SouthEndNews)

### Letters Policy

The South End News welcomes letters to the editor. All letters must be signed and accompanied by a mailing address and phone number.

e-mail: [letters@southendnews.com](mailto:letters@southendnews.com) | fax: 617.464.7286



**NEED A PLACE TO PLAY?**

**DJ DOG & CAT SERVICES**

203.241.0674  
Book your pet's stay today!

CAN'T WAIT UNTIL THURSDAY FOR THE NEXT ISSUE OF THE SOUTH END NEWS? HEAD OVER TO [MySouthEnd.com](http://MySouthEnd.com)

## Get local and advertise your property in the South End News.

Call Jeff at (617) 464-7280 ext. 202 or email: [sales@southendnews.com](mailto:sales@southendnews.com).



**Letters policy**

To be considered for publication, letters must be no longer than 500 words; refrain from extreme personal attacks; be signed and include an address and daytime telephone number. Writers should refrain from making incorrect statements since they may be barred from future issues. Deadline is noon Tuesday for Thursday's paper. To send us letters: Mail to 46 Plympton St., 5th floor, Boston, MA 02118; FAX to 617.464.7286; E-mail: [letters@southendnews.com](mailto:letters@southendnews.com)

## Crime Report

### Suspect Arrested for Throwing Bricks at Officer's Cruiser

While driving in her cruiser, an officer heard a loud bang on the back window of her cruiser. The officer observed an unknown male near the rear of the vehicle. When the officer pulled a U-turn to investigate, the male, now holding a brick, threw the brick at the windshield of the vehicle. A second officer who had observed the attack, moved in behind the suspect and was able to apprehend him from behind. During the apprehension, the second officer suffered minor injuries. The suspect, 24-year-old Jonathan Andujar of Boston, was arrested and charged with Assault and Battery

by Means of a Dangerous Weapon on a Police Officer and Malicious Destruction of Property. The suspect's motive is unknown at this time.

Said Commissioner William Evans, "These are the types of incidents that my officers deal with on a daily basis. Even with all the training and preparation that we undergo, no one can fully be prepared for these unprovoked and unwarranted attacks. I'm proud that these officers were able to deescalate the situation quickly, but I'm disappointed that this individual put them in a position that jeopardized their safety and the community's."

### Juvenile suspect for firearm related charges

At about 12:00 PM on Friday, December 30, 2016, members of the Youth Violence Strike Force arrested a juvenile suspect for firearm related charges in the area of 434 Massachusetts Avenue in District D-4 (South End).

As a result of information gleaned from an ongoing investigation, officers became aware that a juvenile male known to officers to have street gang affiliations may be in possession of a firearm. Officers conducted a background check of the subject and learned that, in addition to being 17 years old (which precludes him from lawfully possessing a firearm), he also had several open court matters, as well as prior firearm charges. Officers also learned he was being monitored by GPS bracelet and were able to track him to the above location. Of-

ficers approached the subject and conducted a pat frisk for their safety. As a result of the frisk, the officers felt a firearm in the suspect's pocket. The officers were able to safely secure a loaded Sentinel Hi-Standard .22 caliber revolver from the suspect. The 17-year-old juvenile was arrested without further incident and charged with Delinquent to wit: Unlawful Possession of a Firearm, Unlawful Possession of Ammunition, and Unlawfully Carrying a Loaded Firearm.

At about 8:15 AM on Thursday, December 22, 2016, while responding to a radio call an officer from District D-4 (South End) came under attack by an unknown male in the area of 10 Reynolds Way in the South End.

**South End News  
is now on facebook!**

**facebook.com/southendnews**

 Find us on  
**Facebook**

**Follow  
South End News  
on  
twitter**



**go to twitter.com/  
SouthEndNews**

### Commerce

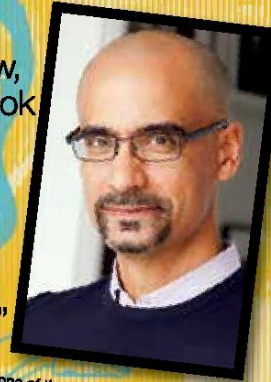
*Continued from page 1*

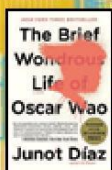
feature an indoor collection of South End businesses, shops and eateries, as well as mu-

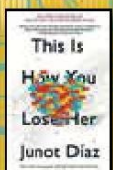
sic, art, a beer garden, a wine bar and a food hall. Proceeds from the event will benefit the Boston Center for the Arts. For more information and tickets, visit <http://www.sebaboston.com/warm-in-the-winter>.

**THE SOUTH END WRITES / THE LIBRARY INVITES**

You're invited to a talk by **Junot Díaz**, MacArthur Genius Fellow, Pulitzer and National Book Critics Circle Awards winner, and acclaimed author of **"The Brief Wondrous Life of Oscar Wao"** and **"This is How You Lose Her."**







*"Díaz has one of the most distinctive and magnetic voices in contemporary fiction: limber, streetwise, caffeinated and wonderfully eclectic..."*  
—*Michiko Kakutani, The New York Times*

**Tuesday, Jan. 10, 6:30 PM**  
**South End Branch, BPL**  
Seating is limited. Refreshments served. The event is free.

685 Tremont Street, Boston 02118  
The South End Library is fully handicapped accessible.

For more information, visit  
[www.friendsofsouthendlibrary.org](http://www.friendsofsouthendlibrary.org)



# Cathedral

Continued from page 1



Photos by Patrick O'Connor

## REAL ESTATE



Where will you live until you can call this 'Home' again?  
Your association policy won't cover your additional living expenses.  
Condo owners **NEED** Personal Condominium Insurance for that.  
Aside from replacing your personal property, it will help you with rent, while you're still paying your mortgage.  
Contact us.

617-437-9400 [www.jjbodner.com](http://www.jjbodner.com) 8 Clarendon St Boston

**JJBodner**  
Insurance Agency of Boston

CAN'T WAIT UNTIL THURSDAY FOR THE NEXT ISSUE OF THE SOUTH END NEWS? HEAD OVER TO [MySOUTHEND.COM](http://MySOUTHEND.COM)

**PARKER HILL APARTMENTS**  
*The Style, Comfort and Convenience you Deserve!*

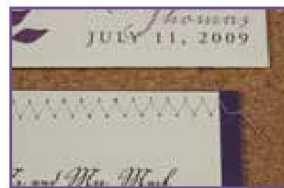
- Heat and Hot water always included • Modern laundry facilities • Private balconies/some with city views • Plush wall to wall carpet • Adjacent to New England Baptist Hospital • Secured Entry • Elevator Convenience • Private Parking • Near Public Transportation and much more...

**1 Bedroom available for \$1,600**

Call today for more details and to schedule a visit: **888-789-8813**

ASK ABOUT OUR MOVE-IN SPECIAL & NO SECURITY DEPOSIT PROGRAM

## lynn graham designs



custom wedding invitations

- save - the - dates
- programs
- menus
- escort cards

[www.lynngrahamdesigns.com](http://www.lynngrahamdesigns.com)

253 shawmut ave, suite 2a • boston, ma 02118  
617.460.2532 • [info@lynngrahamdesigns.com](mailto:info@lynngrahamdesigns.com)

# SERVICE GUIDE

## PLUMBING • HEATING • HVAC

### S.G. Harold Plumbing, Heating & AC

Specializing in Viessman Boiler  
Home Heating Repairs & Service  
Unico Air Conditioning • Radiant Floor Heating

**Boston 617-522-1000**  
Unprecedented Service Tailored To You  
MA Lic # 10589

## CLEANING SERVICES



**Greater Boston Area**  
**Spring Cleaning**  
*For All Seasons*

- Trustworthy cleaning services to meet your needs
- Houses, apartments and commercial
- Schedule that works best for you, weekly, bi-weekly, or monthly
- All routine housework, plus special clean-up jobs
- Owner supervised cleaning crew and ensures quality
- Excellent references and competitive rates

**Cleaning by Judy 617-501-9645**

## V.I.P. CLEANING SERVICES

**RESIDENTIAL & COMMERCIAL**  
(houses • apartments • offices • stores • clinics • buildings • etc)  
• POST-CONSTRUCTION • POST-PARTY  
• MOVE-INS / MOVE-OUTS  
• WEEKLY, BI-WEEKLY, MONTHLY, ONE-TIME  
• GOOD REFERENCES AND RATES  
• 15 YEARS OF EXPERIENCE  
PLUS: PAINTING SERVICES

**Alex Hipolito: 617 309 0261**

## ROOFING

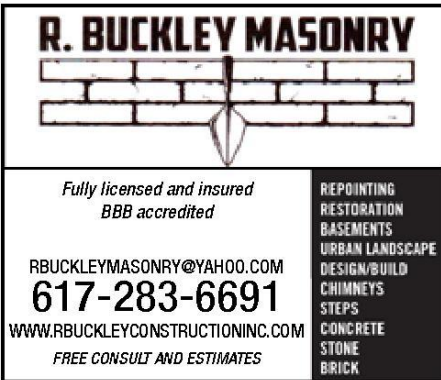


**McDonnell Roofing Co.**  
Roofing Specialist

*Fully Insured*  
Slate and Copper Work - Rubber Roof Systems  
Shingles and Gutters - Repairs - Lic. Contractor Reg. #100100

**617-288-3448**  
Free Estimates • Over 40 years of experience  
**McDonnellRoofingBoston.com**

## Masonry



**R. BUCKLEY MASONRY**

*Fully licensed and insured  
BBB accredited*

REPOINTING  
RESTORATION  
BASEMENTS  
URBAN LANDSCAPE  
DESIGN/BUILD  
CHIMNEYS  
STEPS  
CONCRETE  
STONE  
BRICK

RBUCKLEYMASONRY@YAHOO.COM  
**617-283-6691**  
WWW.RBUCKLEYCONSTRUCTIONINC.COM  
FREE CONSULT AND ESTIMATES

## BRUNO GUERRIERO CONSTRUCTION, INC.

**Water Proofing Solutions**  
Basements • Facades • Chimneys



**Emergency Repairs**  
Roofs & Walls • Clean Outs

COMPLETE MASON CONTRACTOR  
Custom Brick, Stone Work & Brick Pavers  
ALL TYPES OF REPAIRS AND RESTORATIONS

Flood Damage Repair • Brownstone Repair • Stairs Restored • Foundations

BrunoGuerrieroConstruction.com • Brunosworld@comcast.net

MENTION THIS AD, GET 10% OFF

HIC  
REG#  
268196

FULLY INSURED

(800) 444-5476

FREE ESTIMATES



## MASONRY



## P. Stones Contracting, Inc.

Specializing in Historic Restoration,  
Brick Repointing, Brick, Block, Stone,  
Basement Floors, Caulking & Waterproofing.

Ornamental window sills, window headers and moldings.

Fully licensed and insured. 15 years of satisfied customers and referrals.

Office: 781-848-6922 • Fax: 781-848-6923

Cell: 617-592-0850 • pstonescontracting@hotmail.com

## CONSTRUCTION • GENERAL • REMODELING

### The Dependable Handyperson

FINE PAINTING AND REFINISHING  
SMALL REPAIRS AND RENOVATIONS  
DECK AND GARDEN WORK

Call Jean at 617-236-1795  
dependablehandy@aol.com

## PRECISION WOODWORKING & GENERAL CONTRACTING

Commercial and Residential Builders

KITCHENS • BATHROOMS • ROOFING • DECKING • PAINTING  
MASONRY • TILING • WINDOWS & DOORS • BUILDING RESTORATION  
Finish Carpentry • Historic Windows • Slate and Copper Work

20 Years experience in the South End • Licensed & Insured  
John O'Shea: 617-590-6650

## WALDRON CONTRACTING SERVICES, INC.

ROOFING • SHINGLES • SLATE • COPPER  
MASONRY • BRICK POINTING • HISTORICAL RESTORATION  
COMPLETE BUILDING ENVELOPE REPAIR



PLEASE CALL MARK  
OFFICE: 781-963-4300  
CELL: 617-699-7922  
FREE ESTIMATES • FULLY INSURED  
LICENSE  
#CS89674  
LICENSE  
#HIC 13872

## MASONRY

### Rynne Masonry, Inc

20 Years of Experience Working with Clients in the South End  
Specializing in all types of Brownstone Restoration

Brickwork • Repointing  
Step Repair (Rebuild, Restore and Resurface)  
Chimney Repair • Basement Flood Repairs

Fully Insured and licensed. Please call for references and work samples.  
Francis Rynne 617-510-2775 or 617-783-0516

## ELECTRICAL



PROVIDING QUALITY  
ELECTRICAL SERVICES  
to the BOSTON AREA

Residential & Commercial  
Free Estimates  
24 Hour Service

Dedicated to Customer Service Since 1971

617.542.2000  
www.ds-electric.com

Mass Licence #14580A

## South End News

Service Guide Ads Get Results.

617.464.7280 • sales@southendnews.com

# WAVE IN THE NEW YEAR

WITH SIMPLY FREE CHECKING FOR YOU OR YOUR BUSINESS!



## WITH EVERY NEW CHECKING ACCOUNT YOU'LL RECEIVE FREE:

- Mobile Banking with Check Deposit
- Access to Allpoint® ATMs
- Online Banking and Bill Pay
- Instant issue ATM/VISA® check card
- e-Statements
- Check Buy-Back\*



Sentry® 4400mAh Power Bank



Stanley® Screwdriver Set



**East Boston Savings Bank**

800.657.3272 EBSB.com

Minimum deposit of \$50 is required at account opening. Customer purchases checks. We reserve the right to substitute a gift of similar value while supplies last. Please note in the event the value of the free gift exceeds \$10, the bank is required to report the gift value on form 1099-INT or 1099-MISC. The recipient is responsible for all applicable taxes. \*We'll pay you up to \$15 for your unused checks and check card from another financial institution. Offer may change at the discretion of the bank at any time.

Member FDIC Member DIF Equal Housing Lender.

## The Law Offices of Donald E. Green

### EVERYONE IS GOING GREEN!

For all your legal needs, call The Law Offices of Donald E. Green.

We concentrate in **personal injury** matters as well as **criminal defense, civil rights, immigration matters, family/probate issues, bankruptcy, real estate and sexual harassment claims.**

Please call **Attorneys Don or Annette Green** at (617) 442-0050 or toll free at 1-877-DON-GREEN or email [dgreen@donaldegreen.com](mailto:dgreen@donaldegreen.com) or [agreen@donaldegreen.com](mailto:agreen@donaldegreen.com)

Conveniently located on the South Shore and in Dudley Square:

- 500 North Main St, Unit B, Suite 2 in Randolph, MA 02368
- 2235 Washington Street in Roxbury (walk-ins welcome)

Home visits provided



DON GREEN

GO GREEN FOR  
YOUR LEGAL  
NEEDS!



ANNETTE HILL GREEN

# Change your future, change the world

With a degree from **Cambridge College**

- School of Undergraduate Studies
- School of Education
- School of Management
- School of Psychology & Counseling



**Cambridge College**

Where you come to be.

Classes begin January 17th, 2017  
Call 800-829-4723 to apply!

[CambridgeCollege.edu](http://CambridgeCollege.edu)

