

Trinity Financial celebrates complete renovations

BY MICHELE D. MANISCALCO

Residents and neighbors of 35@860, Trinity Financial's two affordable apartment buildings at 35 Northampton Street and 860 Harrison Avenue, partied on Northampton Street on Saturday, September 23 at Trinity Financial's block party to celebrate the completion of two years of live-in renovations at the 347 unit affordable housing complex.

Bright sunshine and a cool breeze greeted the party, which of



Photo by Michele Maniscalco

Continued on page 4

Ornate, surreal "King"

Exit the King, Actors' Shakespeare Project, at Paramount Theatre, Boston, through October 8. 617-824-8400 or www.emersonparamount.org

BY JULES BECKER

Few theatergoers would misidentify the work of Eugene Ionesco with that of Samuel Beckett and vice versa. Ionesco plays generally prove expansive in their appearance and effect—for example the deliberately escalating title furniture clutter of



Richard Snee as King Berenger and Dayenne Walters as his doctor in "Exit the King" (photo credit Nile Scott/Actors' Shakespeare Project)

Continued on page 2

Remembering Mary DeLoach

1941-2017

BY ALISON BARNET

Summer 2007: Mary sits out on her stoop on a couple of worn-

out cushions. The steps are painted old-style red, and 10 Greenwich Park is looking worn in general, but Mary is the same as she's always been, letting it all hang out, holding forth, telling stories of who's related

to who and what went on in local hot spots years ago. She doesn't like to be interrupted for clarification. Most of her stories involve old

Continued on page 5

ASK DOG LADY



Advice on Pets, Life, Love

BY MONICA COLLINS

Dear Dog Lady,

Putting my pug down to rest was very difficult. My pug Clara was put to rest over the weekend due to a fall

and a fracture from which it would have been very difficult for her to recover. Clara was 10-years-old and a gift from my beloved mother ten years ago. The dog was a delightful surprise and had a wonderfully uplifting spirit that added much to my life. I now miss her dearly. We grew old together. We both had our youth when we first met but our looks turned gray and white over this past decade. She was my best friend. It's so difficult being without her but I have some wonderful memories of our time together. My dog will be forever missed.

Thank you for letting me write to you about Clara. Just expressing my feelings in this email has helped me. Do you have any suggestions on

Continued on page 3

South End Crime

Security guard stabbed in the hand at pharmacy

BY ADAM GAFFIN
WWW.UNIVERSALHUB.COM

Shortly after 9:40 p.m. on September 28, at the Walgreens at 1603 Washington Street, a security guard was stabbed in the hand. Police are looking for three suspects: Two white men and a white woman, all in their 30s.

Topeka Streets, South End.

Upon arrival, officers observed a male victim who appeared to be in his 30's suffering from a gunshot wound. The victim was transported to Boston Medical Center, where he was later pronounced deceased. The victims has since been identified as Carlos Montalvo, 33, of Boston.

The Boston Police Department is actively reviewing the facts and circumstances surrounding this incident. Anyone with information relative to the investigation is strongly urged to contact Boston Police Homicide Detectives at (617) 343-4470.

Victim Identified in Death Investigation

BY BOSTON POLICE DEPARTMENT

At about 6:40 AM on Sunday, September 24, 2017, officers from District C-6 (South Boston) responded to a radio call for a person shot in the area of Southampton and

Community members wishing to assist this investigation anonymously can do so by calling the CrimeStoppers Tip Line at 1 (800) 494-TIPS or by texting the word "TIP" to CRIME (27463). The Boston Police Department will stringently guard and protect the identities of all those who wish to help this investigation in an anonymous manner.

REGISTER TO VOTE!

Deadline to Register: October 18
Municipal Election: November 7
www.boston.gov

Public Meeting

112 SHAWMUT AVENUE

WEDNESDAY, OCTOBER 11
6:00 PM - 7:00 PM

PROJECT PROPONENT:
The Davis Companies

PROJECT DESCRIPTION:
Public Meeting to discuss the Proposed Project at 112 Shawmut Avenue in the South End. The Davis Companies have proposed the rehabilitation of the existing six-story building and the construction of an additional seven stories to create a thirteen-story building comprised of approximately 155 residential units.

112 SHAWMUT AVENUE
5th Floor
Boston, MA 02118

CLOSE OF COMMENT PERIOD:
10/30/2017

MAIL TO: CASEY HINES
Boston Planning & Development Agency
One City Hall Square, 9th Floor
Boston, MA 02201

PHONE: 617.918.4244
EMAIL: Casey.A.Hines@Boston.gov

BostonPlans.org | @BostonPlans
Teresa Polhemus, Executive Director/Secretary

King

Continued from page 1

"the Chairs" and the purposeful animalization of transformed humans in "Rhinoceros."

Beckett plays characteristically involve small casts in fairly spare visual representation—among them, the ordeal-ridden wife and husband of "Endgame" and the memory and past-obsessed title solo figure of "Krapp's Last Tape."

By contrast, Ionesco's mortality-centered "Exit the King" moves from a fairly busy stage to one focused on the dying of the title monarch. Now Actors' Shakespeare Project is giving Berenger a royally fitting departure on the intimate grounds of the Jackie Leibgott

Black Box at the Paramount Theatre.

The third and final part of the Berenger Trilogy, which began with "Rhinoceros," "Exit the King" is set here in an elegant but ironically open construct—kudos to set designer Cameron Anderson—with an ornate chandelier above and a gold tinsel backdrop.

Abouty of gold colored balloons suggests a celebration, and the monarch's unassuming gold colored crown gives the impression of a birthday party. A young mic-bearing shirtless attendant wearing sunglasses, a black jacket, short pants and long boots occasionally makes an announcement for the king. Berenger may be 400 years old, but his strange demeanor re-

Continued on page 3

Tremont

DENTAL CARE

Proudly Servicing our Community with Dental and
Cosmetic Excellence

Setup a Free Consultation Today!

- General Dental Services
- Specialty Dental Services: Root Canals, Perio Care, Implants, Oral Surgery
- Cosmetic Services: Whitening, Veneers, Botox, Fillers

635 Tremont Street Boston MA 02118 Tel 617 424 0606 Fax 617 424 0006
www.tremontdentalcare.com info@tremontdentalcare.com

Dog Lady

Continued from page 1

how to recover from this loss? Any information will be appreciated.

—George

Dear George,

There's no easy way to get through what you're going through. Losing a cherished pet is one of the hardest adjustments a human must endure. The wave of profound grief is also so surprising at first because you keep reminding yourself the deceased was a dog, not a human relation. Dog Lady was more bereft when her beloved dog Shorty died than when her closest relatives passed away. She didn't really want to acknowledge it but the heartache was so true and deep. She had never felt such anguish before.

People around you are sympathetic to your loss but, after a while, you can tell they are losing patience, leaving you alone with your sorrow. "Ask Dog Lady" appreciates why you have reached out to this column for solace.

The best advice is to keep on putting one foot in front of the other. Look for pugs on the street and ask their keepers if you can sneak a pet. Inevitably, through that gossamer contact, you will remember Clara with a smile instead of a stab in the gut.

For more insight and non-judgmental comfort, call the Pet Loss Support Hotline operated by students at Tufts University's veterinary school. The hotline, 508-839-7966, is open Monday to Friday from 6 to 9 p.m. but you can leave a voicemail anytime. The students are supervised by mental health professionals. Learn more at <http://vet.tufts.edu/petloss/>.

Also, check out <http://animalcareveter.com> for Unitarian minister Eliza Blanchard's counseling on pet grief and support of caregivers.

Dear Dog Lady,

As a daughter, parent, grandparent, aunt, great aunt, I want to thank you very much for reminding people in your column, twice that I know of, that dogs are pets, not babies. I have attended graduation parties, juried art shows with expensive personal displays of vendors,

holiday outdoor parties and I have even rode my bike on the bike path in the unwanted company of dogs brought by clueless adults. These people with dogs intrude on countless other people. Personally I think dog parks are for dogs; people parties and events are for people.

—Diane

Dear Diane,

Much appreciation for your careful reading of the column. We dog devotees must try very hard not to be blinded by the love. A canine keeper can consider his or her dog as a person in a fur suit and extend all human niceties. But we must be always vigilant and respectful about others' boundaries. And, gulp, not everybody loves dogs. Dog Lady is here to remind pet people that four-legged friends belong to another species. They must be treated accordingly—although, gee, it is sometimes easy to forget they can't speak English.

Dear Dog Lady,

Our wheaten terrier, Maggie, has lately started to scratch the carpet as if she's dig-

ging dirt. She has never done this before and it started only last week. She's quite furious about this. What gives? Is there something in the carpet that she smells or wants? She only stops when we tell her to, but it's annoying and puzzling. Any advice?!

—Craig

Dear Craig,

Unfortunately, she can't bury her past and her powerful terrier go-to-ground genes. Dig she must. Have you given her anything precious in the last week—a bone, a very special treat, a new toy? She could be trying to hide her stuff. Also, is it cooler under the carpet than on top? Probably. She might be trying to unearth a cool spot.

Dog Lady has watched dogs dig in their beds, the sofa cushions, the lounge pillows. Their indoor dredging can be destructive and it's also little cheerless because they work so hard for so little reward. Do you have any real dirt to offer dear Maggie? Carpet digging should cease as the air turns cooler.

Write askdoglady@gmail.com.

King

Continued from page 2

sembles that of a child at one moment and a schoolboy at another.

At the same time, his curious attire featuring a colorful robe and pajama pants—credit costume designer Olivera Cajic—and a scepter that looks like an IV stand call to mind a hospital patient. Ionesco's own 1962 ailing clearly influenced his pre-occupation with mortality in the play.

Buffoonish Berenger is constantly attended or watched by a doctor, whose diagnosis is far from hopeful. The king may be in denial about his worsening rheumatism and deteriorating physical condition, but unsentimental ex-queen Marguerite quite candidly warns him that he will be dead in 90 minutes (in fact in real time in the play).

Young current wife Marie cries inconsolably about his medical state, but just as concerning is the spiraling damage to the universe wreaked by Berenger's self-absorption. A nightmare scenario finds Mars and Jupiter colliding and a polytechnic university ending up in a sinkhole. The delusional king seems as oblivious to such changes as Trump to climate change. Is Berenger suffering from dementia?

Eventually the answer may be of less importance than the impact of his incompetence on those around him and around the world.

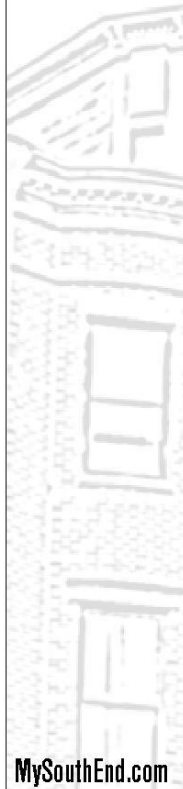
ASP guest director Dmitry Troyanovsky captures the dark humor and the accelerating tensions affecting the tyrannical ruler and his entourage in Ionesco's strong absurdist conception. Comically gifted Richard Snee smartly balances Berenger's thoughtless cruelty and his increasingly silly approach to both living and governing.

Snee richly calibrates the king's descent into dying. Sarah Newhouse has all of Marguerite's tenacity and wise stoicism. Jesse Hinson, in a brilliant example of gender-bending casting, finds all of Marie's emotional volatility as well as her self-serving histrionics. Dayenne Walters has understated authority as Berenger's doctor. Rachel Belleman as maid/nurse displays fitting strength and resourcefulness. Hunky Gunnar Manchester has the guard's loyalty and obedience.

All human beings, of course, will eventually confront death. Will they face their respective fortunes with dignity and grace? Ionesco may be providing both wake-up call and warning through his uncompromising portrait of selfishly grasping Berenger. Still ASP's properly surreal "Exit the King" makes intimations of mortality curiously alluring.

Your Neighborhood.

Your Website.



MySouthEnd.com

Langham Court Apartments
Now Leasing
 Hardwood Flooring
 Stainless Steel Appliances
 Granite Countertops
 Some paid utilities
 Individual zone climate heating & ac
 Garage parking available
 Kitchen pantry
 On-site laundry
 Control-access entry
 28 Winchester Street, Boston, MA 02118
 Spacious 1&2 bedroom apartment in great South End location.
 One Bedroom starting \$2,500
 Two Bedrooms starting \$3,200
 Steps to Boston Medical Center, Restaurant, Shops and MBTA Silver Line
 Office Hours
 Mon-Fri 9:30am-5:00pm
 Phone: 617.859.7967
 Fax: 617.859.0224
 E-mail: langhamcourt@sermo.com
 Managed by Winfieldcrest

SERVICE GUIDE

CLEANING

Spring Cleaning

For All Seasons

- Trustworthy cleaning services to meet your needs
- Houses, apartments and commercial
- Schedule that works best for you, weekly, bi-weekly, or monthly
- All routine housework, plus special clean-up jobs
- Owner supervised cleaning crew and ensures quality
- Excellent references and competitive rates



Cleaning by Judy
617-501-9645

Get local and advertise
 your property in the
South End News.

Call Jeff at (617) 464-7280 ext. 202
 or email: sales@southendnews.com.

Trinity

Continued from page 1

ferred free food and soft drinks, music, face painting, on-site art and information booths from Boston Medical Center, Boston Public Health Commission and Pilot House addiction services.

Eventspokesperson Madeline Fitzgerald reported that 400 to 500 people attended the block party, including Mayor Martin J. Walsh, who mingled with guests, chatting and posing for pictures. Café Quattro at 817 Harrison Avenue provided plain and pepperoni pizzas; Smokey Slushes served several flavors of water ice and Total Entertainment provided music by DJ Vernon West, who deftly mixed

disco and R & B with current dance tunes to create a fresh mix.

A young man with a flower behind his ear danced non-stop throughout the party. Next to the DJ table, a painter from Artists for Humanity painted canvases while guests watched. At the face painting table, a woman had a Puerto Rican flag painted on her cheek out of respect and concern for her relatives and friends on the island who were caught in the paths of the ferocious hurricanes Irma and José.

Eva Erlich, vice president of development for Trinity Financial, explained that the company has been working on the two apartment buildings, which total 347 affordable units, since 2010 and completed a two-year renovation with tenants living on site in 2016. "We

did a lot of work on the exterior and tried to change the way the buildings interact with each other and with the neighborhood," Erlich said.

"We decided we wanted to celebrate all the work the residents lived through and the re-visioning of the two buildings. We see it as a chance to bring the residents together and we invited folks from Roxbury and the South End to tie this development, which has historically been an institutional, medical area to the surrounding neighborhoods." Erlich said the buildings were constructed as dormitories for the nursing school at Boston City Hospital between 1969 and 1973 and they were "tired." "As far as I know, the residents are very happy with how they look now."



Photos by Michele Maniscalco

38 / 39

Publishers:

Jeff Coakley [ext. 202]
Sue O'Connell [ext. 215]

Editor-in-Chief:

Sue O'Connell [ext. 215]
sue.southendnews@gmail.com

Editorial Design Manager:

Daniel J. Raps
danielj.raps@gmail.com

Contributing Writers:

C.D. Hermelin
Michele D. Maniscalco
Jack Maypole, MD
Dog Lady

Display Advertising:

Jeff Coakley [ext. 202]
jcoakley@southendnews.com

Classified Advertising:

classifiedads@southendnews.com

Letters to the editor:

letters@southendnews.com

Calendar listings:

sencalendar@southendnews.com

© 2017 South End News Inc.
PO BOX E14,
Boston, MA 02127
(617) 464-7280; FAX (617) 464-7286

The South End News is a copyrighted publication. Any stories or photos contained herein may not be reproduced in whole or in part without the express written permission of the publisher. The South End News will not assume financial responsibility for typographical errors in advertisements. Questions or complaints regarding advertising must be sent in writing to the billing department within seven days of publication in order for adjustments to be made to the account. We reserve the right to use our discretion in accepting or rejecting advertising copy. South End News is not responsible for damages due to typographical errors, except for the cost of replacing ads that have typographical errors caused by our negligence. South End News is published every Thursday.

www.southendnews.com

[Facebook.com/SouthEndNews](https://www.facebook.com/SouthEndNews)



Letters policy

To be considered for publication, letters must be no longer than 500 words; refrain from extreme personal attacks; be signed and include an address and daytime telephone number. Writers should refrain from making incorrect statements since they may be barred from future issues. Deadline is noon Tuesday for Thursday's paper. To send us letters: Mail to 46 Plympton St., 5th floor, Boston, MA 02118; FAX to 617.464.7286; E-mail: letters@southendnews.com

Mary

Continued from page 1

South Enders: Cookie, Lowell Davidson, Jack Crump (father and son), Calvin McLean, Bill Carrington. "It was grand around here," she says of hairdresser Gene Marsman. "It was glamour. You wouldn't come out the door at 6 o'clock if you weren't dressed."

Some of those old South Enders are still around. Mary says they come up to her on the street: "Do you know me?" "Of course, I know you! I know what family you're from."

Mary was born on Concord Square in 1941. Her family was from the South. She grew up one of the local kids who participated in programs at 48 Rutland Street. Negative experiences became badges of honor. She was kicked out of Girls' High School. Why? "For being myself, I guess."

In 1966 she was one of the incorporators of the South End Neighborhood Action

Program or SNAP, going to work for ABCD/ SNAP in 1972. She worked for Just-A-Startand in the summer of 1968 with 47 high school and college students in a BRA program in which students built and repaired South End playgrounds. Most of these programs were headquartered on W. Brookline St., including the Store Front Learning Center, with which she was also involved. There were so many non-profits on that block that Mary used to laugh, "Money was coming down the Pike."

Mary was good to me. She knew of my interest in South End history and she supplied me with plenty. She'd call me up and say she had something to show me and when I went to get it I needed a shopping cart to bring it all home.

There's a FOR SALE sign on the 10 Greenwich Park fence. A P&S has been signed, and the closing is supposed to take place August 30. Mary plans to move to Santa Fe where she once lived and where, on June 16, 2017, she died at age 75.

South End News

Service Guide Ads Get Results.

For more information please call:
617.464.7280
 or email: sales@southendnews.com

South End News
 is now on
facebook!

[facebook.com/southendnews](https://www.facebook.com/southendnews)



Find us on
Facebook

Affordable Rental Housing
9 Williams Street Rental Housing
9 WILLIAMS STREET, ROXBURY, MA 02119

9 Williams Street Rental Housing will accept applications for 21 units:

TYPE	Studio	1 BR	2 BR	3 BR
Section 8-PDV from FHA, 30% AMI	0	3*	3	0
	See below*	See below*	See below*	See below*
60% AMI	0	1	1*	2
Gross Rent**	N/A	\$1,164	\$1,396	\$1,611
70% AMI	0	0	4	1
Gross Rent**	N/A	N/A	\$1,445	\$1,630
UNIT TOTALS	0	4	14	3

*Preference for persons with mobility impairment: 1 (for PDV (FHA unit) 1 (for 60% AMI unit)
 **Rents are based upon adjusted gross income. Section 8 available through the Boston Housing Authority (BHA). To apply, households should contact the BHA, 32 Chauncy Street, Boston, MA 02111
 **Gross Rent includes utility allowance with tenant payment for heat, hot water, and electricity.

Use and Occupancy Restrictions Apply
 Applications may be requested by email at 9williams@boston.gov or picked up during the following dates and times at
207 Dudley Street Roxbury MA 02119 (Management Office)
 Reasonable accommodations made
 Applications available: **Monday-Friday 10/16/17 - 10/27/17 & Monday 10/30/17**
 Hours: 9 a.m. - 4 p.m.
 Saturday 10/28/17
 Hours: 10 a.m. - 1 p.m.

AN INFORMATION SESSION WILL BE HELD AT 464 TREMONT STREET BOSTON MA
 (Castle Square Apartments Community Room)
THURSDAY OCTOBER 19, 2017 6PM-8PM
 Applications will be available at the information session.

For more information or an application to be sent by mail or alternate means, call Madison Park Management Office during the application period of 10/16/17 to 10/30/17
 Phone: 617-445-8338
 Deadline for completed applications to be in the lettering is in person at the Management Office by 4:00pm 11/13/17 or mail postmarked by 11/19/17

SELECTION BY LOTTERY
 Two units have a preference for persons with mobility impairment
 Preference for households of at least one person per bedroom
 Maximum Income Limits by Household:

HH Size	60%	70%
1 Person	\$41,440	\$50,700
2 Persons	\$49,680	\$57,840
3 Persons	\$55,920	\$65,590
4 Persons	\$62,560	\$72,400
5 Persons	\$67,120	\$78,300
6 Persons	\$72,000	\$84,000

Voucher holders not subject to minimum income requirements or rent at payment standard
 Contact 617-445-8338 or TDD: 1-800-439-2370 for Reasonable accommodations regarding the application process or to request an application by mail
 Translation assistance is available
 2101 Washington Street Rental Housing is an equal housing opportunity
 Managed by WinResidential

CAN'T WAIT UNTIL
 THURSDAY FOR THE
 NEXT ISSUE OF THE
 SOUTH END NEWS?
 HEAD OVER TO
MYSOUTHEND.COM

PARKER HILL APARTMENTS
The Style, Comfort and Convenience you Deserve!

- Heat and Hot water always included • Modern laundry facilities • Private balconies/some with city views • Push wall to wall carpet • Adjacent to New England Baptist Hospital • Secured Entry • Elevator Convenience • Private Parking • Near Public Transportation and much more...

1 Bedroom available for \$1,600

Call today for more details and to schedule a visit:
888-789-8813

ASK ABOUT OUR MOVE-IN SPECIAL & NO SECURITY DEPOSIT PROGRAM

*Where will you live until you can call this 'Home' again?
 Your association policy won't cover your additional living expenses.
 Condo owners NEED Personal Condominium Insurance for that.
 Aside from replacing your personal property, it will help you with rent, while you're still paying your mortgage.
 Contact us.
 617-437-9400 www.jjbodner.com 8 Clarendon St Boston*

JJBodner
 Insurance Agency of Boston

South End Soccer Fall Fundraiser

Sunday, Oct. 29th from 5:00-8:00pm, The Beehive, 541 Tremont Street, South End Soccer invites you to help raise funds needed to provide free programming annually to over 1,200 youth.



Hors d'oeuvres, cash bar, raffle and more. Tickets only \$50.

South End Soccer is a non-profit 501c3

organization committed to providing high-quality soccer programming to children in Boston's South End, Roxbury, Chinatown and adjacent neighborhoods. Our goal is to give children between the ages of 5 & 18 the opportunity to play soccer and learn to engender a love of the game regardless of prior experience or economic means.

Our recreational league plays from September through November, we provide futsal training in the winter, soccer enrich-

ment programming to neighborhood youth programs in the summer, and in 2014 we launched travel teams through a partnership with New England RUSH which play in the fall and spring. To increase opportunities for youth across the city, we partner with Boston Parks & Recreation, Mass Youth Soccer, AmericaSCORES and other youth serving organizations. We are a member of Mass Youth Soccer, and follow their philosophy of coach training, instruction and play.

Through the generous support of parents, community members, colleges and universities, local businesses and organizations, we are able to provide programming at no cost- many thanks to all supporters for being leaders in making it possible for any child to get on the field and join the fun.

For more information and to buy tickets www.southendsoccer.org

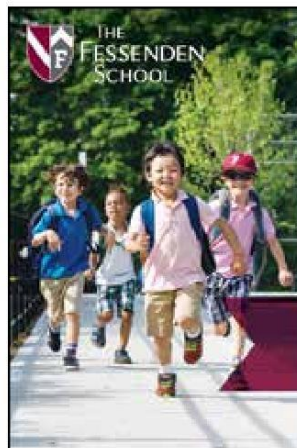
CAN'T WAIT UNTIL THURSDAY FOR THE NEXT ISSUE OF THE SOUTH END NEWS? HEAD OVER TO MYSOUTHEND.COM

Exercise and Depression

BUMC Dept. of Psychiatry is conducting a research study on yoga, walking and depression.

- No medications are added during the study.
- You may continue medications and therapy.
- Eligible participants will be paid.

Contact **(617) 638-8046** or yogast@bu.edu



2017 OPEN HOUSES

PRE-K – GRADE 9
Sunday, Oct. 22, 2017 | 1:00 – 3:00 PM

PRE-K & KINDERGARTEN
Tuesday, Nov. 14, 2017 | 6:30 – 8:00 PM

PRE-K – GRADE 4
Monday, Dec. 4, 2017 | 9:00 – 11:00 AM

Pre-register at Fessenden.org/OH17 or call 617-630-2300

THE FESSENDEN SCHOOL
250 WALTHAM STREET, WEST NEWTON, MA

Follow South End News on Twitter
go to twitter.com/SouthEndNews

NOW TWO LOCATIONS

House of Siam

Open for Lunch & Dinner
Come Experience our Beautiful Dining Room and the Freshest Thai Cuisine in Boston

592 Tremont Street (near Dartmouth Street)
Take out is available from 11:30 a.m. to 11:00 p.m. daily

617.267.7426
542 Columbus Avenue
617.267.1755

THE SOUTH END WRITES/THE LIBRARY INVITES

You're invited to listen to a talk by pediatrician/author **Claudia Gold** about her recent book, **The Silenced Child**, highlighting the developmental and emotional importance of listening to youngsters.

The author will be introduced by South End resident **Ed Tronick**, Distinguished Professor of Psychology at UMass, Boston, and researcher in infant social and emotional development.

Tuesday, October 10, 6:30 PM
South End Branch, BPL

Seating is limited. Refreshments are served. The event is free.

685 Tremont Street, Boston 02118
The South End Library is fully handicapped accessible.

For more information, visit www.friendsofsouthendlibrary.org



SERVICE GUIDE

PLUMBING • HEATING • HVAC

S.G. Harold Plumbing, Heating & AC

Specializing in Viessman Boiler
Home Heating Repairs & Service
Unico Air Conditioning • Radiant Floor Heating

Boston 617-696-2400
Unprecedented Service Tailored To You
MA Lic # 10589

ROOFING

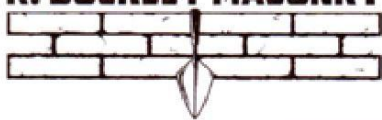
McDonnell Roofing Co. Roofing Specialist

Fully Insured
Slate and Copper Work - Rubber Roof Systems
Shingles and Gutters - Repairs - Lic. Contractor Reg. #100100

617-288-3448
Free Estimates • Over 40 years of experience
McDonnellRoofingBoston.com

MASONRY

R. BUCKLEY MASONRY

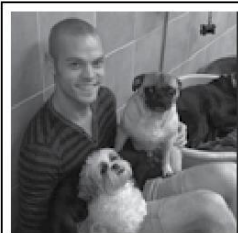


*Fully licensed and insured
BBB accredited*

RBUCKLEYMASONRY@YAHOO.COM
617-283-6691
WWW.RBUCKLEYCONSTRUCTIONINC.COM
FREE CONSULT AND ESTIMATES

REPOINTING
RESTORATION
BASEMENTS
URBAN LANDSCAPE
DESIGN/BUILD
CHIMNEYS
STEPS
CONCRETE
STONE
BRICK

PET CARE



NEED A PLACE TO PLAY?

DJ DOG & CAT SERVICES

203.241.0674
Book your pet's stay today!

BRUNO GUERRIERO CONSTRUCTION, INC.

Water Proofing Solutions
Basements • Facades • Chimneys



Emergency Repairs
Roofs & Walls • Clean Outs

COMPLETE MASON CONTRACTOR
Custom Brick, Stone Work & Brick Pavers
ALL TYPES OF REPAIRS AND RESTORATIONS

Flood Damage Repair • Brownstone Repair • Stairs Restored • Foundations

BrunoGuerrieroConstruction.com • Brunosworld@comcast.net

HIC
REG#
288196

FULLY INSURED

MENTION THIS AD, GET 10% OFF

(800) 444-5476

FREE ESTIMATES



MASONRY



P. Stones Contracting, Inc.

Specializing in Historic Restoration,
Brick Repointing, Brick, Block, Stone,
Basement Floors, Caulking & Waterproofing.

Ornamental window sills, window headers and moldings.
Fully licensed and insured. 15 years of satisfied customers and referrals.

Office: 781-848-6922 • Fax: 781-848-6923
Cell: 617-592-0850 • pstonescontracting@hotmail.com

MASONRY

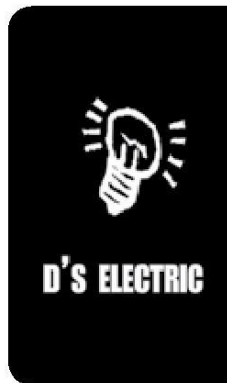
Rynne Masonry, Inc

20 Years of Experience Working with Clients in the South End
Specializing in all types of Brownstone Restoration

Brickwork • Repointing
Step Repair (Rebuild, Restore and Resurface)
Chimney Repair • Basement Flood Repairs

Fully Insured and licensed. Please call for references and work samples.
Francis Rynne 617-510-2775 or 617-783-0516

ELECTRICAL



PROVIDING QUALITY
ELECTRICAL SERVICES
to the BOSTON AREA

Residential & Commercial

Free Estimates

24 Hour Service

Dedicated to Customer Service Since 1971

617.542.2000
www.ds-electric.com

Mass Licence #14580A

CONSTRUCTION • GENERAL • REMODELING

The Dependable Handyperson

FINE PAINTING AND REFINISHING
SMALL REPAIRS AND RENOVATIONS
DECK AND GARDEN WORK

Call Jean at 617-236-1795
dependablehandy@aol.com

DESIGN

www.lynngrahamdesigns.com
617.460.2532 • info@lynngrahamdesigns.com

event invitations • save - the - dates • wedding programs
custom wedding invitations • wedding menus • escort cards
social stationery • address labels • announcement cards

lynn graham designs

Get local and advertise your
property in the *South End News*.

Call Jeff at (617) 464-7280 ext. 202
or email: sales@southendnews.com.

Service Guide Ads Get Results

For more information please call:
617.464.7280

We've made our move. Come celebrate with us.

CAMBRIDGE COLLEGE IS NOW IN BOSTON.

Join us for an Open House
October 19th at 5pm
RSVP - info@cambridgecollege.edu



Cambridge College

Where you come to be.

A non-profit college. EST. 1971

500 Rutherford Ave.
Charlestown, MA

1.800.829.4723
CambridgeCollege.edu

Study participants needed!

You may be eligible if you meet *any* of the following criteria:

- A diagnosis of bipolar, schizophrenia, or schizoaffective disorder
- Aged 12-35 and have a sibling or parent with schizophrenia or schizoaffective disorder
- Aged 12-35 and recently diagnosed with psychosis

Financial compensation included if eligible!

Contact us to see if you qualify:

cpilo@bidmc.harvard.edu

617-754-1224



The people depicted here are models. Their image is being used for illustrative purposes only.

We are the future of the **LGBT** community.

“The world still has its challenges but things are getting better. From the way we first met on line to marriage equality to our daughter's upcoming Quinceañera our life together is more fulfilling every day. We keep up with events and entertainment on EDGE, because that's where we see our future at its brightest.”

EDGEMEDIANETWORK
the future of lgbt media

edgemedianetwork.com

