

Storybook Ball raised over \$2.2 million

On Saturday, October 14, 2017, MassGeneral Hospital for Children (MGHHC) raised over \$2.2 million in its 18th year of supporting pediatric health via its premier annual event, Storybook Ball.

Demi & Tate Isenstadt, Sonja Kelly & Steve Tordone and Paige & Rick Sutphin of Wellesley co-chaired the event, which showcased the outstanding research and advancements at the MGHHC Food Allergy Center.

Inspired by "Beauty and The Beast," Rafanelli Events transformed



(Left to Right) Sonja Kelly, Demi Isenstadt, Bryan Rafanelli, Paige. Photo by Matt West

Continued on page 3

ASK DOG LADY



Advice on Pets, Life, Love

BY MONICA COLLINS

Dear Dog Lady,

I read your column every time I see it, even though I do not own a dog. I am a cat person, no offense.

However, an answer you gave about dog this morning hit home. I adopted a cat from the animal shelter a year ago.

I live alone so we meshed pretty well except she does not like to be picked up. When she wants attention, she will come within arm's length and lets me scratch her around her head or down her back. If I pick her up she is rigid. This really bothered me until I read in your column about the dog adopted from a puppy-mill who feared being picked up and held.

I am patient. If I pick my cat up, and she stiffens up and cries, I just put her down. I wonder what

happened in her past. I just had to tell you that your dog column helped me with my cat.

—Margaret

Dear Margaret,

Thank you for the lovely grace note. Hearing from a "cat person" makes Dog Lady feel as if she's done her job for all creatures great and small. Our companion animals need our tolerance, our kindness, our responsibility and our patient attention.

Dear Dog Lady,

Recently, I heard you on the

Continued on page 2

Endorsements

Walsh, Kelley, Janey Wu, Pressley, Flaherty, Essaibi-George

Mike Kelley For City Council, District 2

Here's what you don't know about Mike Kelley. He has been active in community service and political activism his entire adult life.

At 18, Kelley had a job at Northwest Airlines (NWA), loading luggage. He was a member of the International Association of Machinists union. He had a sweet job, with sweet benefits.

Kelley had other plans. While still at NWA, he applied and was accepted to the Human Rights

Continued on page 6



Mike Kelley



Photo by Michele Maniscalco

A South End Halloween

BY MICHELE D. MANISCALCO

The South End boasted multiple hot spots for trick or treating, parties and people watching on Halloween night. Pleasant weather no

doubt boosted crowds, with parents and children roaming the street in costume and costumed residents sitting on stoops awaiting the trick or treaters.

Continued on page 5

Lehr at MTW

SUBMITTED BY MTW

Visit More Than Words on Saturday, November 4th from 2:00 - 4:00 PM for a special event with New York Times best-selling author Dick Lehr.

The co-author of Black Mass brings us a gripping YA novel inspired by a true story of a young man's false imprisonment for murder—and those who fought to free him.

On a hot summer night in the late 1980s, in the Boston neighborhood of Roxbury, a twelve-year-old African-American girl was sitting on a mailbox talking with her friends



Dick Lehr

when she became the innocent victim of gang-related gunfire. Amid public outcry, an immediate

Continued on page 5

Vote November 7, municipal elections.

Don't know your ward and precinct, or have any questions or concerns?

www.boston.gov

4 Days left to apply for an absentee ballot or vote absentee in person.



Dog Lady

Continued from page 1

radio talking to a man who called in to discuss his dog's food aggression. The dog growled if touched on its rear quarters while eating. You thought this was a serious enough problem to suggest the man consult a dog behavior specialist.

Not to be a dummy, but why does he have to bother the dog while it's eating? I understand such actions would be bad if the dog was eating and growled at everyone who walked by, or if a dog snapped at children who walked by. But why should the dog tolerate being touched while eating? I recall the dog was a Border collie mix.

My family took in an abandoned Border collie mix when I was a child and she was a fabulous dog. She was very easy to train and became a great farm dog. She was great with people of every age and did not bite, snap or growl – except when she ate. Then, we had to leave her alone.

Apparently, she had some difficulty about food in her first foster home. She only wanted to be fed outside and she watched the windows to make sure no one was looking. We let her eat in peace. It wouldn't occur to me to mess with a dog that's eating.

—Colleen

Dear Colleen,

You bring up a good point. Dogs should be allowed to munch in quiet. If they growl because a human disturbs them while they chow down, well,

just don't ruffle their fur in the midst of a meal. That's good wisdom—up to a point.

The man who called in said he had gotten his Border collie-mix as a 10-week-old pup. The aggression developed as the dog aged. This pattern is troublesome, which is why it is a good idea to consult a veterinarian or a behaviorist before the dog becomes too much older. Something about the dog's health or environment could be causing the behavioral eruption.

Dear Dog Lady,

I would like to get a dog and could use some help choosing one. I am a 66 year old single woman, recently retired. I have a fenced yard. No kids or other pets (well, two parakeets). The dog would be alone for a couple hours maybe three days a week. I would like a dog for companionship and security and I

wouldn't mind a dog who barked at strangers.

I have previously had two dogs: a shepherd-greyhound mix I had for 14 years and a collie-husky mix. I like big hairy dogs but think those days are over. I would like a dog that is less active (a couch potato lap dog) and needs less grooming. I am up for Frisbee in the yard and walks around the block. I would rather the dog not have a smushed-in face.

Can you give me any suggestions? I do want a dog but I haven't met the right one yet. I have been to a few shelters and will get a shelter or rescue dog.

—Doris

Continued on page 3

NOW TWO LOCATIONS

House of Siam

Open for Lunch & Dinner
Come Experience our Beautiful Dining Room and the
Freshest Thai Cuisine in Boston

592 Tremont Street (near Dartmouth Street)
Take out is available from 11:30 a.m. to 11:00 p.m. daily
617.267.7426

542 Columbus Avenue
617.267.1755

Tremont
DENTAL CARE

Proudly Servicing our Community with Dental and
Cosmetic Excellence

Setup a Free Consultation Today!

- General Dental Services
- Specialty Dental Services: Root Canals, Perio Care, Implants, Oral Surgery
- Cosmetic Services: Whitening, Veneers, Botox, Fillers

635 Tremont Street Boston MA 02118 Tel 617 424 0606 Fax 617 424 0006
www.tremontdentalcare.com info@tremontdentalcare.com

Storybook

Continued from page 1

Back Bay's Castle into a magical library and twinkling dining room with canary yellow tablescapes - a nod to Belle's celebrated gown.

Co-Chairs Demi Isenstadt, Sonja Kelly and Paige Sutphin kicked off the speaking program, which also featured Peter L. Slavin, MD, President, Massachusetts General Hospital, Ronald E. Kleinman, MD, Physician-in-Chief, MGHFC, and Allan M. Goldstein,

MD, Surgeon-in-Chief, MGHFC. Thanks to two special donors, the Demarest Lloyd Jr. Foundation and Brian and Adria Sheth, every new or increased sponsorship to Storybook Ball was matched up to \$500,000.

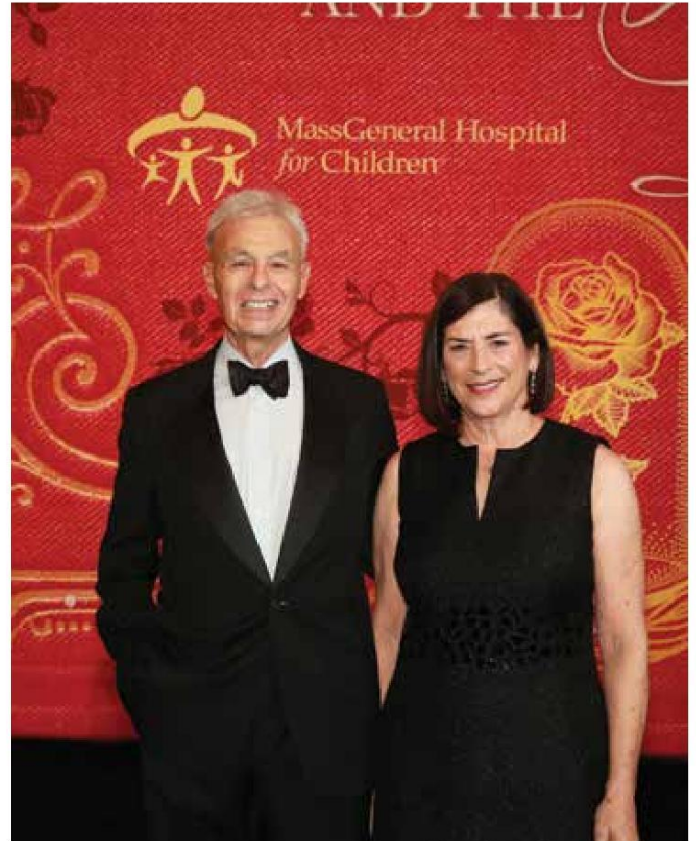
On-hand to share their story were Hopkinton residents, the Robledo family, whose daughter Reese (8) is being treated at the MGHFC Food Allergy Center for her multiple life-threatening food allergies. Reese is currently participating in a clinical trial, and findings from that trial will contribute to furthering the knowledge of food allergies,

for which there is currently no known cause or cure.

The evening with about 500 black-tie guests included dinner by The Catered Affair, a live auction emceed by Lenny Clarke, dancing by DJ Chris Roxx and games, where winners took home prizes from luxury brands like Blank Label, bloomingdale's, Capo, Lincoln, Loco, Paramount & Stockyard Restaurants, Daniel Doke Photography, DevotionaLuxe, North River Outfitter, PUMA, REMY, Rue La La, and Trincherro Family Estates.

Since 2000, the Storybook Ball has raised

more than \$28 million for research initiatives and patient care programs at MGHFC. Proceeds from Storybook Ball over the past decade have allowed MGHFC to provide extraordinary care to the youngest patients and their families; to recruit and support the best physicians, surgeons and researchers; and to speed the development of new technologies and cutting-edge research that can transform clinical approaches locally and globally. Visit www.storybookball.org for more.



(Top Left) Demi Isenstadt, Sonja Kelly, Dr Ronald E Kleinman, Paige (Bottom Left) Christopher and Aliya Page. (Right) Dr Ronald and Martha Kleinman. Photos by Matt West

Dog Lady

Continued from page 2

Dear Doris,

From your description of previous pets, Dog Lady opines you're not afraid of keeping a dog's dog—big hairy huskies, shepherd-mixes. And, really, every dog has its inner lap dog. You can always find a cur to snuggle.

You are making a great start by looking at rescue and shelter dogs. It's an excellent idea to give a cast-off creature a fresh start. Terrier-

mixes are adorable, very dogged, compact-sized and apt to be scary smart.

You can do all the research in the world; you can decide what works for you and what doesn't. Ultimately, the only thing that matters is your gut reaction to a hairy mug and the hairy mug's reaction to you. Cheers to you for going about the dog search in such a sane, deliberate manner.

To ask a question, write askdoglady@gmail.com

Get local and advertise your property in the *South End News*.

Call Jeff at (617) 464-7280 ext. 202 or email: sales@southendnews.com.





It's that weekend again.

Adjust the clocks.

Check the smokes.

Dog still goes to the park.



JJBodner

Insurance Agency of Boston

8 Clarendon Street Boston 02116 617-437-9400 jjbodner.com

auto • home • business • condo associations

Anoush'ella celebrates its opening success

BY MICHELE D. MANISCALCO

South Enders eagerly awaited the opening of Anoush'ella, 35 West Newton Street, since the spring, and the new Armenian-Lebanese addition to the neighborhood has won over the neighborhood since its September 12 opening with enticingly fresh ingredients, a unique spin on Middle Eastern classic dishes, a warm yet sleek design and gentle pricing.

South Enders have responded with booming patronage and rave on-line reviews, and last week the restaurant received a nod on Zagat's Top 10 Hottest Restaurants in Boston list. Owners Raffi and Nina Festekjian feted their success on Wednesday, October 18 with about 50 friends, abutting residents, local chefs, members of the media and neighborhood leaders.

The restaurant's large, front room and patio remained open to diners while the party went on and patrons, party guests and the Festekjians mixed and mingled throughout

the evening at the long, main dining table featuring geometric-shaped compartments filled with colorful, key ingredients such as Aleppo pepper, za'atar (thyme seasoning), black walnuts, rice and bay leaves covered in glass. Elsewhere, the restaurant has bar seating, banquette seating in the back room and a cozy alcove for small groups.

A major innovation is the fully automated order and payment system: no cash accepted. The restaurant, designed by Nina Festekjian with Jim Platt of Platt Associates, seats approximately 60 indoors and 34 on the patio. The restaurant's name is an Armenian expression that means "May it be sweet", wished from hosts to diners.

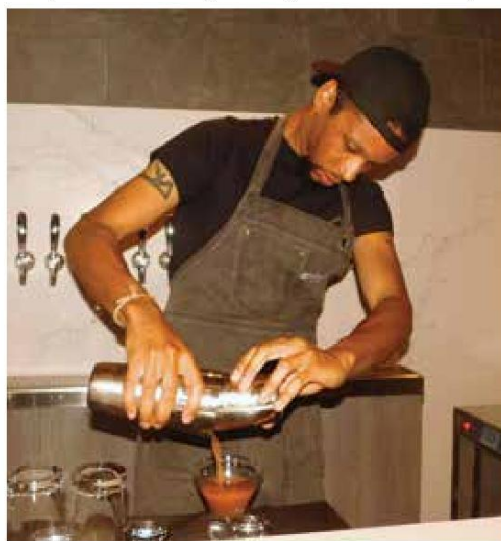
Guests enjoyed a buffet of red lentil kofta with tomatoes, cucumber and parsley; overnight-braised beef; za'atar chicken topped with secret sauce; and small cups of hummus, baba ganoush and walnut harissa (North African hot-pepper paste).

The Festekjians satisfied partiers' sweet teeth with rice pudding with pomegranate,

blueberry and strawberry; and sweet labneh with mango, chocolate and pistachio. Partygoers toasted the eatery's success with a variety of exotic cocktails including a peach-thyme martini; a jallab martini with date molasses syrup and vodka; the Arak 75 with Arak (Middle Eastern anise-flavored liquor), date molasses syrup and cardamom bitter; the Bloody Anoush-ella with tomato juice, vodka, za'atar and Aleppo pepper; and the Whiskey Grapefruit.

Party-goer Ray Coderre, who is half Lebanese-American, commented, "The thing I like about this is that it's Armenian-Lebanese fusion. It's pretty rad! The cocktails are pretty innovative." Coderre attended with Kristen Uekermann, author of the blog, "The Boston Fashionista".

After approximately six weeks in business, Anoush'ella is expanding its offerings to include brunch from 10:00 AM-2:00 PM on Saturday and Sunday.



Photos by Michele Maniscalco

38 / 43

Publishers:

Jeff Coakley [ext. 202]
Sue O'Connell [ext. 215]

Editor-in-Chief:

Sue O'Connell [ext. 215]
sue.southendnews@gmail.com

Editorial Design Manager:

Daniel J. Raps
danielj.raps@gmail.com

Contributing Writers:

C.D. Hermelin
Michele D. Maniscalco
Jack Maypole, MD
Dog Lady

Display Advertising:

Jeff Coakley [ext. 202]
jcoakley@southendnews.com

Classified Advertising:

classifiedads@southendnews.com

Letters to the editor:

letters@southendnews.com

Calendar listings:

sencalendar@southendnews.com

© 2017 South End News Inc.
PO BOX E14,
Boston, MA 02127
(617) 464-7280; FAX (617) 464-7286

The South End News is a copyrighted publication. Any stories or photos contained herein may not be reproduced in whole or in part without the express written permission of the publisher. The South End News will not assume financial responsibility for typographical errors in advertisements. Questions or complaints regarding advertising must be sent in writing to the billing department within seven days of publication in order for adjustments to be made to the account. We reserve the right to use our discretion in accepting or rejecting advertising copy. South End News is not responsible for damages due to typographical errors, except for the cost of replacing ads that have typographical errors caused by our negligence. South End News is published every Thursday.

www.southendnews.com

[Facebook.com/SouthEndNews](https://www.facebook.com/SouthEndNews)



Letters policy

To be considered for publication, letters must be no longer than 500 words; refrain from extreme personal attacks; be signed and include an address and daytime telephone number. Writers should refrain from making incorrect statements since they may be barred from future issues. Deadline is noon Tuesday for Thursday's paper. To send us letters: Mail to 46 Plympton St., 5th floor, Boston, MA 02118; FAX to 617.464.7286; E-mail: letters@southendnews.com

Halloween

Continued from page 1

There were also kid-friendly parties in parks and other public places including Ringgold Park, Titus Sparrow Park, United South End Settlement's Children's Art Centre and Tadpole, the children's store at 58 Clarendon Street. Union Park was bustling

with costumed families and Rutland Street was closed between with longtime resident Richard Shibley, wearing a fez and a black robe, grilling and giving out free hot dogs.

Children flocked to the Boston Fire Department Engine 22 at 700 Tremont Street, while a traffic officer wearing a gorilla mask directed traffic for the aid of trick or treaters.



Photos by Michele Maniscalco

Lehr

Continued from page 1

manhunt was on to catch the murderer, and a young African-American man was quickly apprehended, charged, and—wrongly—convicted of the crime.

Dick Lehr, a former reporter for the Boston Globe's famous Spotlight Team who investigated this case for the newspaper, now turns the story into 'Trell, a page-turning novel about the daughter of the imprisoned man, who persuades a reporter and a lawyer to help

her prove her father's innocence. What pieces of evidence might have been overlooked? Can they manage to get to the truth before a dangerous character from the neighborhood gets to them?

More Than Words is a non-profit social enterprise that empowers system-involved young adults to take charge of their lives by taking charge of a business.

More Than Words is located on the 2nd floor at 242 East Berkeley Street in Boston, MA.

www.MTWyouth.org



Affordable Rental Housing
9 Williams Street Rental Housing
9 WILLIAMS STREET, ROXBURY, MA 02119

9 Williams Street Rental Housing will accept applications for 21 units:

TYPE	Studio	1 BR	2 BR	3 BR
Section 8-FPV from 89-1A, 30% AMI	0	3*	3	0
	See below*	See below*	See below*	See below*
60% AMI	0	1	1*	2
Gross Rent**	N/A	\$1,764	\$1,396	\$1,611
70% AMI	0	0	4	1
Gross Rent**	N/A	N/A	\$1,445	\$1,430
UNIT TOTALS	0	4	14	3

*Preference for persons with mobility impairment: 1 (1br FPV 89A unit) 1 (2br 60% AMI unit)
 **Rents are based upon adjusted gross income. Section 8 available through the Boston Housing Authority (BHA). To apply, households should contact the BHA, 32 Chauncy Street, Boston, MA 02111
 **Gross Rent includes utility allowances with tenant payment for heat, hot water, and electricity.

Use and Occupancy Restrictions Apply
 Applications may be requested by email at williams@bha.com or picked up during the following dates and times at
207 Dudley Street Roxbury MA 02115 (Management Office)

Reasonable accommodations made
 Applications available **Monday-Friday 10/18/17 - 10/27/17 & Monday 10/30/17**
 Hours: 9 a.m. - 4 p.m.
 Saturday 10/21/17
 Hours: 10 a.m. - 1 p.m.

AN INFORMATION SESSION WILL BE HELD AT 464 TREMONT STREET BOSTON MA
 (Castle Square Apartments Community Room)
THURSDAY OCTOBER 19, 2017 6PM-8PM
 Applications will be available at the information session.

For more information or an application to be sent by mail or alternate means, call Madison Park Management Office during the application period of 10/16/17 to 10/30/17. Phone: 617-445-8338

Deadline for completed applications to be in the Lottery is in person at the Management Office by 4:00pm 11/13/17 or mail postmarked by 11/13/17.

SELECTION BY LOTTERY
 Two units have a preference for persons with mobility impairment.
 Preference for households of at least one person per bedroom.
 Maximum (voucher) units by household:

HH Size	60%	70%
1 Person	\$43,440	\$50,730
2 Persons	\$49,980	\$57,950
3 Persons	\$55,960	\$65,200
4 Persons	\$60,960	\$71,400
5 Persons	\$67,020	\$78,200
6 Persons	\$72,000	\$84,000

Voucher Holders not subject to minimum income requirements or rent at payment standard

Contact (617) 445-8338 or TDD: 1-800-439-2370 for Reasonable accommodations regarding the application process or to request an application by mail. Translation assistance is available.
 2101 Washington Street Rental Housing is an equal housing opportunity
 Managed by WinHousing

CAN'T WAIT UNTIL THURSDAY FOR THE NEXT ISSUE OF THE SOUTH END NEWS? HEAD OVER TO Mysouthend.com

PARKER HILL APARTMENTS
The Style, Comfort and Convenience you Deserve!

- Heat and Hot water always included • Modern laundry facilities • Private balconies/some with city views • Plush wall to wall carpet • Adjacent to New England Baptist Hospital • Secured Entry • Elevator Convenience • Private Parking • Near Public Transportation and much more...

1 Bedroom available for \$1,600

Call today for more details and to schedule a visit: 888-789-8813

ASK ABOUT OUR MOVE-IN SPECIAL & NO SECURITY DEPOSIT PROGRAM

The "Dog" Bites

The Curious Incident of the Dog in the Night-time,
 SpeakEasy Stage Company, Roberts Theatre, Calderwood Pavilion, Boston Center for the Arts, through November 25.
 bostontheatrescene or 617-933-8600

BY JULES BECKER

There is something as curious about the play *SpeakEasy* Stage is currently staging at the Calderwood Pavilion as about a detail of the 1892 Arthur Conan Doyle short story "Silver Blaze" to which it alludes. The play in question, "The Curious Incident of the Dog in the Night-time" by Simon Stephens, never actually refers to autism though protagonist Christopher Boone clearly seems challenged by Asperger's Syndrome. Many theatergoers at the Opera House tour press opening of this Tony Award winner earlier this year followed Christopher's singular odyssey with a standing ovation. Even so, this critic actually found the bark and bite of the intimate SpeakEasy Stage production more fully affecting than those of the striking tour.

Sherlock Holmes buffs may know that the legendary sleuth deduced that the dog in his case did not bark because it did not encounter a stranger. By contrast, the Swindon, Wiltshire dog Wellington in the title of the play and the 2003 Mark Haddon novel on which it is based does not bark because it is dead. Math savant Boone sets out Holmes-like to find its killer. Christopher's quest eventually challenges his social skills as well as his deductive powers. If Boone discovers the identity of the killer by the end of the first act, more personal mystery occupies his second act experiences. That more personal second act finds Christopher struggling with experiences that would rarely daunt other commuters—namely, traveling on the British underground (subway), working with local maps and dealing with London streets. Eventually, Boone's accom-

plishments include doing very well on advanced math level testing as well as reaching his now London-based mother Judy and a pivotal moment of truth with his warring parents. A surprise gift from his father Ed elicits audience 'oohs' that savvy theatergoers may find somewhat kitschy, but Stephens play nevertheless stands tall as a call to understanding about not only autism but also respect for different perspectives about life and people.

This critic empathized more with Christopher and his journey as staged by SpeakEasy Stage artistic director Paul Daigneault at the Roberts Theatre—here reconfigured to give audience members more of a you-are-there experience. Christopher and Justin Swader's sets not only include the math detail—including extensive chalked formulas and Venn diagrams—called for all around the performance space but also a grid-like backdrop for which designer Jeff Adelberg provides color-code lighting that matches and highlights aspects of Boone's odyssey as well as details connected with his parents, mentor Siobhan, Swindon neighbors and other people that either challenge him or support his efforts during the play. Essential to the production's insight-driven approach is Yo-El Cassell's choreographed movement—especially for ensemble players—that goes a long way to clarify Christopher's perceptions and actions in response to his challenges.

Director Daigneault sustains this clarifying approach with a strong cast. Purcell captures Christopher's on-going ordeal recording his successes and setbacks in solving the killing of the dog as well as navigating his way through the



Elliott Purcell as Christopher and ensemble performers in "The Curious Incident of the Dog in the Night-Time" (Courtesy Nile Scott/SpeakEasy Stage Company)

streets of London. He may not seem to shriek as frantically as Adam Langdon did as the tour's Christopher—a performance choice some may prefer—but this gifted actor's performance is fully convincing and involving. Jackie Davis has the right combination of warmth and tough love as paraprofessional Siobhan who guides Christopher in employing his own rhythms regarding society and his own behavior. Laura Latreille finds Judy's maternal caring as well as her weakness in relationships. Craig Mathers catches Ed's volatility and mitigating moments of feeling. Tim Hackney is properly unsympathetic as Judy's married romantic interest Roger. Versatile local talents Christine Power, Cheryl McMahon, Gigi Watson, Alejandro Simoes and Damon Singletary provide alternating tension and moments of humor in a variety of roles in Swindon and London.

In a signature moment of observation, Christopher admits, "I find people confusing." By contrast, Daigneault and company make his formidable odyssey in "The Curious Incident of the Dog in the Night-Time" remarkably clear.

Get local and advertise your property in the *South End News*.

Call Jeff at (617) 464-7280 ext. 202 or email: sales@southendnews.com.

SERVICE GUIDE

CLEANING

Spring Cleaning
 For All Seasons

- Trustworthy cleaning services to meet your needs
- Houses, apartments and commercial
- Schedule that works best for you, weekly, bi-weekly, or monthly
- All routine housework, plus special clean-up jobs
- Owner supervised cleaning crew and ensures quality
- Excellent references and competitive rates



Cleaning by Judy
617-501-9645

Kelley

Continued from page 1

Campaign's (HRC) first Youth College for Campaign Training, HRC is the nation's largest lesbian, gay, bisexual, transgender and queer civil rights organization. HRC sent Kelley to work on President Bill Clinton's Whistle Stop Tour in Royal Oak Michigan. He returned to his job at NWA a changed man.

Kelley went on to serve as former Mayor Tom Menino's South End and Bay Village Neighborhood Coordinator and as the Liaison to the LGBT Community.

The District 2 seat has historically been held by a South Boston resident. James Kelly from 1984–2007, and Bill Linehan from 2007–2017. While the other candidate in the race, Ed Flynn, son of former Mayor Ray Flynn and, no surprise, a South Boston resident, is capable and reliable public servant, with a strong history of constituent services, the district also needs thoughtful and visionary representation.

That's why South End News endorses Mike Kelley for District 2 Boston City Council.

Mayor Walsh has more work to do

There is a lot that Mayor Martin J. Walsh has done right. Boston has more housing units. Boston has become a city of "Yes", attracting General Electric, and inviting Amazon to bring their second headquarters to Boston. Boston Public Schools have a new superintendent, and more learning opportunities for students.

And City Hall finally has voicemail, a data-driven approach to constituent services, and a new website.

While Walsh deserves criticism for Boston's bid for the Olympics, and The Grand Prix of Boston fiasco, these missteps are a symptom of his openness to new ideas and opportunities for the city.

Walsh's challenger, City Councillor Tito Jackson, has done an exceptional job articulating the areas where Walsh could do better. There has been a housing boom, but not in all neighborhoods. Crime and violence plague some parts of the city. Justice and equality for many of Boston's minority communities is not moving forward fast enough. (Last month, the Boston NAACP released a "report card" for Mayor Marty Walsh. There were no A grades, but five F grades.)

Walsh has earned your vote for another term, and the opportunity to better express his vision for the Boston Public Schools, increasing affordable housing, addressing crime, and advancing social justice issues.

South End News endorses Mayor Marty Walsh for a second term.

Kim Janey for Boston City Councillor, District 7

Kim Janey is a children's and education activist with a proven track record of advocacy in the community, and was born and raised in the district. She served on Massachusetts Women's Political Caucus, the Boston Ward 12 Democratic Committee and is a founder of the voting rights group Mass-VOTE, and served on the board of directors for 10 years. She is an active member of the Boston NAACP and serves on its education committee.

Janey will be a great addition to the council, working on issues important to the Boston Public School system, housing, public safety.

The South End News endorses Kim Janey for Boston City Councillor, District 7, which includes Roxbury and including parts of Dorchester, Fenway, Jamaica Plain, and the South End.

At-Large City Council

South End News endorses incumbents Michelle Wu, Ayanna Pressley, Michael Flaherty and Annissa Essaibi-George for re-election to the Boston City Council.

South End News

Service Guide Ads Get Results.

617.464.7280 • sales@southendnews.com

SERVICE GUIDE

PLUMBING • HEATING • HVAC

S.G. Harold Plumbing, Heating & AC

Specializing in Viessman Boiler
Home Heating Repairs & Service
Unico Air Conditioning • Radiant Floor Heating

Boston 617-696-2400
Unprecedented Service Tailored To You
MA Lic # 10589

ROOFING

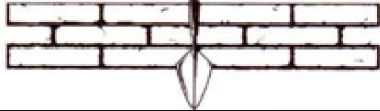
McDonnell Roofing Co. Roofing Specialist

Fully Insured
Slate and Copper Work - Rubber Roof Systems
Shingles and Gutters - Repairs - Lic. Contractor Reg. #100100

617-288-3448
Free Estimates • Over 40 years of experience
McDonnellRoofingBoston.com

MASONRY

R. BUCKLEY MASONRY



Fully licensed and insured
BBB accredited

REPOINTING
RESTORATION
BASEMENTS
URBAN LANDSCAPE
DESIGN/BUILD
CHIMNEYS
STEPS
CONCRETE
STONE
BRICK

RBUCKLEYMASONRY@YAHOO.COM
617-283-6691
WWW.RBUCKLEYCONSTRUCTIONINC.COM
FREE CONSULT AND ESTIMATES

Letters Policy

The South End News welcomes letters to the editor. All letters must be signed and accompanied by a mailing address and phone number.

e-mail: letters@southendnews.com | fax: 617.464.7286

BRUNO GUERRIERO CONSTRUCTION, INC.

Water Proofing Solutions
Basements • Facades • Chimneys



Emergency Repairs
Roofs & Walls • Clean Outs

COMPLETE MASON CONTRACTOR
Custom Brick, Stone Work & Brick Pavers
ALL TYPES OF REPAIRS AND RESTORATIONS

Flood Damage Repair • Brownstone Repair • Stairs Restored • Foundations

BrunoGuerrieroConstruction.com • Brunosworld@comcast.net

HIC
REG#
268196

FULLY INSURED

MENTION THIS AD, GET 10% OFF

(800) 444-5476

FREE ESTIMATES



MASONRY



P. Stones Contracting, Inc.

Specializing in Historic Restoration,
Brick Repointing, Brick, Block, Stone,
Basement Floors, Caulking & Waterproofing.

Ornamental window sills, window headers and moldings.
Fully licensed and insured. 15 years of satisfied customers and referrals.

Office: 781-848-6922 • Fax: 781-848-6923
Cell: 617-592-0850 • pstonescontracting@hotmail.com

MASONRY

Rynne Masonry, Inc

20 Years of Experience Working with Clients in the South End
Specializing in all types of Brownstone Restoration

Brickwork • Repointing
Step Repair (Rebuild, Restore and Resurface)
Chimney Repair • Basement Flood Repairs

Fully Insured and licensed. Please call for references and work samples.
Francis Rynne 617-510-2775 or 617-783-0516

ELECTRICAL



D'S ELECTRIC

PROVIDING QUALITY
ELECTRICAL SERVICES
to the BOSTON AREA

Residential & Commercial

Free Estimates

24 Hour Service

Dedicated to Customer Service Since 1971

617.542.2000
www.ds-electric.com

Mass Licence #14580A

CONSTRUCTION • GENERAL • REMODELING

The Dependable Handyperson

FINE PAINTING AND REFINISHING
SMALL REPAIRS AND RENOVATIONS
DECK AND GARDEN WORK

Call Jean at 617-236-1795
dependablehandy@aol.com

DESIGN

www.lynngrahamdesigns.com
617.460.2532 • info@lynngrahamdesigns.com

event invitations • save - the - dates • wedding programs
custom wedding invitations • wedding menus • escort cards
social stationery • address labels • announcement cards

lynn graham designs

Get local and advertise your
property in the *South End News*.

Call Jeff at (617) 464-7280 ext. 202
or email: sales@southendnews.com.



The people depicted here are models. Their image is being used for illustrative purposes only.

We are the future
of the **LGBT**
community.



“The world still has its challenges but things are getting better. From the way we first met on line to marriage equality to our daughter's upcoming Quinceañera our life together is more fulfilling every day. We keep up with events and entertainment on EDGE, because that's where we see our future at its brightest.”

EDGE MEDIA NETWORK
the future of lgbt media

edgemedianetwork.com



Vote November 7th



**Vote
Mike Kelley
#1 on the
ballot.**

**Mike
Kelley**
★★★★★★★★★★★★★★★★
DISTRICT 2 CITY COUNCIL

**A True Progressive
for Today's Boston**

Paid for and authorized by the Kelley Committee



**“Someone
who heals.”**

Rosalie Allain-Morris, Master's Candidate
School of Psychology and Counseling

Rosalie knows who she
wants to be. Do you?

With a great faculty, flexible
programs, affordable tuition,
and campuses across the state
– and online – Cambridge
College is the right place to
become who you really are.

CambridgeCollege.edu
1.800.829.4723

 **Cambridge College**

Where you come to be.

A non-profit college. EST. 1971