

## Clark elevated

SUBMITTED BY PATRICK O'CONNOR

Organist Richard Clark smiles for the camera after leading the music at his first Sunday Mass at the Cathedral on September 16th. He has been appointed music director and organist at the Cathedral and Director of Music for the entire Archdiocese. He was previously organist and music director at St. Cecilia Parish in the Back Bay since 1989. He earned degrees at Berklee College of Music and the Boston Conservatory. He currently lives in Milton with his wife and four children and belongs to St. Agatha Parish.



Richard Clark

## ASK DOG LADY



### Advice on Pets, Life, Love

BY MONICA COLLINS

Dear Dog Lady,

I adopted a mixed breed dog—Daisy—two years ago with the

understanding the dog was mellow and got along with other animals. Nothing could be further from the truth. My 11-year-old Shih Tzu mix, Penny, has been bullied (and physically attacked more than once) and my cat is living in the attic and can't come out until Daisy is crated at night. Daisy is food aggressive and possessive with everything—toys, my lap, attention to my other dog, etc.

I love Daisy. She's sensitive, loving, smart, and athletic. But I've tried for two years to make this relationship work and it just isn't and I'm tired of being stressed out. I think I have to rehome Daisy but I have no idea how to do that. Also,

it makes me feel like such a failure. Daisy had been surrendered once and I promised her I wouldn't give up on her, but I'm truly at the end of my rope.

Do you have any advice for me?

—Kathy

Dear Kathy,

Yes, talk to your veterinarian. She or he can also refer you to a certified dog behaviorist who will further advise you if there's any hope for you and Daisy. Certainly, if Daisy has all the attributes you ascribe to her—particularly the "loving" quality—there should be optimism she

Continued on page 3

## Beyond the Mile

Problems of homelessness and drug abuse exploding beyond Methadone Mile, councilors say

COURTESY ADAM GAFFIN  
WWW.UNIVERSALHUB.COM

The City Council agreed on Wednesday, September 12, to bring

in city and state public-health experts to figure out what to do about increasing amounts of problems they say are happening from Dudley to Andrew because of the continued shutdown of the Long Island shelter and treatment programs.

The proposal for a formal hearing on the issue was sponsored by Councilors Kim Janey (Roxbury), Frank Baker (Dorchester) and Ed

Flynn (South Boston, South End, Chinatown, downtown)—whose neighborhoods converge along the Methadone Mile on Melnea Cass Boulevard and Massachusetts Avenue.

Janey said the longstanding problem there has spread down Blue Hill Avenue and to Edward Everett,

Continued on page 3



(Left) Deputy Chief Secretary of Boards and Commissions, Ed Palleschi. (Right) United South End Settlements President & CEO Maicharia Weir Lytle

## USES' Weir Lytle appointed to board

SUBMITTED BY USES

Earlier this month, USES President & CEO Maicharia Weir Lytle was appointed to the State Workforce Development Board, which advises the Governor on building a strong

workforce development system aligned with state education policies and economic development goals.

Maicharia was sworn in as a member of the board by the Deputy Chief Secretary of Boards and Commissions, Ed Palleschi, at a private ceremony at the State House.

## Ellis names new CEO

SUBMITTED BY ELLIS

The Board of Directors of Ellis is pleased to announce today that it has selected Lauren Cook as the new Chief Executive Officer replacing longtime CEO Leo Delaney who is retiring after leading the organization for 32 years. Cook will assume

her new role on October 1, 2018.

Cook joins the organization with over 15 years of nonprofit leadership experience. Throughout her education and career, Lauren has focused her efforts on the inclusion and advancement of aspiring

Continued on page 3

Online

Check us out online at  
[www.mysouthend.com](http://www.mysouthend.com)  
[twitter.com/SouthEndNews](https://twitter.com/SouthEndNews)  
[facebook.com/SouthEndNews](https://facebook.com/SouthEndNews)

Online





## Nursing home or your home? Know your options.



One of the highest-rated senior health plans in Massachusetts for people 65 and older.

If you're 65+ and eligible for MassHealth Standard, call now for this free brochure about an important health plan option.

Commonwealth Care Alliance® is dedicated to helping you live safely in your own home for as long as possible. 65% of CCA Senior Care Options members actually qualify for a nursing home, but continue living independently at home with our comprehensive care and support. Our plan provides MassHealth Standard benefits and MORE – at \$0 cost to you. And you can keep your own doctor!\*

Learn more today.

**Toll-Free: 855-213-0015 (TTY 711)**

8 am – 8 pm, 7 days a week

FAX: 617-830-0534

CommonwealthCareSCO.org

30 Winter Street, Boston MA 02108

\*As long as the doctor is part of the CCA Provider Network



H2225\_2018\_PA0009 Approved

© 2018 Commonwealth Care Alliance

Commonwealth Care Alliance (CCA) Senior Care Options Program (HMO SNP) is a Coordinated Care plan with a Medicare contract and a contract with the Commonwealth of Massachusetts/EOHHS Medicaid program. Enrollment in the Plan depends on contract renewal to provide benefits for both programs to enrollees. Enrollment is voluntary. This information is not a complete description of benefits. Limitations, copayments, and restrictions may apply. For more information, call CCA Member Services at 866-610-2273 (TTY 711), or read the Plan Member Handbook for a complete list. Benefits may change January 1 of each year. You must continue to pay your Medicare Part B premium if it is not paid on your behalf. CCA complies with applicable Federal civil rights laws and does not discriminate based on race, ethnicity, national origin, religion, gender, gender identity, sex, age, mental or physical disability, health status, claims experience, medical history, genetic information, evidence of insurability or geographic location. This Plan is available to people who live in the plan's service area, are aged 65 or older, and have Medicare and MassHealth Standard or just MassHealth Standard alone. **ATENCIÓN:** Si habla español, tiene a su disposición servicios gratuitos de asistencia lingüística. Llame al 866-610-2273 (TTY 711). **ATENÇÃO:** Se fala português, encontram-se disponíveis serviços linguísticos, grátis. Ligue para 866-610-2273 (TTY 711).

## Pet of the Week

**Bruce**  
**ANIMAL RESCUE LEAGUE of BOSTON**

A champion for animals

Meet **Bruce**, a Cuban tree frog who hitched a ride from Florida on a shipment of flowers to a local florist. We need to see a photo of the habitat he will be living in prior to going home. A 15-20 gallon tank at about 40-60% humidity will suit. Cuban tree frogs grow to 5 inches. They don't really enjoy being held and taken out of their cage and will attempt to slip out of your hands and escape. Keep handling short and wash your hands well. A Cuban tree frog will eat crickets, has a large appetite, and should be fed as much as it will eat in 15-20 minutes three times a week. His adoption fee is \$10. For more information about **Bruce** or other adoptable animals at the Animal Rescue League of Boston, please contact us at (617) 426-9170 or visit us online at [arlboston.org](http://arlboston.org).

**Boston Animal Care & Adoption Center**  
10 Chandler Street, Boston MA 02116  
Open Tuesday – Saturday, 1-6:30PM  
Closed Mondays and Holidays

**STEVEN COHEN**  
Team  
Pet of the Week Series Sponsor

## Crime

# Officers Arrest Two Suspects Caught Distributing Heroin

SUBMITTED BY BPD

At about 12:15 PM on Wednesday, September 12, 2018, officers assigned to the Citywide Drug Control Unit arrested two males as part of an ongoing investigation in the area of Massachusetts Ave and Albany Street in the South End.

As part of the continued efforts to reduce drugs on the streets of Boston, officers arrested Jhonny Gonzalez, 33-years-old, of Boston and Josue Cotto, 39-years-old, of Boston. Gonzalez is charged with Possession with Intent to Distribute Class A Drugs, Distribution of Class A Drugs, and Conspiracy to Violate Drug Laws. Cotto is charged with Distribution of Class A Drugs and Conspiracy to Violate Drug Laws.

Further investigation revealed Gonzalez to have multiple warrants for charges including Trafficking 200 Grams of Class A Drugs, Trafficking Cocaine, and Distribution of Class A Drugs.

Both suspects are expected to be arraigned in Boston Municipal Court.

Use the **South End News** Classifieds to find your...

...amazing apartment, Cape Cod cottage, marvelous massages, super sleeper sofa, dedicated dog walker...

BUY AND SELL  
IN THE CLASSIFIEDS!

617.464.7280

classifiedads@southendnews.com

## Ellis

Continued from page 1

young people and their families. Lauren, most recently has been a member of the executive leadership team at Boys & Girls Clubs of Boston (BGCGB) where she led its program development and extensive community partnerships. Prior to joining BGCGB, Lauren was Executive Director of Healthworks Community Fitness, which operated two fitness and health education centers for women and children in Dorchester.

"We are all very grateful to have found our new leader who is deeply passionate about early education and youth," said Larry Hughes, Ellis Board Chair. "The Board and I are confident Lauren represents the next generation of extraordinary leadership for Ellis. We are most excited to do all that we can to support

her in her new role."

"I'm thrilled to join such an extraordinary organization and team, and I look forward to serving the children and families of the Ellis community," said Cook. "Ellis is a leader in delivering the highest quality early education, care, and youth development programs, and it reflects my own interests and values. It's an honor to have the opportunity to devote my professional energy and expertise to such a meaningful organization."

"This is an exciting time for Ellis," said Delaney. "Lauren brings a distinctly special skill set and passion for the organization's work. I look forward to doing everything I can to support her during this transition."

Ellis is a 133 year-old nonprofit early education program in Boston's South End providing services year-round focusing on infant, toddler, pre-school, and school-age programs.

## Mile

Continued from page 1

Andrew, Worcester and Dudley squares.

Although the city made "significant progress" getting folks into shelters and treatment after the sudden shutdown of the Long Island Bridge in 2014, more needs to be done, she said. "A walk along Melnea Cass Boulevard or through Dudley Square or on Blue Hill Avenue can be very shocking," she said, pointing to visible drug use, sexual abuse and violence.

She said a recent increase in police presence in Dudley Square has eased problems there, but added that that just pushes the problem somewhere else. "We cannot just put a Band-Aid on a bullet wound," she said, adding that in addition to police, public-health departments need to help city leaders come up with an answer.

Baker said the state and nearby communities have to do their part as well - and said

he is tired of Boston becoming a dumping ground for suburban problems. "Communities are literally giving their people bus tickets to Boston," he said, adding that he will ask apparently homeless people along Dorchester Avenue where they're from and often hears places such as New Bedford and Fall River and even New Hampshire and Maine.

"We need state help," he said.

"It's critical that the bridge be re-opened," Flynn, formerly a Suffolk County probation officer who made weekly visits to the facilities there, said.

At-large councilors Annissa Essaibi George - who chairs the committee that will hold the hearing - and Ayanna Pressley, said whatever fixes are proposed need to be made with compassion for the street people themselves. Pressley said some people become homeless after they're unable to pay for particular medical care. And once on the streets, people may not want to go into shelters because they don't feel safe there, she said.

## Dog Lady

Continued from page 1

can eventually live peacefully in your kingdom.

Maybe you need to try different behavior to bring out her better aspects. Feeding animals separately is usually mandatory in any household with multiple pets. But maybe there are other strategies to foster togetherness.

Ask Dog Lady urges you not to give up too soon.

Dear Dog Lady,

I am hoping you like gossip as much as I do but I'm fascinated by the story out of Hollywood about two heavyweights who were living together until she supposedly stepped out on him with a film director. Now, according to the online rags, these two stars are fighting over who gets custody of Bruno, the dog. Apparently, he brought Bruno into the relationship but she nursed the puppy Bruno back from Parvovirus. She wants joint custody. What do you think in a case like this?

— Marylou

Dear Marylou,

A dog should never be used as a pawn in a breakup, especially in a fractured fairytale when both parties have the money to deal with things civilly. In this case, the stars must have adopted the dog together from a shelter. If Bruno had a nasty case of Parvovirus, the dog had a bad backstory. Stray dogs found on the street would be prime candidates for parvo. And the lady star has every reason to lay a claim to Bruno since nursing a dog back from Parvo involves lots of time and tender loving care.

This case is a prime example of when joint dog custody could work beautifully. Both stars probably have the resources to care for Bruno adequately. They can buy all the good food, beds, toys and treats. They can afford the veterinary care for dog - and they should use only one veterinarian instead of "his" and "hers" since this would be much better for Bruno.

The only thing holding these all-too-humans back is their own anger at each other. And, as Dog Lady is wont to preach - human follies should never get in the way of responsible pet tending.

Write: askdoglady@gmail.com

## RENTAL OPEN HOUSE 9/23

12pm-3pm at 482 Columbus Ave!

Majestic 1 br \$3250 a mo located in the heart of the South End! Sun-drenched parlor level unit with original detail! Stunning kitchen and bath! Available NOW! COME SEE THIS BEAUTIFUL SOUTH END RENTAL IN PERSON!



Email MrChaddles@gmail.com or call 857-222-6677

Your Neighborhood.  
Your Website.

MySouthEnd.com

## 88 Wareham Condominiums 88 Wareham Street, Boston MA (South End) BPDA Income Restricted Housing Lottery

4 New BPDA Income Restricted Condominiums

Unit #	Type	Price*	Approx Sqft	Income Limit
201	1BR	\$296,900	644 sqft	90% to 120% AMI
306	Studio	\$250,900	498 sqft	90% to 120% AMI
206	Studio	\$173,200	498 sqft	Up to 90% AMI
305	1BR	\$182,100	584 sqft	Up to 80% AMI

The Maximum Income Limits for Households for the 80% AMI unit are as follows:

1 Person - \$60,400\*; 2 Persons - \$69,000\*;

The Maximum Income Limits for Households for the 90% AMI unit are as follows:

1 Person - \$67,900\*; 2 Persons - \$77,600\*;

The Maximum Income Limits for Households for the 120% AMI units are as follows:

1 Person - \$90,550\*; 2 Persons - \$103,500\*;

\*Income Limits subject to change when the BPDA publishes the annual Income Limits

From Sept 27 to Oct 8 th , 2018 lottery applications can be requested by phone (617.782.6900) or email (88Wareham.BPDA@sebhousing.com). Applications may also be picked up at the South End Branch of the Boston Public Library (685 Tremont Street) on the following dates: Thurs Sept 27 (1 pm to 5 pm), Saturday Sept 29 (10 am to 2 pm), Monday Oct 1st (1 pm to 5 pm), Tuesday Oct 2nd (4 pm to 8 pm), and Wed Oct 3 (1 pm to 5 pm)

If emailing, you will be sent a link to complete a request form. If calling, you MUST provide your mailing address even if you only want to be emailed an application (this is to satisfy BFHC compliance).

Online Applications (link will be provided upon request) can be completed and submitted up until 4 PM on Oct 16, 2018

The deadline for application drop off at the SEB Office is 4 pm on Oct 16, 2018 (office is open from 10 AM to 4 PM).

Completed applications can also be mailed to the SEB Office but must be postmarked by Oct 16, 2018.

The SEB Office is on 257 Hillside Ave, Needham, MA 02494.

Selection by lottery.

Asset, Use & Resale Restrictions apply.

Preference for Boston Residents.

Preference for Households with at least one person per bedroom.

Preference for First-Time Homebuyers.

88 Wareham is a smoke free and pet friendly community.

For more information or reasonable accommodations for persons with disabilities or those with limited English proficiency, call 617.782.6900



Get local and advertise your property in the South End News.

Call Jeff at (617) 464-7280 ext. 202  
or email: sales@southendnews.com.



# Where we all reside

## “Between Riverside and Crazy”

REV. IRENE MONROE

Stephen Adly Guirgis's 2015 Pulitzer Prize-winning play “Between Riverside and Crazy” now adds to the SpeakEasy Stage Company's illustrious list of performances. With a packed audience at each performance “Between Riverside and Crazy” is a comic drama where Guirgis's characters are raw, complicated, vulnerable and very human. In other words, they are flawed in the ways we all are, and they are broken in places that are all too familiar.

Walter “Pops” Washington, the main protagonist, is a recently widowed tough-talking foul-mouthed elderly black ex-cop who's a Republican. To say he's ornery and a hot mess of contradictions is an understatement. With grit and fierce determination, Pops is battling with the New York Housing Authority to hold on to his spacious Manhattan's rent-controlled apartment on Riverside Drive on the Upper West Side. Also, he is feuding with the NYPD for a hefty settlement to compensate for injuries he sustained when a white cop shot him, rendering him disable and out of work.

Pops's epic battles, however, are further complicated by a motley cast of characters all living with him and can easily be labeled as social misfits: Junior, his son, who's recently released from prison; LuLu, Junior's girlfriend, who says she's pregnant; and, Oswaldo, Junior's friend, a homeless recovering addict. Their struggles to overcome their demons—internal and structural—are as epic as Pops's struggle for survival.

Guirgis's play can be troubling if viewed only topically. For example, critics have talked about Guirgis's use of profanity, suggesting it might be gratuitous. However, I find Guirgis's profundity in his use of profanity. Guirgis who see it as part of his artistic expression explained his use of expletives in the following way: “In between the adjectives and modifiers that



are colorful, [my characters] also say things that are pretty interesting, pretty human and oftentimes, pretty funny.”

Oswaldo explained to Pops why he altered his eating habits, is one such example. And the dialogue is comical.

“The Ring Dings and baloney and Fanta Grape, it turns out, that's what doctors and People Magazine call “Emotional Eating” on my part — on account of I only ate that shit because those foods made me feel “safe and taken care of” back when I was a kid who was never “safe or taken care of”. But now, I'm a adult, right? So I don't gotta eat like that no more, and I can take care of myself by getting all fit and diesel like how I'm doing from eating these almonds and making other healthful choices like I been making. And so, I'm not trying to get all up in your business, but maybe that's also the reason you always be eating pie — because of, like, you got Emotionalisms — ya know?”

Another example, Lulu, and Guirgis's use of stereotypes, that, in my opinion, all the characters are in some way. Lulu is the stereotype of a thick-accented Bronx Latinx scantily clad hoochie-looking sister who has no inclination to work and says she's pregnant. Lulu, however, delivers a line that disrupts the conventional assumptions about her stereotypical appearance.

“I may look how I look, but that don't

mean I AM how I look.”

Moreover, Guirgis's use of humor and profanity throughout the play serves both as a salve and catharsis when touching on thorny and still unresolved present-day social issues, like shooting and killing unarmed black men by predominately white officers, unjust and corrupt tactics of the NYPD, and the swift and rampant gentrification of minority-majority neighborhoods.

While many will think the inspiration for “Between Riverside and Crazy” is the 2014 shooting of Michael Brown in Ferguson, Missouri, and the chokehold death of Eric Garner in Staten Island, New York, the play is actually based on an incident that occurred twenty years earlier when a white officer mistook an undercover black cop for a criminal in 1994.

Unlike today, in 1994, it would have been a lot harder to convince the American public that police shootings and beatings of unarmed black men are rampant and reflect structural racism and implicit bias — albeit the Rodney King cop beating and the 1992 Los Angeles riot was just two years before this incident and aired internationally. Guirgis doesn't have to give his audience any commentary about police misconduct because we are now living in 2018, and the problem is front and center.

Pops's eight-year-old lawsuit against the

*Continued on page 5*

39 / 37

**Publishers:**  
Jeff Coakley [ext. 202]  
Sue O'Connell [ext. 215]

**Editor-in-Chief:**  
Sue O'Connell [ext. 215]  
sue.southendnews@gmail.com

**Editorial Design Manager:**  
Daniel J. Raps  
danielj.raps@gmail.com

**Contributing Writers:**  
Michele D. Maniscalco  
Dog Lady

**Display Advertising:**  
Jeff Coakley [ext. 202]  
jcoakley@southendnews.com

**Classified Advertising:**  
classifiedads@southendnews.com

**Letters to the editor:**  
letters@southendnews.com

**Calendar listings:**  
sencalendar@southendnews.com

© 2018 South End News Inc.  
PO BOX E14,  
Boston, MA 02127  
(617) 464-7280; FAX (617) 464-7286

The South End News is a copyrighted publication. Any stories or photos contained herein may not be reproduced in whole or in part without the express written permission of the publisher. The South End News will not assume financial responsibility for typographical errors in advertisements. Questions or complaints regarding advertising must be sent in writing to the billing department within seven days of publication in order for adjustments to be made to the account. We reserve the right to use our discretion in accepting or rejecting advertising copy. South End News is not responsible for damages due to typographical errors, except for the cost of replacing ads that have typographical errors caused by our negligence. South End News is published every Thursday.

www.southendnews.com  
Facebook.com/SouthEndNews



**Unlock a child's POTENTIAL!**

Students at the Blackstone Innovation School need you to help foster a love of reading that leads to academic success.

Find out how YOU can help at an upcoming info session

Wednesday, August 22, 1:30 PM - 3:30 PM  
South End Library, 685 Tremont St., Boston 02118

RSVP to 617.423.6633 or volunteering@generationsinc.org

LIMITED AMOUNT OF STIPENDS AVAILABLE

GENERATIONS INCORPORATED **EXPERIENCE CORPS**

www.generationsinc.org

**South End News is now on facebook!**

facebook.com/southendnews

**Find us on Facebook**



**Letters policy**

To be considered for publication, letters must be no longer than 500 words; refrain from extreme personal attacks; be signed and include an address and daytime telephone number. Writers should refrain from making incorrect statements since they may be barred from future issues. Deadline is noon Tuesday for Thursday's paper. To send us letters: Mail to PO BOX E14, Boston, MA 02127; FAX to 617.464.7286; E-mail: letters@southendnews.com



# Talent carries Kiss

**Kiss of the Spider Woman,**  
Lyric Stage Company of Boston,  
through October 7.817-585-5678 or  
lyricstage.com

By JULES BECKER

Never underestimate the power of the imagination. The singular fortune of emotionally conflicted gay window dresser Luis Albano Molina in the 1993 Tony Award-winning musical "Kiss of the Spider Woman" is that dictators do. Imprisoned in the show's back story by a fascist Argentinian regime for corrupting a minor, the film-loving protagonist escapes the pain and torture of prison treatment by dreaming of and imagining spell-binding fictional 1940's actress Aurora in many of her greatest roles.

The role of the iconic movie diva—originally made famous by legendary actress-dancer Chita Rivera—ought to be as arresting as that of Molina himself. Surprisingly the latter performance in the thoughtful if unevenly paced season-opening Lyric Stage Company of Boston revival possesses a spirit that tellingly soars higher than the evocation of usually bewitching Aurora.

Unevenness is a word one virtually never associates with gifted director-choreographer Rachel Bertone. Early this year she powerfully captured the vivid and always-timely warnings about hatred and apathy of the Tony-winning musical "Cabaret" in a Moon-box Productions revival that proved one of the season's finest efforts. Even so her staging of fellow John Kander-Freb Ebb gem "Spider Woman"—with Terrence McNally's savvy book—fails to reach that kind of brilliance.

This earnest revival does catch the touchingly evolving interaction of Molina and new Marxist cellmate Valentin Arregui Paz. What it lacks is a full embrace and expression of the gossamer beauty of Aurora's wide-ranging radiance.

Shortcomings aside, Bertone's staging benefits from considerable talent. Eddy

Cavazos in his Lyric Stage debut is a revelation as Molina. His performance sharply moves from Molina's early diffidence and uncertainty about his future to caring and love for Valentin and a willingness to make sacrifices for him. Cavazos also catches Molina's remarkable feeling in the pathos-rich "Mama, It's Me."

Taavon Gamble effectively moves from homophobia to understanding as Valentin appreciates the beauty of Molina's imagination. He properly builds the revolutionary's feeling on "The Day After That." The scene in which Valentin sexually bonds with Molina—who agrees to make calls for him outside the prison—is both moving and tender.

The only real problem is Lisa Yuen's partially realized evocation of the title character and dream-evoking Aurora who appears bewitchingly in Molina's creative cinematic escapes from a tough reality. She has a likeable quality here, but her performance needs to bewitch the audience as much as Aurora's fiery screen work and films do Molina. Yuen's renditions of the title number and "And the Moon Grows Dimmer" should be both haunting and passionate. Her Aurora should weave a spell of gossamer delight around the audience. Here the charms are external rather than all-embracing.

There are satisfying moments from supporting players. Luis Negrón wisely understates the manipulative strategies of the villainous warden as he attempts to identify Valentin's girlfriend and fellow revolutionaries. Johanna Carlisle-Zepeda is properly affecting as Molina's mother. The prisoner ensemble has the right booming solidarity on the anthem-like "Over the Wall." Design talent—notably Marian Bertone's vivid costumes, Franklin Meissner, Jr.'s nuanced lighting and Janie E. Howland's rightly grim prison set—provides its own compensation.

Bertone's revival falls short of her seminal "Cabaret." Still, her probing "Kiss of the Spider Woman" does have moments when it touches the heart with insight about freedom, friendship and love.



Eddy Cavazos, Luis Negrón, Diego Klock-Perez, Taavon Gamble, and Davron S. Monroe in "Kiss of the Spider Woman."

# Michlewitz Coffee Hours Announced

Rep. Aaron Michlewitz (D), 3rd Suffolk District, is gearing up for another round of Coffee Hours for the Fall. This year's Coffee Hour schedule is as follows:

**Saturday, Sept. 22nd 10am-12pm:** CuppaCoffee (57 Traveler St., South End)

**Saturday, Oct. 13th 10am-12pm:** La Colombe Coffee Roasters (745 Atlantic Ave, Leather District)

**Saturday Nov. 3rd 10am-12pm:** Berkeley Perk (69 Berkeley Street, South End)

**Saturday Dec. 1st 10am-12pm:** Location TBD (Downtown Boston)

## Riverside

Continued from page 4

NYPD does not end as he had hoped with a hefty settlement, and he doesn't get the justice he so rightly deserved given his thirty years of service on the force. However, he does keep his rent-controlled apartment, and he does gain new insight and energy about life

that neither the apartment nor a financial settlement could give him. Pop calls it grace.

"Whatever the hell happened that night, it got me to here. And I didn't do nothing to deserve it. You gave that to me. You gave me Grace. "Always be free," right?"

Between Riverside and Crazy runs from Sept. 14 - October 13, at the Calderwood Pavilion at the Boston Center for the Arts, 527 Tremont Street in Boston's South End.

**Get local and advertise your property in the South End News.**

Call Jeff at (617) 464-7280 ext. 202 or email: [sales@southendnews.com](mailto:sales@southendnews.com)

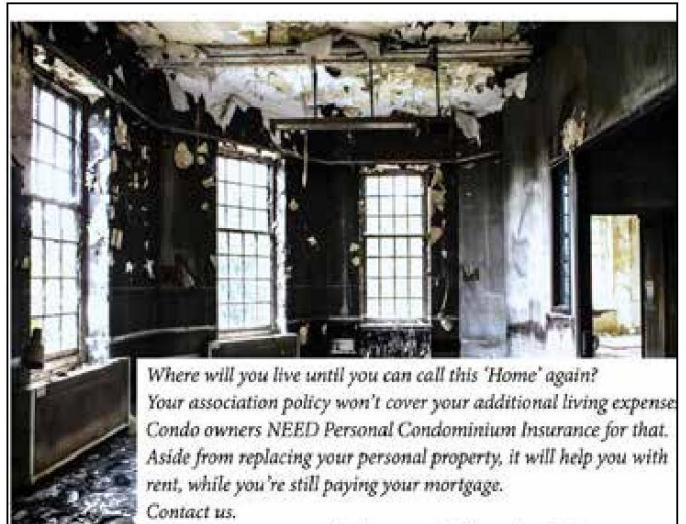


Come by for lunch. Experience our community up close. Try our Bed, Breakfast & Beyond program which allows you a short term stay in a furnished apartment. We'll add warmth, stimulating programs, three chef prepared meals per day and personal assistance.

Contact: Lance Chapman or John Moniz at 617-731-8500 or go to [www.goddardhouse.org](http://www.goddardhouse.org) 165 Chestnut St., Brookline MA



**Inclusive • Warm • Community**



Where will you live until you can call this 'Home' again? Your association policy won't cover your additional living expense. Condo owners NEED Personal Condominium Insurance for that. Aside from replacing your personal property, it will help you with rent, while you're still paying your mortgage.


Contact us.

617-437-9400 [www.jjbodner.com](http://www.jjbodner.com) 8 Clarendon St Boston

**JJBodner**  
Insurance Agency of Boston



**THE TAKE**  
WITH SUE O'CONNELL



SHE HAS A LOT TO SAY...  
SO DO HER GUESTS

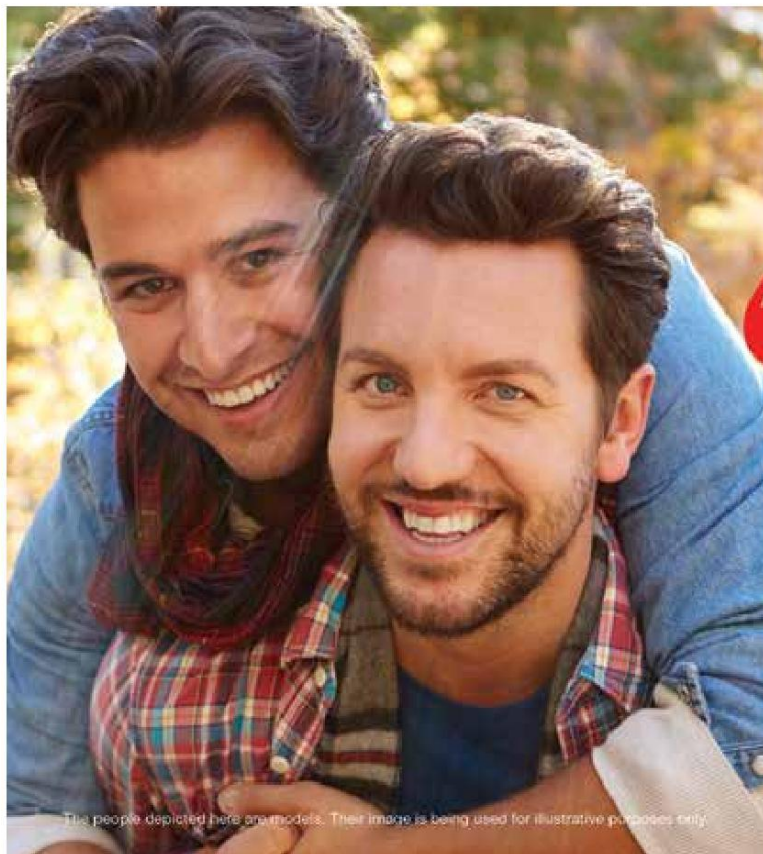
**WEEKDAYS**  
@ 7 & 8 PM

**necn**  
www.necn.com

**Follow South End News on twitter**



**go to twitter.com/SouthEndNews**



The people depicted here are models. Their image is being used for illustrative purposes only.

We are the future of the **LGBT** community.



"The world still has its challenges but things are getting better. From the way we first met on line to marriage equality to our daughter's upcoming Quinceañera our life together is more fulfilling every day. We keep up with events and entertainment on EDGE, because that's where we see our future at its brightest."

**EDGE MEDIA NETWORK**  
the future of lgbt media

edgemedianetwork.com



# South End News

**Service Guide Ads Get Results.**

617.464.7280 • sales@southendnews.com

## SERVICE GUIDE

### PLUMBING • HEATING • HVAC

#### S.G. Harold Plumbing, Heating & AC

Specializing in Viessman Boiler  
Home Heating Repairs & Service  
Unico Air Conditioning • Radiant Floor Heating

**Boston 617-696-2400**

Unprecedented Service Tailored To You  
MA Lic # 10589

### ROOFING

#### McDonnell Roofing Co. Roofing Specialist

*Fully Insured*  
Slate and Copper Work - Rubber Roof Systems  
Shingles and Gutters - Repairs - Lic. Contractor Reg. #100100

**617-288-3448**

Free Estimates • Over 40 years of experience

McDonnellRoofingBoston.com

### CLEANING

## Spring Cleaning

For All Seasons

- Trustworthy cleaning services to meet your needs
- Houses, apartments and commercial
- Schedule that works best for you, weekly, bi-weekly, or monthly
- All routine housework, plus special clean-up jobs
- Owner supervised cleaning crew and ensures quality
- Excellent references and competitive rates



**Cleaning by Judy**  
**617-501-9645**

## Service Guide Ads Get Results

For more information please call:

**617.464.7280**

## BRUNO GUERRIERO CONSTRUCTION, INC.

### Water Proofing Solutions

Basements • Facades • Chimneys



### Emergency Repairs

Roofs & Walls • Clean Outs

COMPLETE MASON CONTRACTOR

Custom Brick, Stone Work & Brick Pavers

ALL TYPES OF REPAIRS AND RESTORATIONS

Flood Damage Repair • Brownstone Repair • Stairs Restored • Foundations

BrunoGuerrieroConstruction.com

Brunosworld@comcast.net

MENTION THIS AD, GET 10% OFF

HIC  
REG#  
268196

FULLY INSURED

**(800) 444-5476**

FREE ESTIMATES



### MASONRY



## P. Stones Contracting, Inc.

Specializing in Historic Restoration,  
Brick Repointing, Brick, Block, Stone,  
Basement Floors, Caulking & Waterproofing.

Ornamental window sills, window headers and moldings.  
Fully licensed and insured. 15 years of satisfied customers and referrals.

Office: 781-848-6922 • Fax: 781-848-6923

Cell: 617-592-0850 • pstonescontracting@hotmail.com

### MASONRY

## Rynne Masonry, Inc

20 Years of Experience Working with Clients in the South End  
Specializing in all types of Brownstone Restoration

Brickwork • Repointing  
Step Repair (Rebuild, Restore and Resurface)  
Chimney Repair • Basement Flood Repairs

Fully Insured and licensed. Please call for references and work samples.  
Francis Rynne 617-510-2775 or 617-783-0516

### ELECTRICAL



**D'S ELECTRIC**

PROVIDING QUALITY  
ELECTRICAL SERVICES  
to the BOSTON AREA

Residential & Commercial

Free Estimates

24 Hour Service

Dedicated to Customer Service Since 1971

617.542.2000

www.ds-electric.com

Mass Licence #14580A

### CONSTRUCTION • GENERAL • REMODELING

## The Dependable Handyperson

FINE PAINTING AND REFINISHING  
SMALL REPAIRS AND RENOVATIONS

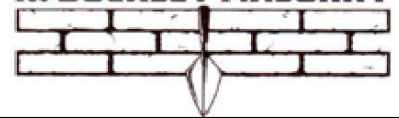
DECK AND GARDEN WORK

Call Jean at 617-236-1795

dependablehandy@aol.com

### MASONRY

## R. BUCKLEY MASONRY



Fully licensed and insured  
BBB accredited

RBUCKLEYMASONRY@YAHOO.COM

**617-283-6691**

WWW.RBUCKLEYCONSTRUCTIONINC.COM

FREE CONSULT AND ESTIMATES

REPOINTING  
RESTORATION  
BASEMENTS  
URBAN LANDSCAPE  
DESIGN/BUILD  
CHIMNEYS  
STEPS  
CONCRETE  
STONE  
BRICK



TWO SOUTH END LOCATIONS

# House of Siam



Open for Lunch & Dinner  
Come Experience our Beautiful Dining Room and the  
Freshest Thai Cuisine in Boston

592 Tremont St. (near Dartmouth Street)

Take out is available from 11:30 a.m. to 11:00 p.m. daily

617.267.7426

542 Columbus Avenue

617.267.1755

