

## Haunted Graveyard Tour At South End Burying Ground

Offers Spooky Glimpse Into South End History

Halloween is approaching, and so is this year's Haunted Graveyard Tour at the South End Burying



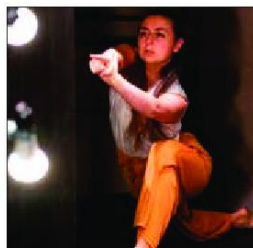
Continued on page 3 Photo by Michele D. Maniscalco.

## Preserving Holocaust Survivor Stories Through Dance

Hidden, Plaza Black Box Theatre, Boston Center for the Arts, October 20-22. [bostontheatrescene.org](http://bostontheatrescene.org) or 617-933-8600.

BY JULES BECKER  
Contributing Writer

Rachel Linsky has found a novel way of giving permanence to the testimonies of Holocaust survivors—



Choreographer Rachel Linsky in her new work "Hidden" Photo by Nicole Volpe.

Continued on page 7

## ANALYSIS

### No, BU biolab didn't create an even deadlier Covid-19 virus

COURTESY ADAM GAFFIN  
[www.universalthub.com](http://www.universalthub.com)

National Emerging Infectious Diseases Laboratories on Albany Street (known as 'Biolab') designed to study

Statnews.com reports that researchers at Boston University's

Continued on page 3

## A Breathtaking Look At The History of Women, and Computers

Ada and the Engine, Brit d'Arbeloff Women & Science production, part of Catalyst Collaborative@ MIT, Central Square Theater, Cambridge, through October 23. [centralsquaretheater.org](http://centralsquaretheater.org) or 617-576-9278

BY JULES BECKER  
Contributing Writer

Lauren Gunderson seems to have a knack for depicting real life women struggling against societal challenges and chauvinistic attitudes to achieve their professional goals. A



Mishy Jacobson as Ada Byron Lovelace in Central Square Theater's Ada and the Engine. Photo: Nile Scott Studios.

Continued on page 4

## Boston's Cathedral High School Announces Three Gifts Totaling \$9.75 Million

SUBMITTED BY  
CATHEDRAL HIGH SCHOOL

With gratitude to the Adopt-A-Student Foundation (AASF), Cathedral High School (CHS) an independent, 7th through 12th grade, Catholic, college preparatory school in Boston's historic South End, is proud to announce it is the recipient of three extraordinary gifts from Genevieve Murphy, Steve and Lisa Hyde and an anonymous donor. The Adopt-A-Student Foundation is a Massachusetts charitable trust organized to



Front row (L-R): Britney Ishmael, Jonas Pena, Laura Agblekpe, Andrew Hedgepath, Nebiyu Samuel, Ludjy "Pat" Elvariste, Carl Charlott. Four students in back row (L-R): Joshua Boyle-Collins, Kaleb Sawyer, Sincere Tavarez, Kyree Egerton. Photo by Courtney Lucas/Cathedral High School.

Continued on page 4

## FALL-O-WEEN CHILDREN'S FESTIVAL



Enjoy fall and Halloween themed activities!

- Haunted Zombie Maze
- Jumpin' Pumpkin
- Spooky Mansion Slide
- Bubble demo by Jim Dichter
- Trackless Train
- LED swings, seesaws, and cornhole
- Circus stilt walker
- Field games by Knucklebones

Friday, October 21 | 5-8 p.m.  
Boston Common, Parade Ground  
Halloween Costumes encouraged!

For more info, visit: [boston.gov/falloween](http://boston.gov/falloween)



CITY OF BOSTON

Parks and Recreation

Hood

MRA MISSION REALTY ADVISORS



**LODEG**

**LAW OFFICES**  
Donald E. Green, P.C.

# Everyone is going **GREEN!**

For all your legal needs, call the Law Offices of Donald E. Green.

We concentrate on personal injury matters as well as criminal defense, civil rights, immigration matters, wills & trusts, Chapter 7 bankruptcy, real estate and sexual harassment claims.

Please call **Attorneys Don or Annette Green**

at (617) 442-0050 or  
email [dgreen@donaldegreen.com](mailto:dgreen@donaldegreen.com)  
or [agreen@donaldegreen.com](mailto:agreen@donaldegreen.com)

**After more than 30 years  
in Dudley Square  
we have moved.**

**Washington Park Mall (less than a mile  
from our previous location)**



**Don Green**

**330 Martin Luther King  
Boulevard, Roxbury**



**Annette Green**

# City of Boston kicks off free fall fitness series

The Boston Parks and Recreation Department and the Boston Public Health Commission (BPHC) are pleased to announce the 2022 Boston Parks Fall Fitness Series sponsored by Blue Cross Blue Shield of Massachusetts. The series will offer free weekly classes both virtually and in City of Boston parks from October 2 to November 19, 2022.

The series offers Bostonians healthy activities including Chair Yoga, Dance Fit, HIIT, Kick-It, Strength & Conditioning, and ZUMBA®. There are a variety of programs including age-friendly classes for families and older adults as well as those who may be new to fitness classes.

For more information and a link to the full schedule, please visit [Boston.gov/fitness](http://Boston.gov/fitness).

By engaging in a citywide effort to increase opportunities for physical activity, the

Parks Department and BPHC aim to further reduce barriers to active living and ensure that Bostonians have ample opportunities to be active.

The 2022 Summer Fitness Series was a huge success with hundreds of Bostonians participating in the 27 weekly classes throughout the city and virtually. The fall series provides an opportunity for Boston residents to continue exercising virtually during the week when sunrises are later and sunsets are earlier, and on weekends with activities outside and in person. All classes are free and open to the public.

Stay up to date with news, events, and design and construction work in Boston parks by signing up for our email list at [bit.ly/Get-Parks-Emails](http://bit.ly/Get-Parks-Emails) and following our social channels @bostonparksdept on Twitter, Facebook, and Instagram.

## CRIME

FROM BOSTON POLICE DEPARTMENT REPORTS

### Large Fight in District D-4 Triggers Large Police Response and Results in Multiple Arrests

At about 6:19 PM on Friday, October 7, 2022 Officers assigned to District D-4 arrested multiple individuals in the area of 709 Columbus Ave., Boston.

Officers were on directed patrol in the area of Carter Playground for a football game. While on scene, officers' attention was drawn

to a large group of juveniles forming on a nearby tennis court. As Officers approached, they observed a fight, with multiple juveniles watching. As the juveniles began to disperse, they observed a male, later identified as the 16-year-old juvenile male, laying on the ground. The juvenile refused to cooperate with officers, and eventually fled from officers on foot, and officers lost sight of him in the large crowd that had become increasingly unruly and hostile towards officers. Officers on scene requested additional units to the scene, eventually requesting all available units from the city to respond in an attempt to help control the crowd.

Officers made multiple arrests as a result of this incident.

### Biolab

Continued from page 1

killer microorganisms—grafted the spike of an omicron variant of the virus onto one of the OG strains from Wuhan to see whether something on the spike was changing the virus's virulence.

Apparently, while the new spike makes omicron better able to get through people's immune systems, it did not make the "chimeric" version more virulent—sure, it killed

80% of the mice it was injected into, but the original virus killed 100%.

So no, BU didn't create an even deadlier Covid-19 virus. BU adds the work was approved by both an internal BU safety committee and the Boston Public Health Commission.

Still, Stat adds federal research honchos are a bit miffed that they didn't know what BU researchers using their money were up to—they say they first learned about the work from media reports.

### Graveyard Tour

Continued from page 1

Ground on Washington Street between East Newton and East Concord Streets in Boston's historic South End. The mysterious, locked graveyard will be opened for the day, with freelance writer and South End News contributor Michele D. Maniscalco recounting

the surprising history of the burying ground, which operated between 1810 and 1866, as well as other macabre tales from South End history. Tours will take place at 2:00 PM and 3:15 PM on Saturday, October 29. The tour is free, suitable for all ages, and open to the public.

In the event of rain on October 29, the tour will take place on Sunday, October 30 at 2:30 PM only.

**Map Out Your Career**

Learn more and apply now at [mbta.com/careers](http://mbta.com/careers)

Track Laborer

Fueler

Bus Operator

Motor Person

Project Controls Analyst

IT Project Manager

Automotive Technician

Rail Repairer

Repair Foreperson

**T**

# Cathedral High

Continued from page 1

further student success by providing financial assistance to Cathedral High School scholars.

Genevieve L. Murphy, wife of proud CHS alumnus James D. “JD” Murphy ‘66, who passed away in 2018, has made an unprecedented gift of \$5.5M in scholarship to aid Cathedral’s mission to deliver a rigorous and holistic education that is available for all families, regardless of ability to pay. Strong in her faith and Catholic beliefs, Murphy is a passionate advocate for Catholic education and the pivotal impact it can have on students.

“Over the years, JD and I have had the honor of being a part of Cathedral’s life-changing mission. Sharing the legacy of my husband, who was afforded a Cathedral education, is one way my family can recognize the generosity that we have received throughout our lives and pass on the values and work ethic that JD always stood for,” said Genevieve Murphy. “The students are truly remarkable, and I have seen how investing in Cathedral scholars has transformed not only

their lives but their families’ lives as well.”

A gift of \$1.5M, designated for student scholarships, was made from Steve and Lisa Hyde, who reside in Lakewood Ranch, Florida and Wilmington, Delaware. This is the largest gift received from a new donor in over a decade. The Hydes immediately fell in love with the mission of Cathedral and the CHS scholars through a relationship with school President, Dan Carmody.

“I was inspired by my father, Lawrence, who was committed to making a deep philanthropic impact and I’ve made it my goal to follow in his footsteps. He succeeded in life because someone gave him the chance he needed; now we hope to do that for others at Cathedral High School,” said Steve Hyde.

In addition to these amazing donations, Cathedral High School is delighted to report an anonymous \$3.25M gift has been made to AASF and will be directed towards student scholarships. The donor acknowledges their investment is helping Cathedral further their mission which fosters a rich culture of inclusion, opportunity, acceptance and empowerment.

This is the largest one-time gift that CHS has received from a foundation.

“I am incredibly grateful to these donors for their phenomenal generosity and their belief in Cathedral. Their commitment and passion for helping underserved families will change the lives of countless students who will now have access to a transformational education. Their humbleness and quiet desire to provide an ambitious future for deserving young students is inspiring,” said Carmody. “By alleviating the financial burden so many families face, we’ve created a school that is rich in talent and accessible for all families. Our unwavering commitment to equity and opportunity has been the foundation of our community since our inception nearly a century ago, and these selfless donors have amplified this powerful mission.”

Cathedral High School is coed and serves grades 7-12. While the annual cost to educate one student is \$20,000, the average financial aid award is approximately \$18,000 per family. For more information, please visit [www.cathedralhighschool.net](http://www.cathedralhighschool.net).



Donor Steve Hyde. Photo by Courtney Lucas/Cathedral High School.



(L-R): Britney Ishmael, Kaleb Sawyer, Jonas Pena. Photo by Courtney Lucas/Cathedral High School.

## Ada

Continued from page 1

strong Central Square Theater production of “The Half-Life of Marie Curie” (2019) vividly depicted the two-time Nobel Prize-winning scientist’s battle against such obstacles.

Now Central Square scores once again with a Gunderson drama—this time the inspired Brit d’Arbeloff Women & Science staging of “Ada and the Engine” (2015, also known as “Ada and the Memory Engine”) a largely absorbing look at the title pioneer’s exploration of pre-computer programming with fellow mathematician and professional soul mate Charles Babbage.

Ada Byron Lovelace (1817-1852), daughter of the legendary poet and his only legitimate child, was an accomplished pianist and mathematician. Yet the prodigy’s greatest passion—shared by much older mentor and “father of the computer” Babbage (1791-1871)—proved to be the investigation of the powers and potential of machines that would eventually become computers.

Playwright Gunderson—as articulate in explaining technological developments in Victorian England as in detailing Curie’s work

in “The Half-Life of Marie Curie”—smoothly chronicles Ada’s professional rite of passage from a 17 year old protégé to a true visionary.

Along the way (in a quest that sadly ended with her untimely death at 36 from uterine cancer), Ada confronts and resists the pressures of a society—and husband Lord William Lovelace—that means to keep women domesticated and suppress their professional ambitions. Gunderson effectively devotes much of the play to her relationship with Babbage—one that was certainly professionally passionate if not romantic.

If evidence of a physical relationship between Ada and Charles has yet to be established, the playwright has nevertheless made a compelling case for a platonic romance on the threshold of love. Under Deb made especially persuasive thanks to Debra Wise’s sharp direction, that case is especially compelling thanks to the superb efforts of Mishy Jacobson as Ada and Diego Arciniegas as Charles.

Jacobson, in a breath-taking debut at Central Square Theater, is a revelation as Ada. She beautifully captures her free spirit, intellectual intensity and vulnerability as a Victorian wife. Jacobson convincingly speaks as Ada of con-

nections between music and math as well as her algorithm for Babbage’s Analytical Engine.

Gifted veteran actor Arciniegas makes an overdue return to the Hub as Babbage. He smartly balances Babbage’s pivotal mentoring, his strong feeling and bonding with Ada and his frustration in the face of protective mother Annabella Byron’s efforts to keep him away from her daughter. Jacobson and Arciniegas artfully capture the poetry and the scientific precision of the poignant exchanges between Ada and Charles.

Kortney Adams has all of Annabella’s Victorian tenacity vis-à-vis Ada and tutor Mary Somerville’s caring—though the latter role is somewhat underwritten. John Hardin catches Lord Lovelace’s alternating cluelessness and concern.

He also finds Lord Byron’s exuberance in a strikingly imagined scene with Ada. Cristina Todesco’s set pieces are both spare and elegant. John Malinowski’s nuanced lighting complements the brainstorming of Ada and Charles.

Ada and Charles paved the way for computers to more than crunch the numbers. Once again Central Square is bringing needed and wonderful attention to women of vision.



### Publishers:

Jeff Coakley  
Sue O’Connell

### Editor-in-Chief:

Sue O’Connell  
[sue.southendnews@gmail.com](mailto:sue.southendnews@gmail.com)

### Editorial Design Manager:

Julie Walker Palmer

### Contributing Writers:

Michele D. Maniscalco  
Dog Lady

### Display Advertising:

Jeff Coakley  
[jcoakley@southendnews.com](mailto:jcoakley@southendnews.com)

### Classified Advertising:

[sales@southendnews.com](mailto:sales@southendnews.com)

### Letters to the editor:

[letters@southendnews.com](mailto:letters@southendnews.com)

### Calendar listings:

[sencalendar@southendnews.com](mailto:sencalendar@southendnews.com)

© 2022 South End News Inc.  
PO BOX E14,  
Boston, MA 02127

The South End News is a copyrighted publication. Any stories or photos contained herein may not be reproduced in whole or in part without the express written permission of the publisher. The South End News will not assume financial responsibility for typographical errors in advertisements. Questions or complaints regarding advertising must be sent in writing to the billing department within seven days of publication in order for adjustments to be made to the account. We reserve the right to use our discretion in accepting or rejecting advertising copy. South End News is not responsible for damages due to typographical errors, except for the cost of replacing ads that have typographical errors caused by our negligence. South End News is published every other Thursday.

[www.southendnews.com](http://www.southendnews.com)

Facebook & Twitter  
[@southendnews](https://www.facebook.com/southendnews)



### Letters policy

To be considered for publication, letters must be no longer than 500 words; refrain from extreme personal attacks; be signed and include an address and daytime telephone number. Writers should refrain from making incorrect statements since they may be barred from future issues. Deadline is noon Tuesday for Thursday’s paper. To send us letters: Mail to PO BOX E14, Boston, MA 02127; E-mail: [letters@southendnews.com](mailto:letters@southendnews.com)

# NEW DEACONS



Cardinal O'Malley joins with nine new deacons for a group photo at the Cathedral on Saturday, October 15, 2022 after the ordination Mass. The new deacons come from all over the Archdiocese and will be assigned to parish duties. Photo by Patrick O'Connor.



## SOUTHEND APARTMENTS FOR RENT

Professionally Managed Building with Elevator and Laundry

Next to Blackstone and Franklin Square Park

1 BEDROOM  
STARTING AT  
**\$2,275**  
MONTHLY

2 BEDROOMS  
STARTING AT  
**\$2,500**  
MONTHLY

Heat & Hot Water Included.  
First and Last Month Rent Required.

Call 617-364-5000  
or email [pannie@geraghtyassoc.com](mailto:pannie@geraghtyassoc.com)

### Get local!

Advertise your property in the **South End News.**

Email Jeff at [sales@southendnews.com](mailto:sales@southendnews.com)



Joyous early learning for children aged 2 - 5



## Spruce Street Nursery School

5 Avery Place  
Boston, MA 02111

617-482-5252  
[www.sprucestreet.org](http://www.sprucestreet.org)

Please join us at our  
**Admissions Open House**

Saturday, October 29<sup>th</sup> 9-1:00 PM

Tour the school with current parents, meet teachers, and administrators  
Children are welcome!

The application deadline for the 2023-2024 school year is  
January 13, 2023  
Tuition Assistance is Available

Scan to RSVP!



Property Management • Realty • Development

### Applications available now at Long Glen Rental II LLC!

There are currently 2-bedroom units available. Conveniently located in the Allston/Brighton area. Easy access to Green line MBTA and bus routes.

The following Minimum And Maximum Income Qualifications apply to the 2-bedroom units:

Household size	Minimum Income	Maximum Income
2 Person	\$56,790	\$67,320
3 Person	\$56,790	\$75,720
4 Person	\$56,790	\$84,120

Rent is set at **\$1,796.00 per month** (subject to change annually).  
Heat and hot water are included in the rent. Housing Assistance Payment Vouchers are accepted and welcomed.  
Long Glen Rental II LLC is managed by Maloney Properties LLC.

Applications can be requested by mail to:  
**Long Glen Rental II 1285 Commonwealth Ave.  
Suite #B, Allston MA 02134.**

or by email at  
[AllstonBrightonInfo@maloneyproperties.com](mailto:AllstonBrightonInfo@maloneyproperties.com)  
or by phone at 617-782-8644.





Insuring your most cherished possessions



Auto Home Business Condo Pet Insurance

8 Clarendon St Boston 617-437-9400

[jjbodner.com](http://jjbodner.com)



## Residential / Commercial

*"When it comes to painting and carpentry, we're the Angels you've been looking for."*

Cell: (781) 640-5590

Office: (508) 270-6841

[Tim@angelpainting.net](mailto:Tim@angelpainting.net)

[www.angelpaintinginc.com](http://www.angelpaintinginc.com)

## Smile Craft

Changing Lives  
One Smile at a time

-  General Dentistry
-  Teeth Whitening
-  Fillings
-  Dental Implants



Dr. Harry P. Troon  
DMD



Dr. Christopher Troon  
DMD

At Smile Craft, our philosophy is to provide treatment to the whole person - with a special focus on how your teeth and gums relate to your total body health. We want you to be confident that your smile achieves your goals for comfort, function and appearance. We're here to make that happen.

Relax with confidence at Smile Craft. We're your neighbors and we're here to help you maximize the health of your smile.

Visit us online or call  
to make an appointment

**(857) 317-3030**

[www.smilecraftsouthend.com](http://www.smilecraftsouthend.com)

22 Traveler Street, Boston, MA 02118



# NOW HIRING PACK LEADERS in Brookline & Brighton!

Contact us at  
[djdogservices@gmail.com](mailto:djdogservices@gmail.com)  
for more information!

Dog walking & more!  
[www.DJDogServices.com](http://www.DJDogServices.com)





## Homeownership more affordable.


M&T has options to help you achieve homeownership.

### You may be eligible for solutions to help:

- Reduce the cash needed at closing
- Lower monthly payments
- Save thousands by paying less interest
- Qualify with a less-than-perfect credit history

Get started with one of our mortgage specialists by calling 1-888-253-0993 or visit us at [mtb.com](https://www.mtb.com).



 Equal Housing Lender.  
Certain restrictions apply. Subject to credit and property approval.  
© 2022 M&T Bank. Member FDIC. NMLS# 381076. AMP-3254-A 221012 VF

Vaccines save lives & lessen symptoms.  
Protect yourself & loved ones from COVID-19.



## GET VACCINATED AND BOOSTED.

Call Mayor's Health Line 617-534-5050 to find a vaccine location.

[boston.gov/covid-19](https://boston.gov/covid-19)

CITY of BOSTON  City of Boston Age-Strong Commission  Boston Public Health Commission  Greater Boston Urban League

## VOTE EARLY BOSTON

Saturday, October 22 - Friday, November 4, 2022

**SATURDAY, OCTOBER 22, - SUNDAY, OCTOBER 23 | 11 A.M. - 7 P.M.**

**BCYF Paris Street Community Center**

112 Paris Street, East Boston, MA 02128

**BCYF Quincy Community Center**

885 Washington Street, Chinatown, MA 02111

**Thelma D. Burns Building**

575 Warren Street, Dorchester, MA 02121

**Another Course to College Cafeteria**

612 Metropolitan Avenue, Hyde Park, MA 02136

**Margarita Muniz Academy**

20 Child Street, Jamaica Plain, MA 02130

**Dewitt Center**

122 Dewitt Drive, Roxbury, MA 02120

**Boston Public Library - Central Branch (Johnson Building)**

700 Boylston Street, Back Bay, MA 02116

**Jackson Mann School**

500 Cambridge Street, Allston, MA 02134

**Richard J. Murphy K-8 School Cafeteria**

1 Worrell Street, Dorchester, MA 02122

**TUESDAY, OCTOBER 25 | 12 - 8 P.M.**

**Saint Nectarios Greek Church (Banquet Hall)**

39 Belgrade Avenue, Roslindale, MA 02131

**BCYF Tobin Community Center (Lower Level)**

1481 Tremont Street, Roxbury, MA 02120

**THURSDAY, OCTOBER 27 | 12 - 8 P.M.**

**Florian Hall**

55 Hallet Street, Dorchester, MA 02122

**The Institute of Contemporary Art Boston**

25 Harbor Shore Drive, Boston, MA 02210

**SATURDAY, OCTOBER 29, - SUNDAY, OCTOBER 30 | 11 A.M. - 7 P.M.**

**Harvard/Kent Elementary School Gymnasium**

50 Bunker Hill Street, Charlestown, MA 02129

**James F. Condon School Cafeteria**

200 D Street, South Boston, MA 02127

**BCYF Perkins Community Center Gymnasium**

155 Talbot Avenue, Dorchester, MA 02124

**Mildred Avenue K-8 School Gymnasium**

5 Mildred Avenue, Mattapan, MA 02126

**BCYF Roche Community Center Gymnasium**

1716 Centre Street, West Roxbury, MA 02132

**Fenway Park (Gate A)**

4 Jersey Street, Fenway, MA 02215

**BCYF Shelburne Community Center Gymnasium**

2730 Washington Street, Roxbury, MA 02119

**The Salvation Army Kroc Center**

650 Dudley Street, Dorchester, MA 02125

**Honan-Allston Branch Library (Community Room)**

300 North Harvard Street, Allston, MA 02134

**TUESDAY, NOVEMBER 1 | 12 - 8 P.M.**

**Saint Nectarios Greek Church (Banquet Hall)**

39 Belgrade Avenue, Roslindale, MA 02131

**BCYF Hyde Park Community Center**

1179 River Street, Hyde Park, MA 02136

**THURSDAY, NOVEMBER 3 | 12 - 8 P.M.**

**St. George Orthodox Church of Boston**

55 Emmonsedale Road, West Roxbury, MA 02132

**The Institute of Contemporary Art Boston**

25 Harbor Shore Drive, Boston, MA 02210

### BOSTON CITY HALL

#### WEEK 1 | OCTOBER 24 - 28

Monday, October 24 | 9 a.m. - 5 p.m.

Tuesday, October 25 | 9 a.m. - 8 p.m.

Wednesday, October 26 | 9 a.m. - 5 p.m.

Thursday, October 27 | 9 a.m. - 8 p.m.

Friday, October 28 | 9 a.m. - 5 p.m.

#### WEEK 2 | OCTOBER 31 - NOVEMBER 4

Monday, October 31 | 9 a.m. - 5 p.m.

Tuesday, November 1 | 9 a.m. - 8 p.m.

Wednesday, November 2 | 9 a.m. - 5 p.m.

Thursday, November 3 | 9 a.m. - 8 p.m.

Friday, November 4 | 9 a.m. - 5 p.m.

[boston.gov/ballot-dropboxes](https://boston.gov/ballot-dropboxes)

CITY of BOSTON

