

### South End resident Caitlin Saks named GBH '23 Peter S. McGhee Fellow

SUBMITTED BY GBH

Boston public media producer GBH has awarded fellowships to three outstanding producers, recognizing excellence, potential and creativity. The recipients of the 2023 Fellowship Awards are Elizabeth (Biz) Thorsen, who received the Becton Fellowship, Yatibaey Evans who received the Margret and Hans Rey Fellowship, and Caitlin Saks who received the Peter S. McGhee



Caitlin Saks. Photo courtesy of WGBH.

Continued on page 6

### A fresh Carol, a wacky Play

A Christmas Carol, Merrimack Repertory Theatre, Lowell, through December 24. 978-654-4678 or www.art.org

BY JULES BECKER  
Contributing Writer

Did Lowell's Mill Girls influence Charles Dickens in writing "A Christmas Carol"?

The famous writer, making his first American tour in 1842—a year before he published the now famous novella—actually traveled from Boston to Lowell. There he

Continued on page 4



Kyosin Kong and Karen MacDonald in rehearsal photo for Merrimack Repertory Theatre's production of "A Christmas Carol.", courtesy of Meghan Moore.

### CRIME

#### Death Investigation at 35 Northampton Street, Roxbury

FROM BOSTON POLICE  
DEPARTMENT REPORT

At about 8:08 PM, on Sunday, December 11, 2022, officers assigned to District D-4 (South End/Lower Roxbury), responded to a

radio call to check on the wellbeing of a resident on the 12th floor.

Upon arrival, officers knocked and announced their presence and purpose multiple times and did not

Continued on page 6

#### Boston Public Health Commission Warns Residents About Rapid Increase In Flu Cases

FROM BPHC

More than 700 flu cases have been reported in Boston in the last week.

The Boston Public Health Commission (BPHC) is warning residents of an early and rapid rise in

flu cases reported across the city, with more than 700 cases of influenza reported in the last week, bringing the total number in Boston to 1,784 since October 1. BPHC has also observed a rapid increase in influenza-related pediatric hospitalizations in the past week.

Flu season is generally considered from October to May, and usually peaks between December and February. The current levels of influenza activity are concerning, and this high level is occurring

Continued on page 4

### 81st Annual Boston Common Tree Lighting



South Enders Lisa Marchese-Shugert and Rob Shugert welcome their friend Tinamarie Sanborn of Wakefield (left) to Boston's signature holiday celebration, the 81st Annual Boston Common Tree Lighting hosted by Mayor Michelle Wu, the Boston Parks and Recreation Department, and title sponsor The Province of Nova Scotia on December 1. This year marked the 51st year that Nova Scotia has given a tree to the people of Boston as thanks for relief efforts following the December 6, 1917, explosion of a munitions ship in Halifax Harbor. The official holiday season kick-off in Boston included the lighting of the City of Boston's official Christmas tree, a 45-foot white spruce donated by landowner Roddy Townsend of Christmas Island, and other trees throughout Boston Common and the Public Garden.



Luis Dominguez of the South End (right) and Noah Williams of East Boston join the revelers on Boston Common for the 81st Annual Holiday Tree Lighting hosted on December 1 by Mayor Michelle Wu, the Boston Parks and Recreation Department, and title sponsor The Province of Nova Scotia.

CHECK FOR BREAKING NEWS DAILY @ [MYSOUTHEND.COM](https://mysouthend.com)

**FOLLOW US!**  
[@SOUTHENDNEWS](https://twitter.com/southendnews)



**LIKE  
SHARE  
FOLLOW**

# Smile Craft

Changing Lives  
One Smile at a time



Dr. Harry P. Treon  
DMD



Dr. Christopher Treon  
DMD



At Smile Craft, our philosophy is to provide treatment to the whole person - with a special focus on how your teeth and gums relate to your total body health. We want you to be confident that your smile achieves your goals for comfort, function and appearance. We're here to make that happen.

Relax with confidence at Smile Craft. We're your neighbors and we're here to help you maximize the health of your smile.



**General Dentistry**



**Teeth Whitening**



**Fillings**



**Dental Implants**

Visit us online or call  
to make an appointment

**(857) 317-3030**

[www.smilecraftsouthend.com](http://www.smilecraftsouthend.com)

22 Traveler Street, Boston, MA 02118

# Torch burns bright



Peter Mill as Arnold and Bobbie Steinbach as Ma in the Moonbox Production of "Torch Song"; Photographer-Nikolai Alexander/F Point Productions.

**Torch Song**, Moonbox Productions, Roberts Theatre, Calderwood Pavilion at the Boston Center for the Arts, through December 23. Tickets: <https://bit.ly/TorchSng> or 617-933-8600 (Pay-What-You-Can tickets are available at the box office; every ticket benefits Greater Boston PFLAG).

By Jules Becker  
Contributing Writer

Harvey Fierstein was pioneering respect and understanding for gays and same-sex relationships years before Tony Kushner ("Angels in America") and Richard Greenberg ("Take Me Out"). Even before he authored the book for "La Cage Aux Folles" (1983), he performed in his own play "Torch Song" (1981, 1982-Broadway)—winning Tonys for best play and lead actor.

This insightful drama resonates now more than ever with its timeless message of love in the face of hate and prejudice. The Moonbox Productions revival at the Calderwood Pavilion—under the inspired direction of company associate artistic director and founding partner Allison Choat—beautifully captures the play's emotional richness and impact in what is arguably the finest staging of 2022.

In her director's notes, Choat speaks of the play as "a love letter—a complex, vibrant and relentless love letter to relationships in all their dysfunction and glory, to every shade and shape and sense of love." Her description is both accurate and insightful—particularly for gay Jewish protagonist Arnold Beckoff. Fierstein, who once worked as a drag queen in Greenwich Village clubs, has described his stage counterpart as a "kvetch of great wit and want." Beckoff seems to defend himself from rejection and disappointment with witty kvetching yet never really gives up searching for his ideal man.

That search for not only love and a family with a partner but also acceptance by his judgmental widowed mother—here identified simply as Ma—ties together the parts of this trilogy (originally entitled "Torch Song Tri-

ogy"). In the opening "The International Stud (June 1974)" Arnold—whose performer names include Virginia Hamm and Kitty Litter—wants a real lasting relationship and love with a caring mate—not brief, loveless backroom encounters.

A Brooklyn man named Ed could be the one, but the closeted bisexual teacher admits to being confused about his identity. The middle "Fugue in a Nursery (Summer 1975)" finds Ed's thoughtful but uncertain wife Laurel inviting Arnold and young boyfriend Alan to the couple's farm in what becomes a revealing relationship test—sharply paced by Choat and smartly played out in Cameron McEachem's smartly spare set design.

Fierstein brings Arnold to a pivotal moment of truth about his own identity in the final act "Widows and Children First (June 1980)" after five idyllic years with Alan, the victim of a deadly gay-bashing. Will Arnold—now adopting a gay former foster child and high schooler named David—embrace returning Ed as a partner and co-parent? Will grieving Arnold be able to find empathy from his mother—who has previously opposed same-sex relationships?

The third act is alternately explosive and reflective moments bring Fierstein's highly personal yet strikingly universal examination of love, relationships and family to a powerful close.

One of the year's finest casts makes that examination both heartfelt and haunting. Peter Mill is commandingly moving and impassioned as Arnold—particularly in his initial dressing room soliloquy and his eventual declaration of self-respect in heated exchanges with Ma. Bobbie Steinbach is forceful as earnest if very blunt Ma. Mill and Steinbach's escalating confrontation as

Continued on page 6



Insuring your most cherished possessions



Auto Home Business Condo Pet Insurance

8 Clarendon St Boston 617-437-9400

[jjbodner.com](http://jjbodner.com)



Homeownership  
more affordable.


M&T has options to help you achieve homeownership.

You may be eligible for solutions to help:

- Reduce the cash needed at closing
- Lower monthly payments
- Save thousands by paying less interest
- Qualify with a less-than-perfect credit history

Get started with one of our mortgage specialists by calling 1-888-253-0993 or visit us at [mtb.com](http://mtb.com).

M&T Bank

 Equal Housing Lender.  
Certain restrictions apply. Subject to credit and property approval.  
©2022 M&T Bank. Member FDIC. NMLS# 381076. AMP-3254-A 221012 WF

## Carol

Continued from page 1

met Mill Girls, some of whom wrote of ghosts and human redemption for the periodical *The Lowell Offering*.

Now Merrimack Repertory Theatre artistic director Courtney Sale has preceded her world premiere adaptation of "A Christmas Carol" with an evocative commemoration of the Lowell visit—complete with a handsome staircase—kudos to scenic designer Shelley Barish—recalling the one where the young women had thronged.

This wonderfully fresh 80-minute no-intermission version also features Boston-based actress Karen MacDonald—who has become a kind of MRT artist-in-residence (recently as Erma Bombeck) as both Dickens and Scrooge.

As with any gifted actress (Cynthia Strickland at Trinity Repertory Theatre comes to mind for this critic), playing Scrooge turns into a very satisfying tour de force. MacDonald—whether sporting top hat or nightcap—immediately convinces as the cantankerous businessman who eventually transforms into a giddy philanthropist and ideal employer. Her evocative gestures, varied facial expressions and vivid body language make her portrayal of Scrooge an instant classic.

Under Sale's seamless direction, she becomes fully involved in the journey on which Scrooge travels with the ghosts of Past, Present and Future—all portrayed with impressive distinctiveness by Kyosin Kong, elegantly attired by designer Becca Jewett.

Tom Coiner is a standout capturing the angst-ridden ghost of business partner Marley and the transcendent good nature and cheeriness of nephew Fred. Christina

Acosta Robinson finds Mrs. Cratchit's tenacity and Ken Robinson catches husband Bob Cratchit's devotion to family. Look for high energy and ensemble strength from adult and child actors alike.

Brian Lilienthal's nuanced lighting moves smoothly from the early darkness of Scrooge's encounter with Marley through the surreal dream state of the ghost visitations—especially the ominous tombstone lighting—to the joyous look of his transformation. Rob Wimer's smart sound design fully complements the changes in Scrooge's fortunes.

The redeemed Scrooge gave credit where credit was due. In that spirit, credit Sale, MacDonald and company for a sublimely intimate reminder of the values, virtues and simple pleasures of Dickens' holiday gem.

**The Play That Goes Wrong,**  
Lyric Stage Company of Boston,  
through December 18. 617-585-5678  
or lyricstage.com

Imagine a comedy featuring a playbill with a virtually upside down cover. Add a poster in front of the actual stage area announcing that a certain actor—respectively Chris Evans or Viola Davis, for example—will not appear in the cast.

Expect to see pre-show problems with a mantel piece requiring the help of an audience volunteer and a 'Beware the Dog Cage' warning for missing guard dog Winston. You have just entered a hilarious stage 'Twilight Zone' of bad theater known as "The Play That Goes Wrong" in a sublimely wacky Lyric Stage Company of Boston production smartly helmed by gifted Hub actor-director Fred Sullivan, Jr.

What goes wonderfully right in this wild two-hour collaboration by Henry Lewis, Jonathan Sayer and Henry Shields is the zany unwavering determination by the comedy's fictional Cornley University Drama Society to put on a 1920's style mystery take-off called "The Murder at Haversham Manor." Agatha Christie aficionados will call to mind her long-running "The Mousetrap." Theater buffs will likely see parallels between "The Play" and the antics-rich Michael Frayn comedy "Noises Off."

If Frayn's now classic 1982 gem mixes subtlety and outrageousness, "The Play" opts throughout for belly laugh-inducing errors and slapstick. Look for a wide variety of sight gags and performing mishaps. Doors stick, props fall and precarious set pieces turn Haversham Manor into a character all its own—with kudos to designer Peter Calao. Actors miss lines, overact, underact and enter too early.

By contrast, the Lyric Stage cast displays crack timing, impressive agility and high energy. Nora Eschenheimer—properly harried as leading lady Sandra—is a hoot in a hysterical rant as the mystery's conflicted fiancée Florence. Dan Garcia makes the most of her supposedly murdered fiancé Charles Haversham. Marc Pierre—effectively enigmatic as brother Cecil—is a scene stealer in amusing vocal displays as grand-standing actor Max. Kelby T. Akin has the right robust demeanor as Florence's feisty brother Thomas. Michael Liebhauser is convincingly disarming as Inspector Carter. There is also fine support from Alexa Cadete, Mitch Kiliulis and Dan Whelton

"The Play That Goes Wrong," is a Lyric Stage laugh riot that always goes right.

## BPHC

Continued from page 1

much earlier in the season than usual. Last year, the highest number of influenza cases reported in a given week was 250 at the peak of the flu season in mid-December. The data also indicate the highest number of reported cases is among children and adolescents younger than 18 years old, representing 59% of cases, as well as among Black and Latinx/Hispanic residents. The neighborhoods with the highest case rates are Dorchester, Roxbury, Mattapan, Hyde Park, Jamaica Plain, and South End.

"With flu spreading throughout Boston at such a high rate, there's an urgent need for more residents to get vaccinated to protect themselves and help avoid an even greater influx of cases and hospitalizations during and after the holidays," said Dr. Bisola Ojikutu, Commissioner of Public Health and Executive Director of the Boston Public Health Commission. "I urge everyone to be safe this holiday season. Stay home if you're sick and call your doctor to ask about treatments for flu and COVID-19, in addition to staying up to date on vaccinations, wear a mask indoors to reduce your risk of illness.

The Boston Public Health Commission strongly urges all residents 6-months and

older get their annual flu vaccine, in addition to their COVID-19 vaccines, and that those 5 years and older get their bivalent boosters, to ensure the broadest level of protection against respiratory viral infection. The flu can be a very serious illness, especially for older adults and young children.

Flu vaccines are free and widely available throughout Boston. BPHC has several standing, walk-in sites where residents can get free flu vaccines, as well as COVID-19 testing, vaccines, and boosters. No insurance or ID is needed:

Bruce C. Bolling Building – 2302 Washington St., Roxbury. Open Tuesdays-Saturdays from 12-8pm.

Lena Park Development Corporation – 150 American Legion Highway, Dorchester. Open Sundays from 10am-2p; Mondays & Fridays from 9:30am-5:30pm; and Wednesdays from 12-7pm.

Josephine A. Fiorentino Community Center – 123 Antwerp St., Allston. Open Sundays from 12-4pm; Monday-Wednesday from 9am-3pm; and Thursdays from 5-9pm.

BCYF Hyde Park – 1179 River St., Hyde Park. Open Tuesdays from 12-8pm and Thursdays from 9am to 5pm.

Prescription antiviral drugs are available for people who are sick with flu to shorten the length of the illness, and to prevent severe disease and the need for hospitaliza-

tion. For those at higher risk of serious flu complications, such as people 65 years and older, children younger than 2 years, people who are pregnant, and people with medical conditions such as asthma, diabetes or heart disease, treatment with influenza antiviral drugs can mean the difference between milder or more serious illness that may result in hospitalization. BPHC recommends that anyone who feels sick with symptoms of flu, especially those at high risk of serious flu complications, check with their health care provider promptly to ask about flu treatment. Flu symptoms can include fever, cough, sore throat, runny or stuffy nose, body aches, headache, chills, and fatigue. Other important ways to manage flu include getting rest and drinking enough water and other clear liquids to prevent dehydration.

BPHC also encourages individuals to wear high-quality, well-fitting masks to prevent the spread of the flu, COVID-19, and RSV during this holiday season.

As residents gather for the holidays, being up to date on COVID-19 and flu vaccines and knowing how to access treatments for both illnesses if you get sick is critical to avoid severe illness and hospitalization. For information about flu treatment, call your healthcare provider. For additional information about flu or support getting a healthcare provider, call the Mayor's Health Line at 617-534-5050.



### Publishers:

Jeff Coakley  
Sue O'Connell

### Editor-in-Chief:

Sue O'Connell  
sue.southendnews@gmail.com

### Editorial Design Manager:

Julie Walker Palmer

### Contributing Writers:

Michele D. Maniscalco  
Dog Lady

### Display Advertising:

Jeff Coakley  
jcoakley@southendnews.com

### Classified Advertising:

sales@southendnews.com

### Letters to the editor:

letters@southendnews.com

### Calendar listings:

senccalendar@southendnews.com

© 2022 South End News Inc.  
PO BOX E14,  
Boston, MA 02127

The **South End News** is a copyrighted publication. Any stories or photos contained herein may not be reproduced in whole or in part without the express written permission of the publisher. The **South End News** will not assume financial responsibility for typographical errors in advertisements. Questions or complaints regarding advertising must be sent in writing to the billing department within seven days of publication in order for adjustments to be made to the account. We reserve the right to use our discretion in accepting or rejecting advertising copy. **South End News** is not responsible for damages due to typographical errors, except for the cost of replacing ads that have typographical errors caused by our negligence. **South End News** is published every other Thursday.

www.southendnews.com

Facebook & Twitter  
@southendnews



### Letters policy

To be considered for publication, letters must be no longer than 500 words; refrain from extreme personal attacks; be signed and include an address and daytime telephone number. Writers should refrain from making incorrect statements since they may be barred from future issues. Deadline is noon Tuesday for Thursday's paper. To send us letters: Mail to PO BOX E14, Boston, MA 02127; E-mail: letters@southendnews.com

**LOEG**

**LAW OFFICES**  
**Donald E. Green, P.C.**

# Everyone is going **GREEN!**

For all your legal needs, call the Law Offices of Donald E. Green.

We concentrate on personal injury matters as well as criminal defense, civil rights, immigration matters, wills & trusts, Chapter 7 bankruptcy, real estate and sexual harassment claims.

Please call **Attorneys Don or Annette Green**

at (617) 442-0050 or  
email [dgreen@donaldegreen.com](mailto:dgreen@donaldegreen.com)  
or [agreen@donaldegreen.com](mailto:agreen@donaldegreen.com)

**After more than 30 years  
in Dudley Square  
we have moved.**

**Washington Park Mall (less than a mile  
from our previous location)**



**Don Green**

**330 Martin Luther King  
Boulevard, Roxbury**



**Annette Green**



# NOW HIRING PACK LEADERS in Brookline & Brighton!

Contact us at  
[djdogservices@gmail.com](mailto:djdogservices@gmail.com)  
 for more information!

**Dog walking & more!**

[www.DJDogServices.com](http://www.DJDogServices.com)



## Residential / Commercial

*“When it comes to painting and carpentry,  
 we’re the Angels you’ve been looking for.”*

**Cell: (781) 640-5590**

**Office: (508) 270-6841**

**Tim@angelpainting.net**

**www.angelpaintinginc.com**

## CRIME

*Continued from page 1*

receive a response. Officers gained entry to the apartment and discovered a victim nonviable.

Officers made verbal contact with a second individual inside the apartment and a Code 99 was declared. Boston SWAT officers entered the apartment and were met with a physical threat. Officers used de-escalation tactics and eventually use of less lethal force was deployed by officers.

At that time, the suspect dove out a 12th floor window but was caught up and was hanging from the window. SWAT officers were able to enter an apartment on the 11th floor and pull the suspect through the window. The suspect was secured and transported to a local hospital suffering from non-life-threatening injuries.

The Boston Police Department is actively reviewing the facts and circumstances surrounding this incident. Anyone with information is strongly urged to contact Boston Police Homicide Detectives at (617) 343-4470.

Community members wishing to assist this investigation anonymously can do so by calling the CrimeStoppers Tip Line at 1 (800) 494-TIPS or by texting the word ‘TIP’ to CRIME (27463). The Boston Police Department will stringently guard and protect the identities of all those who wish to help this investigation in an anonymous manner.

## 17 Year-Old Arrested in Possession of a Loaded Firearm

**After a Traffic Stop in the South End**

**FROM BOSTON POLICE  
 DEPARTMENT REPORT**

At about 10:15 PM, on Saturday, December 3, 2022, officers assigned to District D-4 (South End), initiated a traffic stop in the area of Washington Street and Rutland Street that resulted in the firearm arrest of a 17-year-old male juvenile from Boston.

While on patrol, officers observed a motor vehicle without its lights illuminated, traveling on Washington Street near West Dedham Street. Officers activated their emergency lights and sirens to safely stop the motor vehicle. Officers made contact with the licensed driver and after further investigation recovered a loaded firearm from the male juvenile passenger. The firearm was determined to be a 9mm loaded with one round in the chamber and fifteen rounds in the magazine.

The 17-year-old male was arrested and charged with: Delinquent to wit; Unlawful Possession of a Firearm and Delinquent to wit; Unlawful Possession of Ammunition.

## WGBH

*Continued from page 1*

Fellowship.

“From ensuring that our children’s programming remains an educational and innovative facet of our institution to creating world-renowned science and technology media that demystifies the concepts that define our lives, these three producers have gone above and beyond to expand the possibilities of public media,” said GBH President and CEO Jon Abbott. “I’m proud that GBH continues to celebrate the ingenuity of its talent and to acknowledge the quality content produced across various platforms.”

Caitlin Saks of Boston’s South End was selected as the Peter S. McGhee Fellow. Named for GBH’s former head of national programming, the McGhee Fellowship is awarded each year to a mid-career filmmaker who has shown exceptional promise in non-fiction television production and who adheres to the standards set by McGhee, including excellence, intelligence, fairness, passion and scholarship.

Saks is a producer for the science documentary series NOVA where she works on

both long-form broadcast films and short-form digital-first content. Much of her work has focused on climate and environmental topics. She was NOVA’s senior producer on Arctic Drift and Can We Cool the Planet? She also produced and co-hosted NOVA’s digital series Antarctic Extremes, hosted its online companion game, The Polar Lab, co-produced NOVA’s Emmy-nominated television special on climate change, Decoding the Weather Machine, and co-produced the virtual reality experience Greenland Melting. She also produces content on a variety of other science topics, including the five-part series NOVA Universe Revealed, the short documentary Gene-Editing Reality Check, and the duPont-Columbia Award-winning Decoding COVID-19. Before joining NOVA, Saks worked on films for FRONTLINE, including League of Denial, The Choice 2012, and Money, Power, and Wall Street. She has a Bachelor of Arts in Earth Science and Media from Harvard University.

Biz Thorsen of Cumberland, Rhode Island was selected as the Becton Fellow. Yati Baey Evans, Creative Producer for GBH’s award-winning series, Molly of Denali, was selected as the Margret and Hans Rey Fellow.

## Torch

*Continued from page 3*

Arnold and Ma face off is the kind of fully realized acting that theater students should study.

Cristhian Mancinas-Garcia captures Ed’s emotional conflict and sexual confusion as well as his essentially loving concern for Arnold. Janis Hudson makes Laurel properly grounded and tenacious yet fair. Jack Manning catches Alan’s exuberance and vulnerability.

Jack Mullen has all of David’s appealing energy and striking outspokenness, though he may look older than his 16 year old character to some theatergoers.

Songs by such seminal artists as Billie Holiday, Blossom Dearie and Dinah Washington—with thematically connected lyrics—effectively punctuate scene changes.

Moonbox’s vibrant “Torch Song” has the kind of fearless and loving delivery that makes it a must-hear for all audiences.

# SERVICE GUIDE

## MASONRY



### P. Stones Contracting, Inc.

Specializing in Historic Restoration,  
Brick Repointing, Brick, Block, Stone,  
Basement Floors, Caulking & Waterproofing.

Ornamental window sills, window headers and moldings,  
Fully Licensed and Insured, 15 years of satisfied customers and referrals.

Office: 781-848-6922 • Fax: 781-848-6923  
Cell: 617-592-0850 • pstonescontracting@hotmail.com



## Letters Policy

The South End News welcomes letters to the editor.

All letters must be signed and accompanied by a mailing address and phone number.

Because of space limitations, letters should not be more than 200 words.

e-mail: letters@southendnews.com

## SOUTHEND APARTMENTS FOR RENT

Professionally Managed Building  
with Elevator and Laundry

Next to Blackstone and Franklin Square Park

1 BEDROOM  
STARTING AT  
**\$2,275**  
MONTHLY

2 BEDROOMS  
STARTING AT  
**\$2,500**  
MONTHLY

Heat & Hot Water Included.  
First and Last Month Rent Required.

Call 617-364-5000  
or email pannie@geraghtyassoc.com

## LEGAL NOTICES

### DIVORCE SUMMONS BY PUBLICATION AND MAILING

Commonwealth of Massachusetts  
The Trial Court  
Probate and Family Court  
Docket No. SU22D1940DR

Raquel M. Garcia vs. Francisco Alcantara

To the Defendant:  
The Plaintiff has filed a Complaint for Divorce requesting that the Court grant a divorce for IRRETRIEVABLE BREAKDOWN  
This complaint is on file at the Court.

Suffolk Probate & Family Court  
24 New Chardon Street  
Boston, MA 02114

An Automatic Restraining Order has been entered in this matter preventing you from taking any action which would negatively impact the current financial status of either party. SEE Supplemental Probate Court Rule 411.

You are hereby summoned and required to serve upon:  
Raquel M. Garcia  
18 Logan Way  
Boston, MA 02127

your answer, if any, on or before 01/17/2023. If you fail to do so, the court will proceed to the hearing and adjudication of this action. You are also required to file a copy of your answer, if any, in the office of the Register of this Court.

WITNESS, Hon. Brian J. Dunn, First Justice of this Court.  
Date: November 22, 2022 Felix D. Arroyo, Register of Probate

### CITATION GIVING NOTICE OF PETITION FOR APPOINTMENT OF GUARDIAN FOR INCAPACITATED PERSON PURSUANT TO G.L. c. 190B, Section §5-304

Commonwealth of Massachusetts  
The Trial Court  
Probate and Family Court  
Docket No. SU22P2753GD

In the matter of: Charles Ingemi RESPONDENT  
Of: Boston, MA Alleged Incapacitated Person

To the named Respondent and all other interested persons, a petition has been filed by Boston Medical Center of Boston, MA in the above captioned matter alleging that Charles Ingemi is in need of a Guardian and requesting that (or some other suitable person) to be appointed as Guardian Without Surety on the bond.

Suffolk Probate and Family Court  
24 New Chardon Street  
PO Box 9667  
Boston, MA 02114

The petition asks the court to determine that the Respondent is incapacitated, that the appointment of a Guardian is necessary, and that the proposed Guardian is appropriate. The petition is on file with the court and may contain a request for specific authority.

You have the right to object to this proceeding. If you wish to do so, you or your attorney must file a written appearance at this court on or before 10:00 A.M. on the return date of 01/26/2023. This day is NOT a hearing date, but a deadline date by which you have to file the written appearance if you object to the petition. If you fail to file the written appearance by the return date, action may be taken in this matter without further notice to you. In addition to filing the written appearance, you or your attorney must file a written affidavit stating the specific facts and grounds of your objection within 30 days after the return date.

**IMPORTANT NOTICE**  
The outcome of this proceeding may limit or completely take away the above-named person's right to make decisions about personal affairs or financial affairs or both. The above-named person has the right to ask for a lawyer. Anyone may make this request on behalf of the above-named person. If the above-named person cannot afford a lawyer, one may be appointed at State expense.

WITNESS, Hon. Brian J. Dunn, First Justice of this Court.  
Date: December 12, 2022 Felix D. Arroyo, Register of Probate

## ELECTRICAL



PROVIDING QUALITY  
ELECTRICAL SERVICES  
to the BOSTON AREA

RESIDENTIAL & COMMERCIAL  
FREE ESTIMATES  
24 HOUR SERVICE

Dedicated to Customer Service since 1971

617.542.2000  
www.ds-electric.com

Mass License #14580A

## CLEANING

### Spring Cleaning For All Seasons

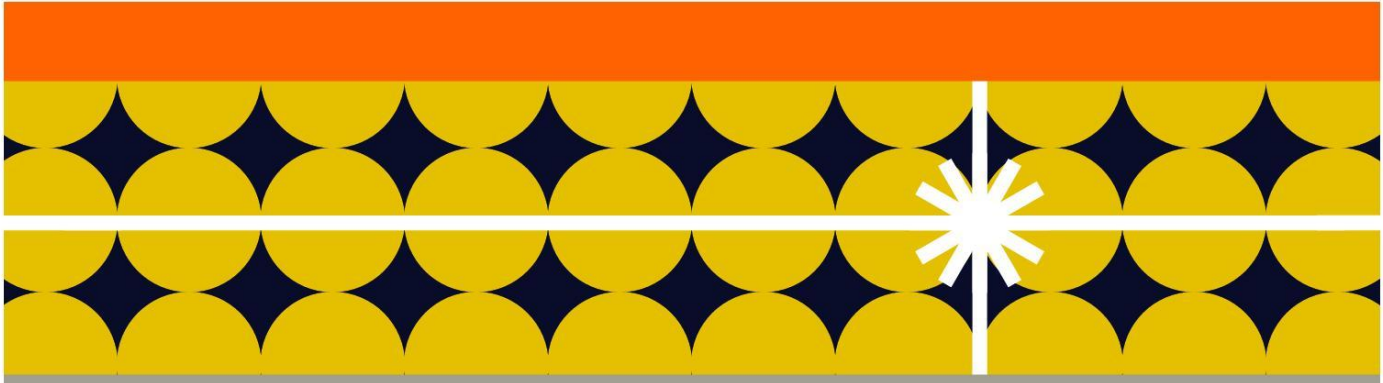
- Trustworthy cleaning services to meet your needs
- Houses, apartments and commercial
- Schedule that works best for you, weekly, bi-weekly, or monthly
- All routine housework, plus special clean-up jobs
- Owner supervised cleaning crew and ensures quality
- Excellent references and competitive rates



Cleaning by Judy  
**617-895-7472**

Advertise your property in the  
**South End News!**

For more information email sales@southendnews.com



# MEET ME IN THE CITY

Make merry with our city's vibrant and diverse restaurants, shops, and events. Explore at [allinclusivebos.com](https://allinclusivebos.com).



CITY of BOSTON

