

GUEST OPINION

Domestic violence programs respond to the death of José Aponte

SUBMITTED BY CASA MYRNA, THE NETWORK/LA RED, JANE DOE INC.

The alleged domestic violence homicide of José Aponte, 43, in his Roxbury home on December 11, 2022, underscores the need for broader education and awareness

about intimate partner abuse in lesbian, gay, bisexual, transgender, and queer (LGBTQ+) communities. Aponte, who was found dead during a wellness check that day, was dating Michael Perry, 37, who has been arraigned in Boston

Continued on page 4

SOUTH END HONOR ROLL

Lasell University

Carrie He of Boston named to Lasell University Dean's List, presents at Lasell University Career Readiness Symposium

Carrie He, a Lasell University student from Boston, was named to the Dean's List for their academic performance in the fall 2022 se-

mester. To be named to the Dean's List, Lasell students must complete at least 12 credits as a full-time student and achieve a semester GPA of 3.5 or higher.

Carrie He also presented at

Continued on page 7

BGCB Names New Executive Director Of The Edgerley Family South Boston Club

SUBMITTED BY BGCB

Boys & Girls Clubs of Boston (BGCB) has named Joshua Davis as the new executive director of the Edgerley Family South Boston Club after over two decades with the organization. Davis replaces Harry Duvall, who was involved with the Club for 18 impactful years before moving on to a new opportunity.

Davis will use his wealth of experience and relationships to build upon the South Boston Club's foundation in providing enriching resources, facilities and opportunities to South



Senior Director of Operations, Joshua Davis. Photo courtesy of Boys & Girls Clubs of Boston.

Continued on page 7

Thirteen BPS Students Selected As 2023 Posse Foundation Scholars



Students Represent 11 Boston Public Schools; Reside in Dorchester, East Boston, Hyde Park, Jamaica Plain, Mattapan, Roxbury, the South End, and West Roxbury. Photo Credit: Dana J. Quigley Photography

SUBMITTED BY BPS

Thirteen Boston Public Schools (BPS) students have been awarded four-year, full-tuition merit-based scholarships by the Posse Foundation, totaling \$2.5 million. The 13 BPS seniors are among 51 Boston-area students who will be attending

Bryn Mawr College, Bucknell University, Centre College, Rutgers University, and Union College.

Founded in 1989, Posse identifies public high school students with extraordinary academic and leadership potential, who otherwise might be overlooked by the traditional college-selection process.

Posse places students in supportive, multicultural teams—Posses—of 10 students. Posse Boston honored the BPS scholarship recipients yesterday at Fairmont Copley Hotel at an awards ceremony, and their families, educators and friends joined them.

Continued on page 4

The poetry of Pi



Adi Dixit as Pi and cast members of "Life of Pi" at the American Repertory Theater. (Courtesy Matthew Murphy and Evan Zimmerman for MurphyMade)

Life of Pi, North American debut presented by American Repertory Theater at Loeb Drama Center, Cambridge, through January 29, 2023. (Gerald Schoenfeld Theatre, Broadway, beginning in March) americanrepertorytheater.org or 617-547-8300.

BY JULES BECKER
Contributing Writer

Anyone who has seen "War Horse" knows that puppetry can bring animals to amazing theatrical life. Now a team of puppeteers are bringing the natural world itself to visceral life on stage in the North

Continued on page 5

CHECK FOR BREAKING NEWS DAILY @ [MYSOUTHEND.COM](https://mysouthend.com)

FOLLOW US!
@SOUTHENDNEWS



LIKE
SHARE
FOLLOW

LODEG

LAW OFFICES
Donald E. Green, P.C.

Everyone is going **GREEN!**

For all your legal needs, call the Law Offices of Donald E. Green.

We concentrate on personal injury matters as well as criminal defense, civil rights, immigration matters, wills & trusts, Chapter 7 bankruptcy, real estate and sexual harassment claims.

Please call **Attorneys Don or Annette Green**

at (617) 442-0050 or
email dgreen@donaldegreen.com
or agreen@donaldegreen.com

**After more than 30 years
in Dudley Square
we have moved.**

**Washington Park Mall (less than a mile
from our previous location)**



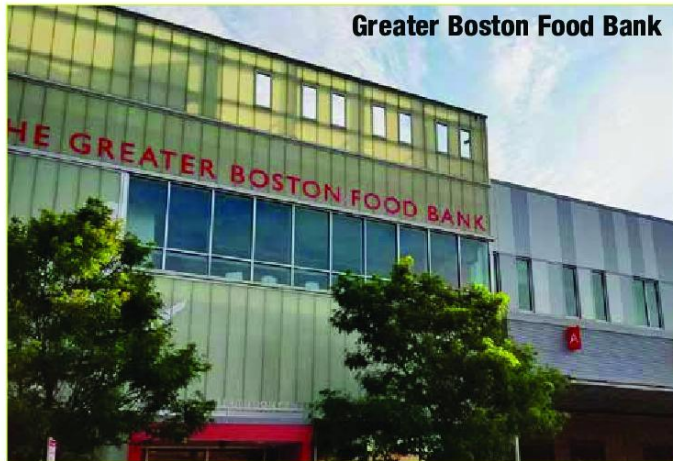
Don Green

**330 Martin Luther King
Boulevard, Roxbury**



Annette Green

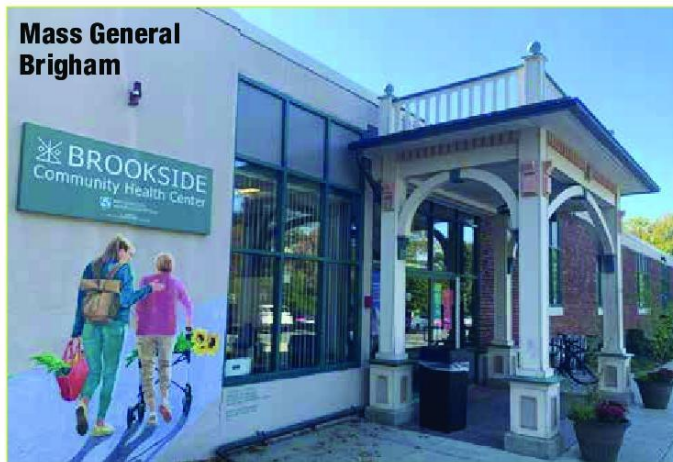
Food Resources



Greater Boston Food Bank

Greater Boston Food Bank (GBFB) partners with 500+ hunger-relief agencies, including food pantries, community meal programs and other food assistance providers throughout the nine counties and 190 towns and cities across Eastern Massachusetts. These

efforts have doubled in the wake of COVID and increased food needs. Visit this page https://www.gbfb.org/need-food/#more_covid_resources for information on food pantries across the state, as well as additional resources for food assistance, including school meal sites.



Mass General Brigham

Free Hot Meals, open to all on Wednesdays, beginning at 11am. Meals will be served until

the food runs out. Brookside Community Health Center, 3297 Washington Street, Jamaica Plain.

Qigong Class With Ella

Participate In Free Fitness Classes Offered By One A Certified Instructor

Every Tuesday until March 7, 2023, 9:00AM - 10:00AM

Qi (energy) Gong (work) is a traditional Chinese meditative, restorative, and self-defense practice that promotes balance, alignment, structural strength, circulation, longevity and mindfulness. It is an essential component of Chinese Martial Arts (Wushu), and Traditional Healing (Zhong Yi) disciplines (which incorporates everything from

acupuncture, to herbal medicine, to exercise/nutrition) based on the principles of the twelve meridians, five elements and holistic balance.

Classes are a partnership between the Boston Parks and Recreation Department and the Boston Public Health Commission. The series is sponsored by Blue Cross Blue Shield of Massachusetts.

Field Bubble, 709 Columbus Avenue, South End



SOUTHEND APARTMENTS FOR RENT

Professionally Managed Building with Elevator and Laundry

Next to Blackstone and Franklin Square Park

1 BEDROOM
STARTING AT
\$2,275
MONTHLY

2 BEDROOMS
STARTING AT
\$2,500
MONTHLY

Heat & Hot Water Included.

First and Last Month Rent Required.

Call 617-364-5000

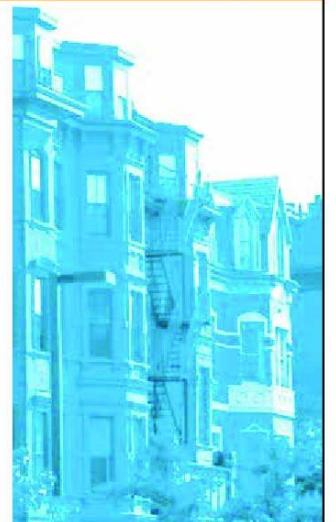
or email pannie@geraghtyassoc.com

Letters Policy

The South End News welcomes letters to the editor.

All letters must be signed and accompanied by a mailing address and phone number.

Because of space limitations, letters should not be more than 200 words.



e-mail: letters@southendnews.com

BPS

Continued from page 1

“As I often say, it takes a village to bring out the best in ourselves and in our communities,” said Superintendent Mary Skipper. “Posses are like small villages, and everyone within them has a particular role that helps keep each member on track so that they can grow over time and have a meaningful impact on their school communities. And if we are lucky enough, they’ll return to Boston Public Schools to make a difference in our students by sharing their talents and brilliance. Posse Scholars are represented on my executive leadership team and amongst school leaders and teachers, and they have a profound effect on the lives of our students because of their own lived experiences.”

Through its traditional program, Posse recruits cohorts of students in Atlanta, the Bay Area, Boston, Chicago, Houston, Los Angeles, Miami, New Orleans, New York, and Washington, D.C. Posse also recruits geographically diverse cohorts through its Virtual Program in Charlotte, Cleveland, Dallas, Denver, Memphis, Newark, Philadelphia, Phoenix and select cities in Indiana, Minnesota, and Virginia.

“We are so proud of these amazing students as they continue their journey through higher education,” said Sakeenah Chapman, Director of the Boston Posse Foundation. “These young people are so inspirational and

we cannot wait to see all of the wonderful things they accomplish. We could not do this without the support of our friends at the Boston Public Schools and we look forward to continued collaboration with BPS as we work to change lives every day.”

The latest cohort of Posse Scholars from BPS represents 11 schools, and they reside in eight neighborhoods in the City: Dorchester; East Boston; Hyde Park; Jamaica Plain; Mattapan; Roxbury; the South End, and West Roxbury.

“This impressive group of students comes from a cross-section of neighborhoods, schools, and backgrounds,” said Boston School Committee Chairperson Jeri Robinson. “They prove schools in our City offer a variety of viable pathways for young people to reach their college dreams.”

The following BPS students have been named Posse Scholars this year:

- Alicia Rose, Jeremiah E. Burke High School
- Beatrice Riley, Boston Latin Academy
- Dario Brandao, Boston Latin School
- Najma Abdi, John D. O’Byran School of Mathematics & Science
- Richemie Chery, Henderson K-12 Inclusion School
- Summer Hession, Another Course to College
- Viviana Wallace, Boston Latin School

Aponte

Continued from page 1

Municipal Court on a charge of first-degree murder. Perry was previously arraigned on a charge of assault with a dangerous weapon. Early news reports focused on the sensational escape attempt by Perry and omitted that the men were in a relationship, thus obscuring that this was domestic violence-related.

“We are deeply saddened by the news of Jose Aponte’s murder and send our condolences to his loved ones,” said Casa Myrna CEO Stephanie Brown. “This preventable tragedy highlights the prevalence of domestic violence in all communities and demonstrates the importance of education and awareness. Partnering with The Network/La Red and Jane Doe Inc., we strive to break the stigma around domestic violence and help survivors feel more empowered to ask for support.”

This is the second suspected LGBTQ+ partner abuse-related homicide in Massachusetts in the past three months. Generally, 25-33% of LGBTQ+ people experience abuse by a partner, much the same rates as in cisgender heterosexual relationships. However, the Massachusetts Department of Public Health’s 2022 “COVID-19 Community Impact Study” noted that experiences of intimate partner violence were reported two to four times more frequently since the start of the pandemic by LGBTQ+ respondents. This is similar to the Human Rights Campaign 2020

report, “LGBTQ Intimate Partner Violence and COVID-19,” that indicated “LGBTQ people have been twice as likely to have experienced an incident of intimate partner violence since the onset of COVID-19. While 68% of the general population sample who have experienced intimate partner violence since the onset of COVID-19 said the pandemic has increased the duration and frequency of such violence, this was greater (77%) among LGBTQ respondents.”

While these reports may focus on physical violence, in reality, what many call “domestic violence” is a much broader constellation of behaviors. “It’s about one person using a pattern of behaviors to maintain power and control over a partner’s thoughts, beliefs, actions, and/or spirit,” said Beth Leventhal, Executive Director of The Network/La Red. “The tactics used to control include emotional and psychological abuse, physical abuse, sexual abuse, financial abuse, and/or cultural/identity abuse.” Abuse can occur in intimate relationships between people of any age, ethnic group, profession, religious affiliation, socioeconomic status, or sexual orientation or gender identity/expression, regardless of whether they are married or living together.

Individuals experiencing abuse are not alone, and there are resources across Massachusetts available to help. Two organizations specialize in working with LGBTQ+ individuals. The Network/La Red works statewide with LGBTQ+ survivors of partner abuse, offering free services including a 24-hour hotline,

- Yasamin Kiani, Boston Latin School
- Jaleel Worrell, Boston Community Leadership Academy
- Chenaya Valeus, Boston International High School
- Andres Blanco, Charlestown High School
- Elianna Soto Martinez, Fenway High School
- Malaika Allen, Community Academy of Science and Health (CASH)

“The Posse Foundation has been instrumental in pushing BPS students to think outside the box and consider attending selective colleges and universities outside of Boston and Massachusetts,” said John D. O’Byran School of Mathematics and Science Student Development Counselor Valdivino Gonçalves. “The Posse Foundation always has been and will continue to be an integral partner to the Boston Public Schools in support of our students and helping them earn a college degree and do amazing things in life.”

Students in the cohort, or Posse model, will meet and befriend their fellow scholars prior to arriving on campus. The Posse staff and network also will support the cohort throughout their time in college, connecting students to jobs and internships and, most importantly, offering a trusting adult who can help triage and support students when they are away from home.

safety planning, support groups, safe home, transitional housing, and individual advocacy and support for LGBTQ+ survivors of partner abuse. Fenway Health’s Violence Recovery Program (VRP) provides free counseling, support groups, advocacy, and referrals to survivors of domestic violence, sexual violence, hate violence, and police misconduct.

“Domestic and sexual violence thrive in silence and often result in isolation and increased vulnerability,” said Toni K. Troop, Director of Communications and Development at Jane Doe Inc. “We urge anyone who is concerned for themselves or someone they know to turn to a trusted advocate at a rape crisis center or domestic violence program to talk about what you need, available resources, and options.”

Casa Myrna, The Network/La Red, and Jane Doe Inc. remain committed to supporting survivors of all sexual orientations and gender identities.

If you are concerned about your relationship or the relationship of a friend or family member, call:

The Network/La Red’s statewide hotline at 1-800-832-1901 or visit www.tnlr.org.

SafeLink, Casa Myrna’s statewide domestic violence hotline, at 1-877-785-2020 or visit www.casamyrna.org.

You can learn more and find help in a community near you at www.janedoe.org/ findhelp.

All calls are free, anonymous, and confidential. You don’t have to leave or even want to leave your partner to get support



Publishers:

Jeff Coakley
Sue O’Connell

Editor-in-Chief:

Sue O’Connell
sue.southendnews@gmail.com

Editorial Design Manager:

Julie Walker Palmer

Contributing Writers:

Michele D. Maniscalco
Dog Lady

Display Advertising:

Jeff Coakley
jcoakley@southendnews.com

Classified Advertising:

sales@southendnews.com

Letters to the editor:

letters@southendnews.com

Calendar listings:

sencalendar@southendnews.com

© 2023 South End News Inc.

PO BOX E14,
Boston, MA 02127

The South End News is a copyrighted publication. Any stories or photos contained herein may not be reproduced in whole or in part without the express written permission of the publisher. The South End News will not assume financial responsibility for typographical errors in advertisements. Questions or complaints regarding advertising must be sent in writing to the billing department within seven days of publication in order for adjustments to be made to the account. We reserve the right to use our discretion in accepting or rejecting advertising copy. South End News is not responsible for damages due to typographical errors, except for the cost of replacing ads that have typographical errors caused by our negligence. South End News is published every other Thursday.

www.southendnews.com

Facebook & Twitter
[@southendnews](https://www.facebook.com/southendnews)



Letters policy

To be considered for publication, letters must be no longer than 500 words; refrain from extreme personal attacks; be signed and include an address and daytime telephone number. Writers should refrain from making incorrect statements since they may be barred from future issues. Deadline is noon Tuesday for Thursday’s paper. To send us letters: Mail to PO BOX E14, Boston, MA 02127; E-mail: letters@southendnews.com

Pi

Continued from page 1

American debut of “Life of Pi” at American Repertory Theater’s Loeb Drama Center. That Olivier Award-winning show vividly represents such diverse creatures as a giraffe, a large turtle, a zebra, an orangutan, a hyena and a tiger. As with “War Horse,” the animal world—especially the tiger, called Richard Parker—seems to hold its own with humanity.

In fact, the stunningly poetic “Life of Pi” should provoke theatergoers to an inescapable moment of truth about the precariousness of co-existence. Adapted from the acclaimed 2001 Yann Martel novel by Lolita Chakrabarti, directed sharply by Max Webster and graced with vivid puppet design by Nick Barnes and Finn Caldwell, “Life of Pi” has all of the sublime enchantment and breathtaking visual artistry that made “War Horse” a theatrical powerhouse. At the same time, Pi’s harrowing ocean odyssey tale becomes both a unique rite of passage and a Rashomon-recalling quest for truth.

That quest begins in 1978 Mexico as investigators question the accuracy of Pi’s claims about the wreck of the Canada-bound Tsintsum—a cargo ship the Kabbalistic name of which intriguingly refers to a divine contraction of light. The investigators mean to know exactly what happened to his Indian family and the zoo animals that accompanied them and the details of his amazing 227 day struggle as the ship’s sole human survivor. Pi submits that “my story will make you believe in God.”

Of which belief is he talking? Pi’s story includes consideration of Christianity and Islam as well as his family’s Hinduism. There is a moment when his sister, mentioning the word synagogue, speculates that he could even become a Jew. During his ordeal, he does appeal to the gods, though there are striking moments when religions are compared to cages. At other moments, according to Pi, he sees the ferocious yet majestic tiger (as in the wonderful 2012 Ang Lee film) as a major factor in his survival.

Audience members will have to make their own decisions about the truth of Pi’s animal-rich narrative and an alternative version that he offers the skeptical investigators. Adi Dixit, bringing terrific energy and riveting delivery to his storytelling as Pi, captures the young man’s early naiveté and his eventual insight about life and survival. The exquisite design—Tim Hatley’s rich scenic design, Tim Lutkin’s nuanced lighting (especially during moments of storm) and especially the team of gifted puppeteers—brings Pi’s creature-dominated explanation to convincing life. Look for inspired puppetry evocations of butterflies and fish complementing his narrative and most of all the alternately intimidating and vulnerable tiger. (Parents will need to judge whether their younger children will be able to deal with graphic representations of animals killing other animals).

Can humanity and the animal world survive the dangers of climate change and live together in peace? “Life of Pi” provides artistic food for thought as well as spectacular theater.



Insuring your most cherished possessions

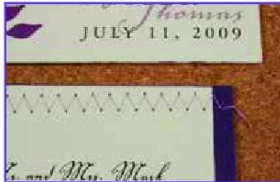


Auto Home Business Condo Pet Insurance

8 Clarendon St Boston 617-437-9400

jjbodner.com

lynn graham designs



o o o o o o o o o o *custom wedding invitations*

- save - the - dates
- programs
- menus
- escort cards

www.lynngrahamdesigns.com o o o o o o o o o o

253 shawmut ave, suite 2a • boston, ma 02118
617.460.2532 • info@lynngrahamdesigns.com

DJ dog
SERVICES

**NOW HIRING
PACK LEADERS
in Brookline & Brighton!**

Contact us at
djdogservices@gmail.com
for more information!

Dog walking & more!
www.DJDogServices.com

SERVICE GUIDE

MASONRY



P. Stones Contracting, Inc.

Specializing in Historic Restoration,
Brick Repointing, Brick, Block, Stone,
Basement Floors, Caulking & Waterproofing.

Ornamental window sills, window headers and moldings,
Fully Licensed and Insured, 15 years of satisfied customers and referrals.

Office: 781-848-6922 • Fax: 781-848-6923
Cell: 617-592-0850 • pstonescontracting@hotmail.com



Letters Policy

The South End News welcomes letters to the editor.

All letters must be signed and accompanied by a mailing address and phone number.

Because of space limitations, letters should not be more than 200 words.

e-mail: letters@southendnews.com

LEGAL NOTICES

CITATION GIVING NOTICE OF PETITION FOR APPOINTMENT OF GUARDIAN FOR INCAPACITATED PERSON PURSUANT TO G.L. c. 190B, §5-304	Commonwealth of Massachusetts The Trial Court Probate and Family Court Docket No. SU22P2867GD
In the matter of: Onyemaechi Aka Jideofe Jideofe Aka Onyemaechi Chika of: Boston, MA RESPONDENT: Alleged Incapacitated Person	
To the named Respondent and all other interested persons, a petition has been filed by Department of Mental Health of Westborough, MA in the above captioned matter alleging that Onyemaechi Aka Jideofe Jideofe Aka Onyemaechi Chika is in need of a Guardian and requesting that Okechukwu Chika of Houston, TX (or some other suitable person) be appointed as Guardian to serve without surety on the bond .	Suffolk Probate and Family Court 24 New Chardon Street PO Box 9667 Boston, MA 02114
The petition asks the court to determine that the Respondent is incapacitated, that the appointment of a Guardian is necessary, and that the proposed Guardian is appropriate. The petition is on file with this court and may contain a request for certain specific authority.	
You have the right to object to this proceeding. If you wish to do so, you or your attorney must file a written appearance at this court on or before 10:00 A.M. on the return date of 01/30/2023. This day is NOT a hearing date, but a deadline date by which you have to file the written appearance if you object to the petition. If you fail to file the written appearance by the return date, action may be taken in this matter without further notice to you. In addition to filing the written appearance, you or your attorney must file a written affidavit stating the specific facts and grounds of your objection within 30 days after the return date.	
IMPORTANT NOTICE	
The outcome of this proceeding may limit or completely take away the above-named person's right to make decisions about personal affairs or financial affairs or both. The above-named person has the right to ask for a lawyer. Anyone may make this request on behalf of the above-named person. If the above-named person cannot afford a lawyer, one may be appointed at State expense.	
WITNESS, Hon. Brian J. Dunn, First Justice of this Court. Date: December 29, 2022 Felix D. Arroyo, Register of Probate	

CITATION GIVING NOTICE OF PETITION TO EXPAND THE POWERS OF A GUARDIAN	Commonwealth of Massachusetts The Trial Court Probate and Family Court Docket No. SU22P1246GD
In the interests of: Keith Lashley Of: Boston, MA	RESPONDENT Incapacitated Person/Protected Person
To the named Respondent and all other interested persons, a petition has been filed by Boston M Center of Boston, MA , in the above captioned matter requesting that the court: Expand the powers of a Guardian.	Suffolk Probate and Family Court 24 New Chardon Street PO Box 9667 Boston, MA 02114
The petition asks the court to make a determination that the powers of the Guardian and/or Conservator should be expanded, modified, or limited since the time of the appointment. The original petition is on file with the Court.	
You have the right to object to this proceeding. If you wish to do so, you or your attorney must file a written appearance at this court on or before 10:00 A.M. on the return date of 02/27/2023. This day is NOT a hearing date, but a deadline date by which you have to file the written appearance if you object to the petition. If you fail to file the written appearance by the return date, action may be taken in this matter without further notice to you. In addition to filing the written appearance, you or your attorney must file a written affidavit stating the specific facts and grounds of your objection within 30 days after the return date.	
IMPORTANT NOTICE	
The outcome of this proceeding may limit or completely take away the above-named person's right to make decisions about personal affairs or financial affairs or both. The above-named person has the right to ask for a lawyer. Anyone may make this request on behalf of the above-named person. If the above-named person cannot afford a lawyer, one may be appointed at State expense.	
WITNESS, Hon. Brian J. Dunn, First Justice of this Court. Date: December 15, 2022 Felix D. Arroyo, Register of Probate	

ELECTRICAL



PROVIDING QUALITY ELECTRICAL SERVICES to the BOSTON AREA

RESIDENTIAL & COMMERCIAL
FREE ESTIMATES
24 HOUR SERVICE

Dedicated to Customer Service since 1971

617.542.2000
www.ds-electric.com

Mass License #14580A

CLEANING

Spring Cleaning For All Seasons

- Trustworthy cleaning services to meet your needs
- Houses, apartments and commercial
- Schedule that works best for you, weekly, bi-weekly, or monthly
- All routine housework, plus special clean-up jobs
- Owner supervised cleaning crew and ensures quality
- Excellent references and competitive rates



Cleaning by Judy
617-895-7472

YOUR AD COULD BE HERE!

Showcase your local business in the

South End News

email Jeff for more information
sales@southendnews.com

BE SURE TO KEEP UP TO DATE WITH REAL NEWS IN YOUR NEIGHBORHOOD AT

MYSOUTHEND.COM

BGCB

Continued from page 1

Boston's young people and families.

"We're thrilled to have such a deserving member of our family move into the executive director role to lead the South Boston Club. Josh will continue to lead our South Boston's youth in an even more prominent role, and further promote our mission of providing new opportunities to invest in our community's urban talent pipeline," said Nicholas President and CEO, Robert Lewis, Jr. "Josh understands the goals of the organization, has established relationships with the community and can motivate both the staff and youth."

Going on his third decade with the organi-

zation, Davis enters his new role with a vast array of knowledge, both internally and externally, through his relationships with numerous BGCB committees and stakeholders. Davis has served many positions within the BGCB organization since 2001 as executive director of operations, Club director, senior director of shared space Clubs, and director of education. Under his leadership with BGCB's shared space Clubs, the staff has executed the organization's mission of preparing its youth to be tomorrow's future leaders and responsible citizens. His ability to form and mold relationships combined with his interpersonal characteristics has allowed BGCB to benefit from partnerships with organizations such as Boston After School & Beyond, After School and Out of School, Boston Public

Health's Violence Intervention Program and Boston Public Schools. He had a profound impact on the Condon South Boston Club by facilitating the Ready to Work Academy, which has helped hundreds of members prepare for a career after graduation. His work has positively transformed the lives of thousands of past and present members.

"It is an honor to return to the South Boston Club and community that welcomed me 21 years ago to work alongside and lead a talented staff as we work diligently on behalf of the next generation of leaders in our community," said Davis. "Club members often refer to the Club as their second home, and I am forever motivated by the opportunity to create a haven filled with opportunity, joy, and

a sense of belonging for our city's youth. I can't wait to begin working with our local Advisory Board, key stakeholders, partners, and of course, our amazing staff, as we provide life changing experiences for our members."

As Duvall stepped down, many Club families and parents were relieved to hear the news of Davis's hiring.

"As a Trustee and Club parent, I am very excited for Josh to bring his leadership and knowledge of the community to the Southie Club," said LeeAnn Manning, a South Boston Club parent and BGCB Trustee. "His thoughtful, strategic leadership of our shared space Clubs and history with the organization provides a strong platform for all he will accomplish in South Boston."

Honor Roll

Continued from page 1

the institution's annual Career Readiness Symposium.

He delivered, "Psi Chi Presents: The Everyday Use of Psychology in our Lives," a presentation on the events and information sessions held at Lasell to help students take care of their mental and physical health, as well as prepare for careers after college. The presentation incorporated the NACE competencies of equity & inclusion, professionalism, career & self-development, and civic & community engagement.

He also facilitated a co-curricular event for the community, "African Diaspora Day," which celebrated the cultural disconnectedness of Black ethnic groups across the globe as part of their final project in a course on Black psychology. They worked with their peers to implement the day's various activities, including a keynote speaker on Black health, "education stations" to share

what they have learned in the course, and a Black/African-American-owned vendor and food marketplace from the Greater Boston community.

Lasell's Career Readiness Symposium takes place every fall and asks students to present original research, projects, or field skills that align with core career competencies shared by the National Association of Colleges and Employers (NACE). Part of the Symposium's goal is to collectively assist students in identifying and pursuing opportunities that allow them to become proficient in those areas as preparation for successful transitions into the workplace.

This year's Symposium "celebrated student scholarship and discovery," said Provost Eric Turner. "The energy and excitement generated from experiencing this event at Lasell is extraordinary."

St. Lawrence University

St. Lawrence University welcomed Caroline C. Fisher of Boston as a member

of the Class of 2026. Fisher attended Thayer Academy.

Thirty-eight percent of students ranked in the top 10 percent of their respective graduating high school classes, and 70 percent were in the top quarter.

Members of the class come from 394 high schools across 32 states and Washington, D.C. Diversity-meaning those who identify as people of color or international students-is at 24 percent. Gender representation is 53 percent women, 46 percent men, and 1 percent non-binary. Sixteen percent of the class are considered first-generation students-students whose parents did not complete a four-year college or university degree-and nearly 17 percent have family ties that connect them to St. Lawrence, including siblings, parents, and grandparents. Eleven percent of students hail from the North Country.

Colgate University

Nya Herron, a member of the Colgate

University Class of 2023, has earned the spring 2022 Dean's Award with Distinction. Herron is a Political Science major from Boston and is a graduate of Williamsville East High School.

Students who receive a term grade point average of 3.6 or higher while completing at least three courses during the spring 2022 semester earn the Dean's Award with Distinction.

Southern New Hampshire University

Tracey Kirkman and Rafael Garcia, both of Boston, have been named to Southern New Hampshire University's Summer 2022 President's List. The summer terms run from May to August.

Full-time undergraduate students who have earned a minimum grade-point average of 3.700 and above for the reporting term are named to the President's List. Full-time status is achieved by earning 12 credits over each 16-week term or paired 8-week terms grouped in fall, winter/spring, and summer.

Get local and advertise your property in the *South End News*.

Email Jeff at sales@southendnews.com

Smile Craft

Changing Lives
One Smile at a time



Dr. Harry P. Treon
DMD



Dr. Christopher Treon
DMD



At Smile Craft, our philosophy is to provide treatment to the whole person - with a special focus on how your teeth and gums relate to your total body health. We want you to be confident that your smile achieves your goals for comfort, function and appearance. We're here to make that happen.

Relax with confidence at Smile Craft. We're your neighbors and we're here to help you maximize the health of your smile.



General Dentistry



Teeth Whitening



Fillings



Dental Implants

Visit us online or call
to make an appointment

(857) 317-3030

www.smilecraftsouthend.com

22 Traveler Street, Boston, MA 02118