

### Pride marches through the South End

Three arrests at Parade

BY SOUTH END NEWS STAFF

Over 1 million people visited Boston for the Pride celebrations, which featured a parade, a festival on Boston Common, and a block party at City Hall Plaza, according to Boston Pride for the People (BP4TP) organizers. The festival on the Common boasted an entertainment



Continued on page 3

Photo by South End News Staff.

### Developer proposes turning old Boston Medical Center office and lab building into residences

COURTESY ADAM GAFFIN, www.universalhub.com

A developer has filed plans to convert and expand a former Boston Medical Center office building at 615 Albany St. into 24 residential units, through renovation of the existing floors and the addition of one new floor.

Developer Gregory McCarthy is hoping to gain a tax break intended for conversion of office space into residential units - but in downtown, rather than in the South End.

McCarthy bought the building for



Continued on page 6

Rendering by Studio47.

### Mayor Wu Announces the 2024 Legacy Business Award Winners

SUBMITTED BY THE OFFICE OF MAYOR MICHELLE WU

On Wednesday, May 29, Mayor Michelle Wu announced the winners of the 2024 Legacy Business Awards, a group of 30 businesses representing 19 of Boston's neighborhoods, and, as a collective, have been in business for 1,281 years. The awardees will receive recognition at a public awards ceremony on Tuesday, June

4th at 5:30pm. Awardees will have access to grant support and technical assistance.

This is the second year of the Legacy Business Program. Awarded businesses are longstanding, independent enterprises that make a strong contribution to the residents, communities, and neighborhoods of Boston. By recognizing and supporting Legacy businesses on an annual basis, the Program helps

further Mayor Wu's vision for a family-friendly, vibrant city with sustainable community businesses.

"Our legacy businesses are anchors in our communities. They connect residents with resources, and expand access to opportunity for families across Boston," said Mayor Michelle Wu. "I'm thrilled to announce the second class of

Continued on page 4

### Yellow Face addresses prejudice and understanding

Yellow Face, Lyric Stage Company of Boston, 140 Clarendon Street, Boston, through June 23. 617-585-5678 or lyricstage.com



Michael Hisamoto as DHH in "Yellow Face" at Lyric Stage Company of Boston. Photo-MARK HOWARD

BY JULES BECKER Contributing Writer

Have Asian-American performers struggled to gain roles on New York stages? In 1990 David Henry Hwang—the Tony Award-winning playwright of "M. Butterfly" (1988)—protested the casting of a non-Asian actor (Jonathan Pryce) as the Engineer in the Broadway production of "Miss Saigon" and the use of yellow face make-up and pros-

thetics. Actors Equity initially agreed with the Asian-American dramatist's objection only to eventually reverse its stance—with Pryce winning a 1991 Tony for the role.

Inspired in part by the "Miss Saigon" controversy, Hwang wrote a media farce dealing with race and identity entitled "Face Value" (1993) that re-

Continued on page 6

### EdVestors Announces \$485,000 in Arts Expansion Grants to Boston Public Schools

SUBMITTED BY EDVESTORS

EdVestors, a Boston-based school improvement organization, on Monday June 10, awarded \$485,000 in grants to over 30 nonprofits working with 60 Boston Public Schools (BPS) to support equitable, quality arts education for the 2024-2025 school year.

In the South End, Blackstone Elementary and Melvin H. King South End Academy will benefit from their partnerships with local arts organizations, including Art Resource Collaborative for Kids (ARCK), Boston Music Project, and The Huntington Theatre. Through these grants, South End students will

continue to receive a robust, quality arts education

Since its inception in 2009, BPS Arts Expansion has increased the number of BPS students receiving arts education by nearly 17,000 annually, establishing Boston as a national leader in expanding access to arts education.

"The importance of BPS Arts Expansion and its tangible impact on students cannot be overstated," said Mary Skipper, Superintendent of Boston Public Schools. "I am grateful for the ongoing partnership between the BPS, EdVestors, funders, and so many others that has made progress

Continued on page 6



# MOH INCOME RESTRICTED RENTAL OPPORTUNITY

Pok Oi • 288 Harrison Avenue, Boston, MA 02111

## 85 Income-restricted Units

9 units are Homeless Set-asides that are NOT in the lottery				
# of Units	# of bedrooms	Estimated Square Feet	Rent	Maximum Income Limit
4	1	625-631	30% of HH Income	30% AMI
4	2	846-890	30% of HH Income	30% AMI
1	3	1028	30% of HH Income	30% AMI

9 ((4) 1BR, (4) 2BR and (1) 3BR) Homeless Set-aside units will be filled through direct referral from HomeStart. For more information, please contact us at the email address or phone number below. For direct referrals, please visit <https://www.homestart.org/bostonhsa>

76 Income-restricted units IN THE LOTTERY						
# of Units	# of bedrooms	Estimated Square Feet	Rent	Maximum Income Limit	# built out for mobility impairments	# built out for Deaf/hard of hearing
4	2	846-890	30% of HH Income	30% AMI	-	-
4	3	1011-1028	30% of HH Income	30% AMI	-	-
11	1	625-642	\$1,530	50% AMI	1	1
13	2	846-890	\$1,836	50% AMI	3	1
4	3	1011-1028	\$2,121	50% AMI	1	1
7	1	625-631	\$1,836	60% AMI	1	1
9	2	846-890	\$2,203	60% AMI	1	-
2	3	1011-1015	\$2,546	60% AMI	1	-
8	1	625-640	\$2,448	80% AMI	1	-
10	2	847-890	\$2,938	80% AMI	-	-
4	3	1011-1028	\$3,395	80% AMI	-	-

\*Rent will be reduced by the electricity allowance with tenant payment. For more information, contact us at the phone number listed below.

Minimum Incomes (set by owner + based on # of bedrooms + Area Median Income (AMI))				
# of BR	30% AMI	50% AMI	60% AMI	80% AMI
1	N/A	\$45,900	\$55,080	\$73,440
2	N/A	\$55,080	\$66,090	\$88,140
3	N/A	\$63,630	\$76,380	\$101,850

Maximum Incomes (set by HUD/MOH + based on household size + Area Median Income (AMI))				
# of BR	30% AMI	50% AMI	60% AMI	80% AMI
1	\$34,260	\$57,100	\$68,520	\$91,360
2	\$39,180	\$65,300	\$78,360	\$104,480
3	\$44,070	\$73,450	\$88,140	\$117,520
4	\$48,960	\$81,600	\$97,920	\$130,560
5	\$52,890	\$88,150	\$105,780	\$141,040
6	\$56,820	\$94,700	\$113,640	\$151,520

Minimum Incomes Apply. Minimum incomes do not apply to households with housing assistance (Section 8, MRVP, VASH) or for the units in this development that include a project-based voucher.

Applications are available during the application period for 43 days, from Monday, June 3, 2024 - Monday, July 15, 2024.  
**Applications are available in person on the following days, dates, and times at 232 Harrison Avenue, Boston, MA 02111**  
 Saturday: 6/22/2024 from 10AM - 2PM; Thursday: 6/27/2024 from 3PM - 7PM; Saturday: 7/6/2024 from 10AM - 2PM

To request an online application or to have one sent by email, visit [www.livepokoi.com](http://www.livepokoi.com) or [pokoi@beaconcommunitiesllc.com](mailto:pokoi@beaconcommunitiesllc.com).

We will hold our first informational meetings on **06/11/2024 at 10:00 AM at 232 Harrison Avenue, Boston, MA 02111**. Join virtually, too, through the following link: <https://beaconcommunitiesllc.zoom.us/j/86402431442?pwd=7XrtXoQJVKfF04cyu6tc0g1dLW150.1> Passcode: 777538 Or join by phone: 646-558-8656  
**Webinar ID: 864 0243 1442**

We will hold a second informational meeting on **06/12/2024 at 5:00 PM at 1344 Hyde Park Avenue, Hyde Park, MA 02136**. Join virtually, too, through the following link: <https://beaconcommunitiesllc.zoom.us/j/86402431442?pwd=7XrtXoQJVKfF04cyu6tc0g1dLW150.1> Passcode: 777538 Or join by phone: 646-558-8656  
**Webinar ID: 864 0243 1442**

**DEADLINE:** Applications must be submitted online or postmarked no later than **Monday, July 15, 2024**. Mailed to **232 Harrison Avenue, Boston, MA 02111**

- Selection by Lottery.
- Asset & Use Restrictions apply.
- Preferences Apply.

For more information, language assistance, or reasonable accommodations for persons with disabilities, please call **617-609-8420** or email [PokOi@beaconcommunitiesllc.com](mailto:PokOi@beaconcommunitiesllc.com)



# Pride

Continued from page 1

stage and more than 200 vendors.

This year's theme is "Still Here." From Boylston Street to Boston Common, pride flags were everywhere, supporting the parade and festival, which is the largest event of its kind in New England.

Boston Mayor Michelle Wu, Massachusetts Governor Maura Healey, Lt. Governor Kim Driscoll, U.S. Senators Elizabeth Warren and Ed Markey were part of the 10,000 marchers who participated in the parade.

Liberate Boston Pride organized a stationary protest at the intersection of Berkeley and St. James Streets to protest BP4TP's corporate sponsorships from Delta Airlines, State Street, and Fidelity. Liberate Boston Pride's website says they are "unethical companies". The group also cited the goal to to publicly support Palestine and the removal of police officers from the parade as motivations for the protest.

Boston Police reported no injuries but confirmed three arrests at the parade.

The Boston Pride for the People Parade remains the largest pride parade in New England.



Photos by South End News Staff.



Insuring your most cherished possessions



Auto Home Business Condo Pet Insurance

8 Clarendon St Boston 617-437-9400  
jjbodner.com

**LDG**

LAW OFFICES  
Donald E. Green, P.C.

## Everyone is going GREEN!

For all your legal needs, call the Law Offices of Donald E. Green.

We concentrate on personal injury matters as well as criminal defense, civil rights, immigration matters, wills & trusts, Chapter 7 bankruptcy, real estate and sexual harassment claims.

Please call **Attorneys Don or Annette Green**

at (617) 442-0050 or  
email [dgreen@donaldegreen.com](mailto:dgreen@donaldegreen.com)  
or [agreen@donaldegreen.com](mailto:agreen@donaldegreen.com)

After more than 30 years  
in Dudley Square  
we have moved.

Washington Park Mall (less than a mile  
from our previous location)

330 Martin Luther King  
Boulevard, Roxbury



Don Green



Annette Green



# Dr. Jonathan K. Jefferson Named 18<sup>th</sup> President of Roxbury Community College

SUBMITTED BY RCC

Dr. Jonathan K. Jefferson has been selected as Roxbury Community College's (RCC's) next president. Dr. Jefferson, who was unanimously nominated by RCC's Board of Trustees and approved by the MA Board of Higher Education, brings more than 30 years of experience in strategic planning, academic leadership, consulting expertise, and a dedication to fostering leadership development to the RCC community.

"RCC's Trustees are confident that Dr. Jefferson has the leadership, knowledge, skills and determination needed to position RCC for growth and long-term success," said Sheriff

Steven Tompkins, RCC Board of Trustees Chair. "We look forward to working with Dr. Jefferson, the internal RCC community, and RCC's vast network of external supporters to ensure that RCC remains a beacon of affordable, quality education."

Dr. Jefferson's professional journey has evolved from technical, consulting, and strategic planning roles to influential academic administration roles. Before joining RCC, Dr. Jefferson served as Chief Academic Officer and Provost at Lesley University, where he played a key role in evolving the landscape of business education and leadership. Dr. Jefferson has also served as Director of the Institute for Leadership at the US Coast Guard Academy, and Dean of the Schools of Business at Clark Atlanta University and Albany State University, where he led initiatives to elevate academic programs, advance faculty development, and enhance student success. As Chair of the Faculty Assembly, he pursued governance and curriculum innovation excellence.

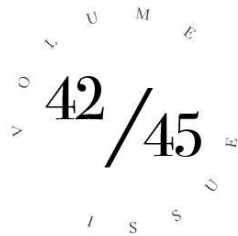
"I am humbled and honored to join Roxbury Community College as its 18th President," said Dr. Jonathan K. Jefferson. "I am excited to collaborate with the Board of Trustees, faculty, staff, students, and the broader community to shape this esteemed institution's next chapter of success. I extend my heartfelt gratitude to Interim President Jackie Jenkins-Scott for her

exemplary leadership, which has positioned RCC to continue its vision of empowering the community with an education that matters."

Dr. Jefferson has also contributed his expertise to various boards and accreditation bodies, such as the Accreditation Council for Business Schools and Programs (ACBSP), the Association to Advance Collegiate Schools of Business (AACSB) and the New England Commission on Higher Education (NECHE). Through these roles, he had the opportunity to impact the quality and reach of business education and institutional excellence.

Dr. Jefferson will work alongside departing Interim President Jackie Jenkins-Scott to provide a smooth transition. "It has been wonderful leading RCC over the past two and a half years, and I know that Dr. Jefferson will work diligently to ensure RCC's continued success," said Jenkins-Scott. "I look forward to working alongside Dr. Jefferson throughout the transition and to supporting the College for years to come."

Dr. Jefferson holds a bachelor's degree in mathematics from Morehouse College, a Master of Engineering from Cornell University, a Master of Science from Capella University, and a Doctor of Management from Colorado Technical University. Dr. Jefferson will formally join the RCC community as president on July 1, 2024.



**Publishers Emeritus:**

Jeff Coakley  
Sue O'Connell

**Editor-in-Chief:**

Sue O'Connell  
sue.southendnews@gmail.com

**Editorial Design Manager:**

Julie Walker Palmer

**Contributing Writers:**

Julie Becker

**Letters to the editor:**

letters@southendnews.com

**Calendar listings:**

sencalendar@southendnews.com

**Display Advertising:**

sales@baywindowns.com

**Classified Advertising:**

sales@southendnews.com

© 2024 South End News Inc.

PO BOX E14,  
Boston, MA 02127

The South End News is a copyrighted publication. Any stories or photos contained herein may not be reproduced in whole or in part without the express written permission of the publisher. The South End News will not assume financial responsibility for typographical errors in advertisements. Questions or complaints regarding advertising must be sent in writing to the billing department within seven days of publication in order for adjustments to be made to the account. We reserve the right to use our discretion in accepting or rejecting advertising copy. South End News is not responsible for damages due to typographical errors, except for the cost of replacing ads that have typographical errors caused by our negligence.

South End News is published every other Thursday.

www.southendnews.com

Facebook & X

@southendnews



**LETTERS POLICY**

To be considered for publication, letters must be no longer than 500 words; refrain from extreme personal attacks; be signed and include an address and daytime telephone number. Writers should refrain from making incorrect statements since they may be barred from future issues. Deadline is noon Tuesday for Thursday's paper. To send us letters: Mail to PO BOX E14, Boston, MA 02127; E-mail: letters@southendnews.com

**Dr. Jefferson's professional journey has evolved from technical, consulting, and strategic planning roles to influential academic administration roles.**

## Legacy

Continued from page 1

Legacy Business awardees who uplift communities across our city. Congratulations to our 30 newly selected legacy businesses and we look forward to supporting you all in the years ahead!"

This year, the Mayor's Office of Economic Opportunity and Inclusion received 1,561 nominations. In total, community members nominated 276 qualified businesses. To be eligible, businesses need to be located in Boston and be in operation for at least 10 years.

The nominations were reviewed by the City Council, and selected by a committee that included representatives from City departments, and Boston Main Streets. Selections were based on application scoring and community support. The committee ensured that the list was representative of Boston by industry, neighborhood, gender, and race.

"I am proud to continue this hallmark initiative of Mayor Wu that invites residents across the city to honor the commitment, investment,

and impact that small business owners have made in our communities for decades," said Segun Idowu, Chief of Economic Opportunity and Inclusion. "Because of the work of our Small Business Team, this initiative continues to ensure the stability of these community bedrocks for generations to come."

The following neighborhood businesses were recognized:

- Anshur Restaurant, Roxbury
- Cornwall's, Fenway
- Frugal Bookstore, Roxbury
- House of Culture, South End

"Over the past 16 years, the Roxbury community has told us numerous times how appreciative they are to have a bookstore in their community. A bookstore that is an immediate reflection of who they are, and their experiences, dreams, and current ideas," said Leonard and Clarissa Egerton, owners of Frugal Bookstore. "It is beautiful to be recognized by the City of Boston, where we grew up. And to have the Legacy Business Award given to us is a further indication of our community's commitment to our longevity. We are deeply honored."

"We are thrilled to be recognized by the

City of Boston and the Roslindale Community as a Legacy Business," said Deb and Tony DeBenedictis, owners of Tony's Market. "After celebrating our 60th anniversary in business this year, we are so hopeful about the continued growth of our community and look forward to the support and visibility that comes with this award."

"This year's 30 Legacy Business winners represent businesses that are staples in our communities and part of Boston's rich history," said Aliesha Porcena, Director of Small Business. "This program is designed to provide continued support and services to the winners, and other small businesses throughout the city. I look forward to working with local partners to ensure these businesses continue to thrive."

On Tuesday, June 4 at 5:30pm, the Mayor's Office of Economic Opportunity and Inclusion will honor the businesses at an Awards Ceremony and Reception. Mayor Wu, elected officials, City of Boston staff, and members of the Boston community will be in attendance at this public event, taking place at the Calderwood Pavilion. Those interested can register for the event here.

## Service Guide Ads Get Results

For more information email sales@southendnews.com



JOIN THE DISTRICT 7

**VIRTUAL**

# TOWN HALL MEETING

Join us to discuss the state of Fenway • South End • Dorchester



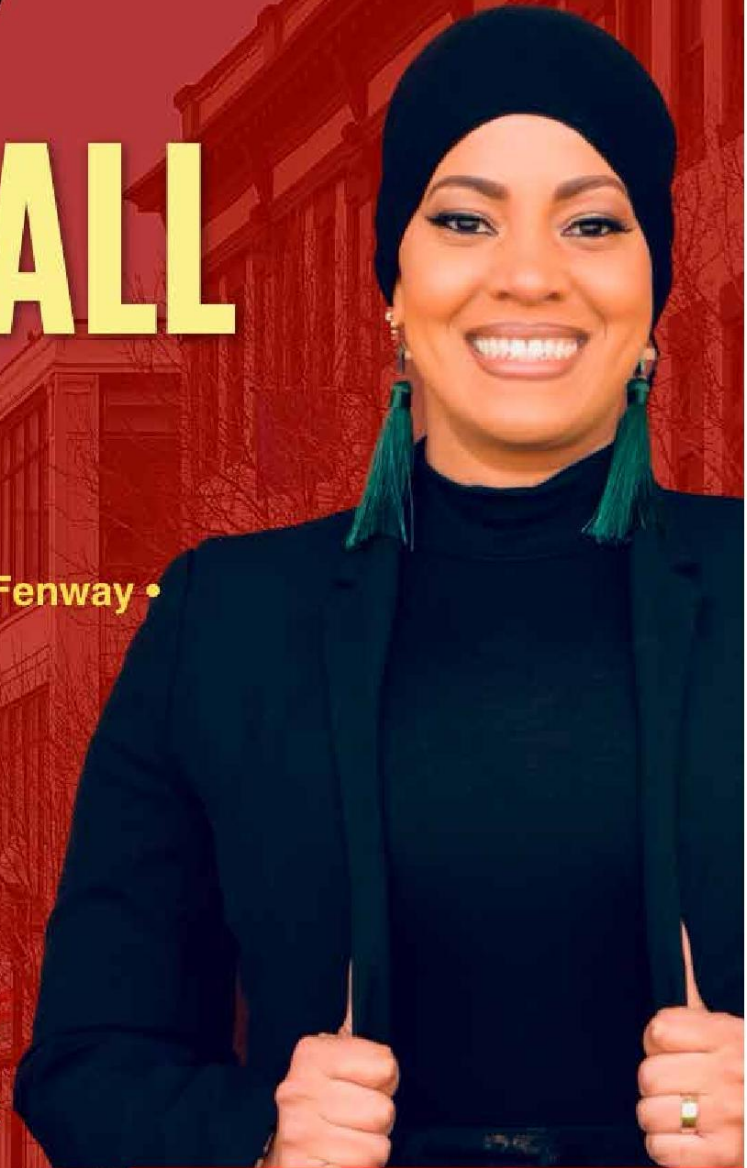
**SATURDAY**  
JUNE 8TH, 2024



11:00 AM - 1:00 PM



Zoom Link:  
<https://bit.ly/4b9GVUO>



In collaboration with: BOS 311



**Tania Fernandes Anderson**  
D7 City Councilor

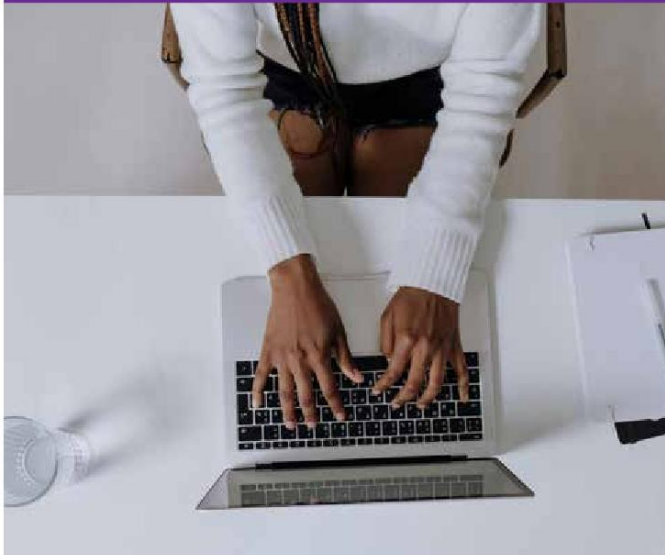
**FOLLOW US!**  
@SOUTHENDNEWS



LIKE  
SHARE  
FOLLOW



## THE SOUTH END NEWS WELCOMES LETTERS TO THE EDITOR



### LETTERS POLICY

- All letters must be signed and accompanied by a mailing address and phone number.
- Because of space limitations, letters should not be more than 200 words.

e-mail: [letters@southendnews.com](mailto:letters@southendnews.com)



### Residential / Commercial

*“When it comes to painting and carpentry, we’re the Angels you’ve been looking for.”*

**Cell: (781) 640-5590**

**Office: (508) 270-6841**

**[Tim@angelpainting.net](mailto:Tim@angelpainting.net)**

**[www.angelpaintinginc.com](http://www.angelpaintinginc.com)**

## Yellow Face

*Continued from page 1*

ceived negative reviews in its pre-Broadway tryout at the Colonial Theatre and closed after eight previews in New York. His insights and views really crystallized in his provocative 2007 play “Yellow Face” (a 2008 Obie Award winner). Now this timely work is resonating as much as ever in a riveting revival by the Lyric Stage Company of Boston.

Hwang has described “Yellow Face” as “a memoir—a kind of unreliable memoir.” On the one hand, he identifies here as DHH—his own initials—and chronicles his “Miss Saigon” protest and “Face Value” challenges. At the same time, he has DHH examine his evolving relationship with his Shanghai-born CPA father Henry Yuan Hwang—here called HYH—the actual founder of the Far East National Bank in California.

There is also important attention to anti-Asian-American bias in Congress in the 1990’s and outrageous unproven accusations (about arsenal secrets) against Taiwan-American nuclear scientist Wen Ho Lee—who was actually detained for many months.

As for the ‘unreliable’ elements, they turn out to be as pivotal as the ‘real’ ones. The key here is a Pirandellian character identified as Marcus G. Dahlman. DHH casts Dahlman as one of the leads in “Face Value.” Does Dahlman possess Eurasian ancestry? There is talk of his being a Jew with Siberian ancestry. There is even talk of one of the Jewish lost tribes ending up in Asia. Will DHH have to question his own consistency as an Asian-American as doubts about Dahlman’s ancestry grow?

Later—as Dahlman takes on Asian roles—

even the Thai ruler in “The King and I”—DHH will accuse him of being “an ethnic tourist.” Is Dahlman—whom DHH will call Marcus Gee—“just another actor running around in yellow face”? Very intriguingly, Pirandellian Marcus will later ask DHH to give him a happy denouement with an ascent to a pagoda in a Chinese village.

Under Ted Hewlett’s expert direction, DHH’s complex and multifaceted odyssey as an Asian-American, thoughtful son and serious writer and activist and the world Hwang depicts are vividly acted by six very talented actors. Michael Hisamoto captures DHH’s inner strength and principle as well as his self-doubts and vulnerability. Hisamoto’s exchanges with J.B. Barricklo as a proud HYH is moving and revealing. Alexander Holden (originally from Japan) is a standout as Dahlman—charismatic as the King of Siam, alternately concerning and amusing as a self-styled Asian-American spokesperson and enigmatic with DHH. Jupiter Li has fine tenacity as NEOSOC.

Jenny S. Lee and Mei MacQuarrie move smoothly through a variety of roles in Hwang’s fascinating memoir. Szu-Feng Chen keeps the title concern in the theatergoers’ minds with five rear side by side bulb-surrounded make-up stations. Megan Reilly’s projection design provides an effective complement to Hwang’s narrative—even including negative reviews of “Face Value” in the Boston Globe and Phoenix.

At a time when TikTok and AI have become as potentially insidious and dangerous as prejudice and stereotyping, “Yellow Face” has a lot to say about integrity and understanding. The very principled Lyric Stage Company of Boston revival is a must see staging as Hwang prepares for the Broadway premiere this fall of his important play.

## EdVestors

*Continued from page 1*

possible over 15 years. An enriching arts education is paramount, particularly in the aftermath of the pandemic, to help students re-engage with their peers and teachers, provide students with a sense of belonging, and to improve their social-emotional skill development, and overall well-being.”

The announcement of this year’s grants follows the recent annual BPS Citywide Arts Festival, which took place last week on the Boston Common and at the Bruce C. Bolling Municipal Building. The three-day event celebrated the importance of the arts in BPS and featured music, dance, and theater performances from nearly 1,000 students across the school district.

“For 15 years, BPS Arts Expansion has played a critical role in increasing equitable access to quality arts education for students across Boston,” said Marinell Rousmaniere, President & CEO of EdVestors. “The arts play an important role in the personal, academic,

and social-emotional development of young people. These grants will ensure that Boston continues to lead the way in arts instruction, together with the robust investment made by the Boston Public Schools for the year ahead. None of this is possible without the unwavering support of BPS leadership, the Mayor’s Office, and our dedicated funders and nonprofit partners.”

The positive impact of arts education goes beyond bringing out the creativity in students. Research has shown that arts education improves student engagement, including increasing attendance among chronically absent students. Students reported greater levels of belonging at school and engagement in learning when their school days included arts education.

BPS Arts Expansion brings together local foundations, the school district, arts organizations, higher education institutions, and the Mayor’s Office. Lead funders include the Barr Foundation, Catherine and Paul Buttenwieser Foundation, The Klarman Family Foundation, Linde Family Foundation, and the National Endowment for the Arts.

## BMC

*Continued from page 1*

\$3.4 million from the hospital last July, according to Suffolk County Registry of Deeds records. It was once home to the Naval Blood Research Laboratory, which focused on improving preservation and transportation of blood.

His \$4-million renovation proposal does not state whether the units will be rented as apartments or sold as condos. Four of the units will be rented or sold as affordable. Overall, the units will range from studios to three-bedroom units.

McCarthy hopes to begin a year of renovation and construction this fall.



# SERVICE GUIDE

## REMODELING

### Foxford Plastering & Remodeling LLC.

Paul Dempsey

Board Hanging + Veneer Plaster  
Demo + Water Damage Repair

All Types of Finishes

Renovations

Plaster Medallions

Plaster Moldings

HIC#196265

Call us today at (617) 224-8544



## MASONRY

### P. Stones CONTRACTING INC.

SPECIALIZING IN HISTORIC RESTORATION



Masonry • General Contracting

Roofing: Rubber, Shingle, Slate, Copper

Ornamental Windows: Sills, Headers, Moldings

Basement Floors • Caulking & Waterproofing

FULLY LICENSED AND INSURED | 30 YEARS OF SATISFIED CUSTOMERS AND REFERRALS

Office: 781-848-6922 | Fax: 781-848-6923

Cell: 617-592-0850 | pstonescontracting@hotmail.com

## ELECTRICAL



**D'S ELECTRIC**

PROVIDING QUALITY  
ELECTRICAL SERVICES  
to the BOSTON AREA

RESIDENTIAL & COMMERCIAL  
FREE ESTIMATES  
24 HOUR SERVICE

Dedicated to Customer Service since 1971

617.542.2000  
www.ds-electric.com

Mass License #14580A

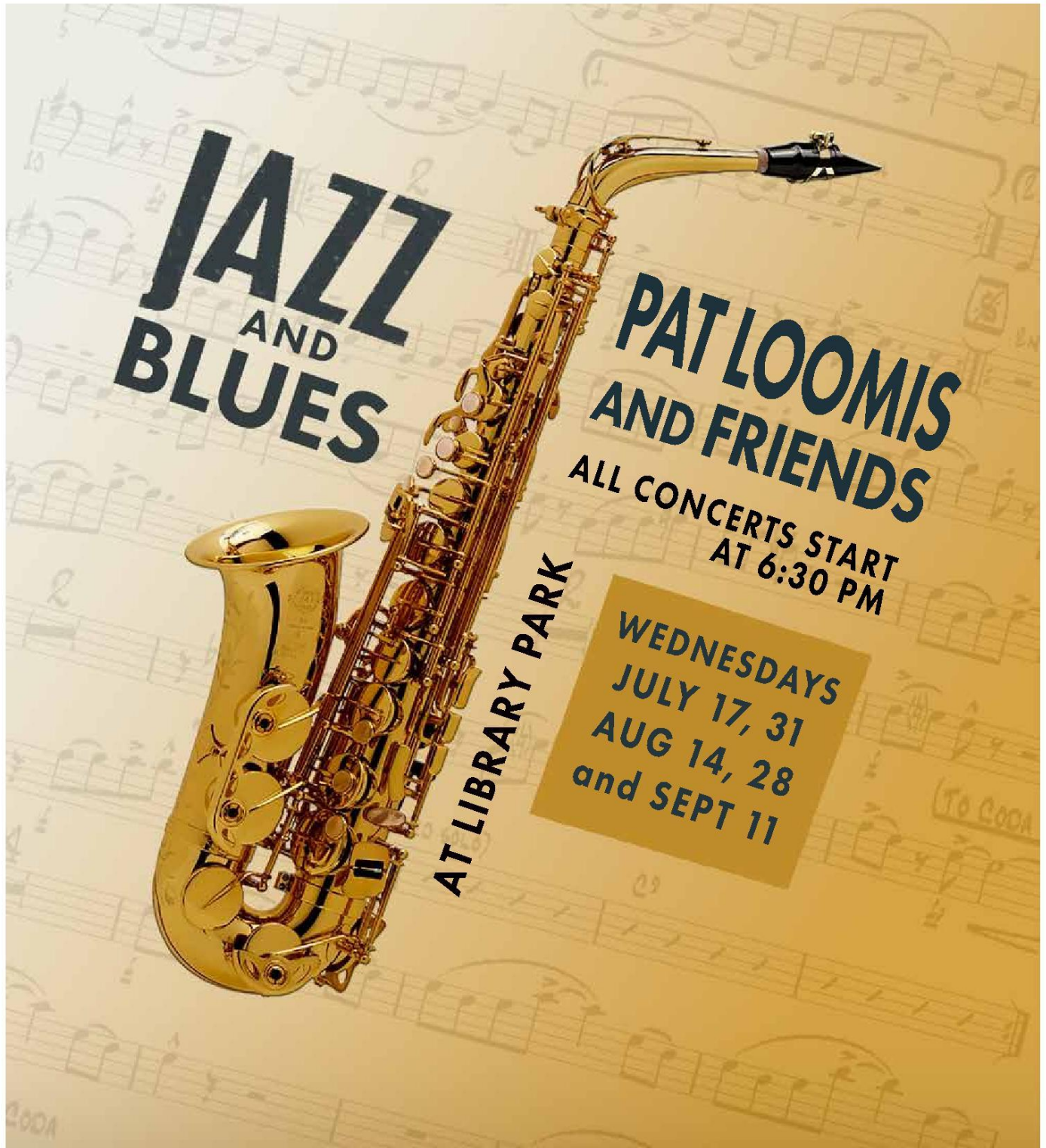
## WEDDINGS

o o o o o o o o o o custom wedding invitations o o o o o  
o o o o o o o o o o event invitations o o o o o  
o o o o o o o o o o wedding programs o o o o o  
o o o o o o o o o o wedding menus o o o o o o o o  
o o o o o o o o o o escort cards o o o o o o o o o o  
o o o o save - the - dates o o o o o o o o o o o o o o o



o o o o o lynn graham designs o o o o o  
www.lynngrahamdesigns.com • info@lynngrahamdesigns.com





# **JAZZ AND BLUES**

# **PAT LOOMIS AND FRIENDS**

**ALL CONCERTS START  
AT 6:30 PM**

**AT LIBRARY PARK**

**WEDNESDAYS  
JULY 17, 31  
AUG 14, 28  
and SEPT 11**



**FRIENDS OF THE  
SOUTH END  
LIBRARY**



**BOSTON  
PUBLIC  
LIBRARY**